

Public Information

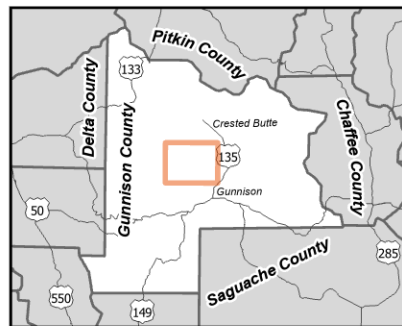
7/29/2023

798 acres at 7/28/2023
@ 1123

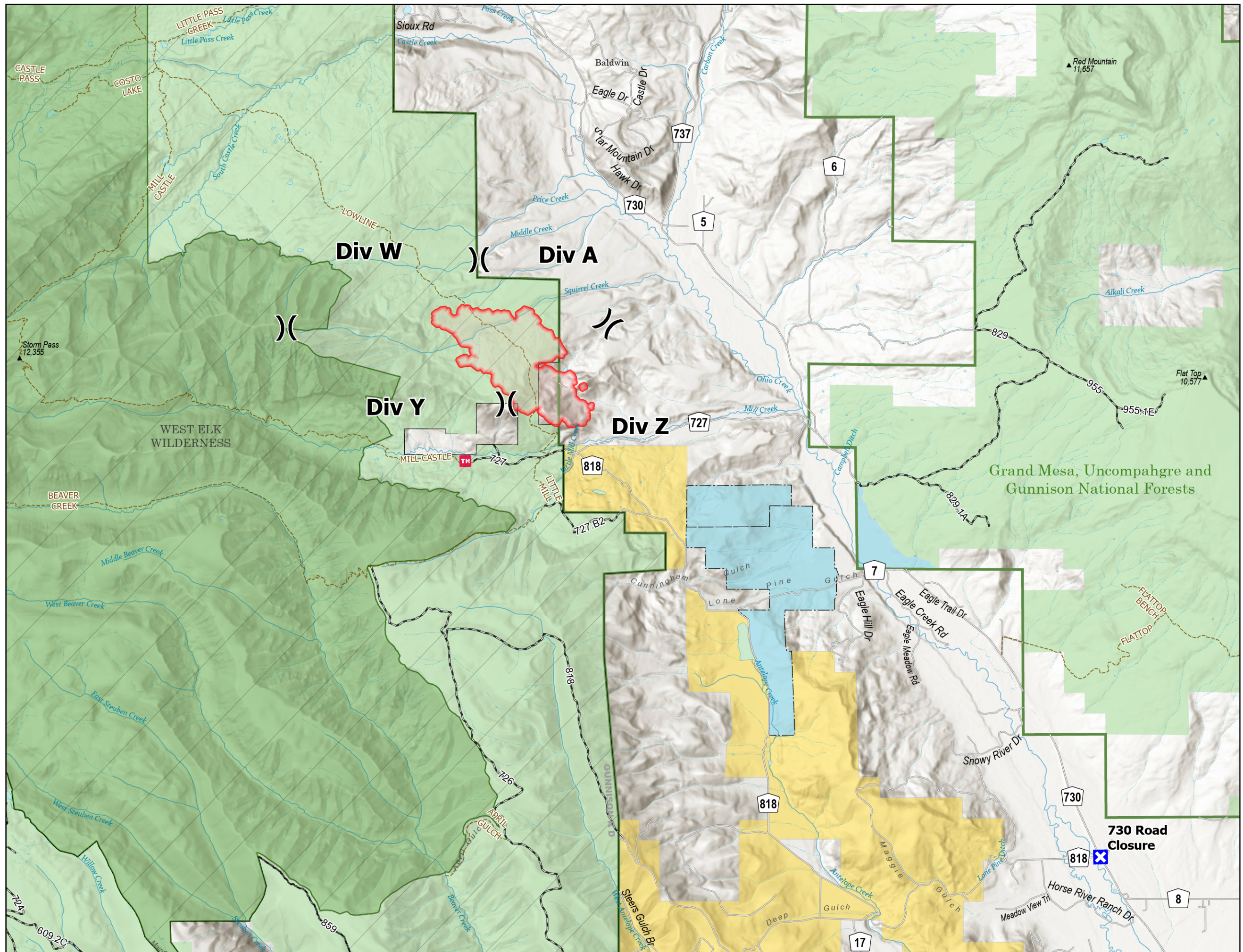


- Division Break
- Closure
- Wildfire Perimeter
- Forest Closure Area
- Recreation Site
- Trail
- Open Road
- County Road
- State Lands
- Bureau of Land Management Lands
- Forest Service Land
- FS Wilderness Boundary
- USFS Boundary

For more information about the Forest Closure scan



7/28/2023 2235
Acres from MMA
North American 1983 Datum.
Esri, NASA, NGA, USGS, FEMA



730 Road Closure

818

Horse River Ranch Dr

Meadow View Tr

17