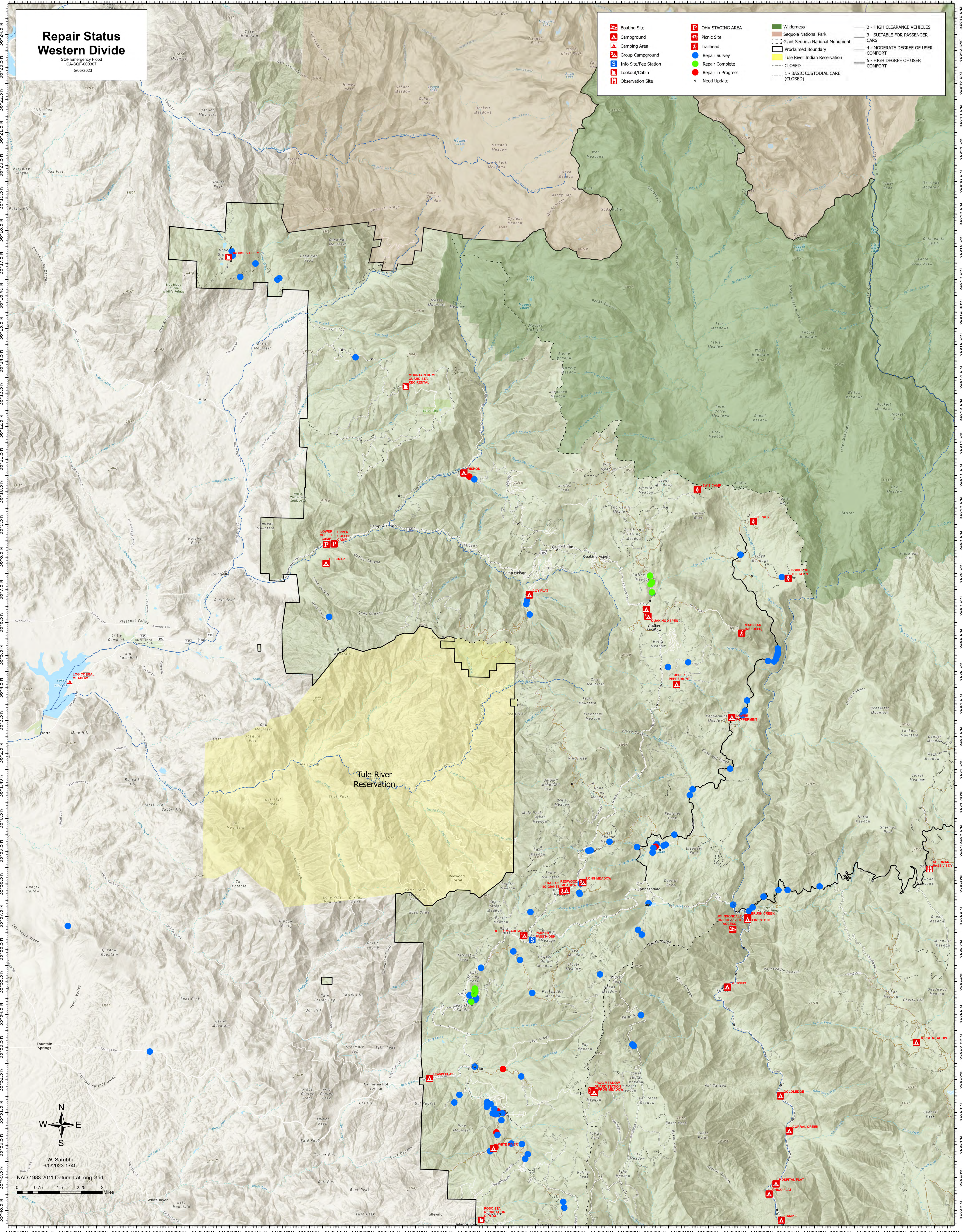


118°57'W 118°56'W 118°55'W 118°54'W 118°53'W 118°52'W 118°51.01'W 118°50'W 118°49'W 118°48'W 118°47'W 118°46'W 118°45'W 118°44'W 118°43'W 118°42'W 118°41'W 118°40'W 118°39'W 118°38'W 118°37'W 118°36.01'W 118°35'W 118°34'W 118°33'W 118°32'W 118°31'W 118°30'W 118°29'W 118°28'W 118°27'W 118°26'W 118°25'W 118°24'W 118°23'W 118°22'W

# Repair Status Western Divide

SQF Emergency Flood  
CA-SQF-000307  
6/05/2023

118°56'W 118°55'W 118°54'W 118°53'W 118°52'W 118°51.01'W 118°50'W 118°49'W 118°48'W 118°47'W 118°46'W 118°45'W 118°44'W 118°43'W 118°42'W 118°41'W 118°40'W 118°39'W 118°38'W 118°37'W 118°36.01'W 118°35'W 118°34'W 118°33'W 118°32'W 118°31'W 118°30'W 118°29'W 118°28'W 118°27'W 118°26'W 118°25'W 118°24'W 118°23'W 118°22'W



W. Sarubbi  
6/5/2023 1745

NAD 1983 2011 Datum: Lat/Long Grid  
0 0.75 1.5 2.25 3 Miles