



Smoke Outlook

Central Oregon - Cedar Creek Fire

10/14 - 10/15

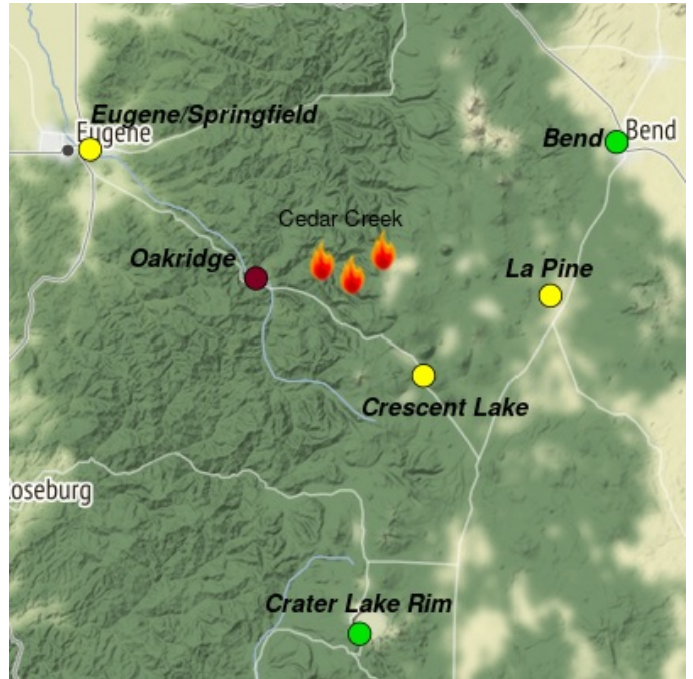
Issued by Wildland Fire Air Quality Response Program on October 14, 2022 at 08:14 AM PDT

Fire

Very warm and dry weather conditions continue over the region today. Elevated fire behavior potential remains as live and dead fuels are dry. The fire is most active in the southern and eastern region and will continue to produce smoky conditions. Unburned pockets of fuel continue to smolder and produce smoke within the fire perimeter. For size, containment, and detailed information about the fire, see <https://inciweb.nwcg.gov/incident/8307/>

Smoke

Air quality conditions due to smoke are expected to be Good to Hazardous within the forecast area. Continued Unhealthy to Hazardous conditions persist in Oakridge. Eugene will see Moderate air quality this morning with decreasing smoke this afternoon. Crescent Lake will have Good to Moderate air quality today. Continued regional haze and smoke is predicted for southern Oregon. Smoke impacts will be heavily dependent on fire activity.



Daily AQI Forecast* for Friday

Station	Yesterday hourly			Thu 10/13	Comment for Today -- Fri, Oct 14	Forecast*	
	6a	noon	6p			Fri 10/14	Sat 10/15
La Pine	[Bar chart showing AQI levels]			●	Expect Moderate to Good air quality for the day.	●	●
Crater Lake	[Bar chart showing AQI levels]			●	Expect Good air quality for the day.	●	●
Crescent Lake	No hourly data				Expect Moderate air quality for the day.	●	●
Bend	[Bar chart showing AQI levels]			●	Expect Good air quality for the day.	●	●
Oakridge	[Bar chart showing AQI levels]			●	Unhealthy to hazardous air quality with slight improvement in the evening.	●	●
Eugene/Springfield	[Bar chart showing AQI levels]			●	Expect overall Moderate air quality.	●	●

Issued Oct 14, 2022 by Beth Anderson, beth.a.anderson@usda.gov

Air Quality Index (AQI)	Actions to Protect Yourself
● Good	None
● Moderate	Unusually sensitive individuals should consider limiting prolonged or heavy exertion.
● USG	People within Sensitive Groups* should reduce prolonged or heavy outdoor exertion.
● Unhealthy	People within Sensitive Groups* should avoid all physical outdoor activity.
● Very Unhealthy	Everyone should avoid prolonged or heavy exertion.
● Hazardous	Everyone should avoid any outdoor activity.

***Disclaimer:** This forecast is based on fine particulates only; ozone is not included. Forecasts may be wrong; use at own risk. Use caution as conditions can change quickly. See your health professional as needed. Smoke sensitive groups should take appropriate precautions.

Additional Links

[Oakridge Air](https://oakridgeair.org/) -- <https://oakridgeair.org/>

[AirNow Fire and Smoke Map](https://fire.airnow.gov/#) -- <https://fire.airnow.gov/#>

[Lane Regional Air Protection Agency](https://www.lrapa.org/) -- <https://www.lrapa.org/>

by Interagency Wildland Fire Air Quality Response Program -- www.wildlandfiresmoke.net

Central Oregon Updates -- <https://outlooks.wildlandfiresmoke.net/outlook/7f95b6c6>

*Smoke and Health Info -- www.airnow.gov/air-quality-and-health

