



Smoke Outlook

Central Oregon - Cedar Creek Fire

10/13 - 10/14

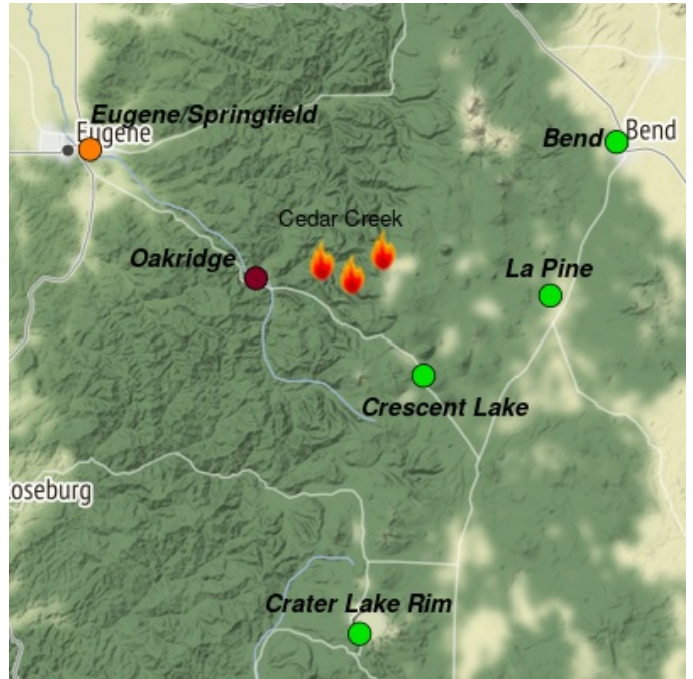
Issued by Wildland Fire Air Quality Response Program on October 13, 2022 at 08:12 AM PDT

Fire

High pressure will sit over the region through the coming weekend maintaining warm and dry weather. Elevated fire behavior potential remains as live and dead fuels are dry. The fire is most active in the southern and eastern region and will continue to produce smoky conditions. Unburned pockets of fuel continue to smolder and produce smoke within the fire perimeter. For size, containment, and detailed information about the fire, see <https://inciweb.nwac.gov/incident/8307/>

Smoke

Air quality conditions due to smoke are expected to be Good to Hazardous within the forecast area. Continued Unhealthy to Hazardous conditions persist in Oakridge. Eugene will see Moderate to Unhealthy for Sensitive Groups air quality this morning with decreasing smoke this afternoon but increasing overnight. Crescent Lake will have Good air quality this morning with increasing smoky conditions this afternoon and decreasing overnight. Continued regional haze and smoke is predicted for southern Oregon. Smoke impacts will be heavily dependent on fire activity.



Daily AQI Forecast* for Thursday

Station	Yesterday	Wed 10/12	Comment for Today -- Thu, Oct 13	Forecast*	
	hourly			Thu 10/13	Fri 10/14
Oakridge			Unhealthy to hazardous air quality with slight improvement in the evening.		
La Pine			Expect Good air quality for the day.		
Eugene/Springfield			Expect overall Moderate to Unhealthy for Sensitive Groups air quality.		
Crater Lake			Expect Good air quality for the day.		
Crescent Lake	No hourly data		Expect Good air quality for the day.		
Bend			Expect Good air quality for the day.		

Issued Oct 13, 2022 by Beth Anderson, beth.a.anderson@usda.gov

Air Quality Index (AQI)	Actions to Protect Yourself
Good	None
Moderate	Unusually sensitive individuals should consider limiting prolonged or heavy exertion.
USG	People within Sensitive Groups* should reduce prolonged or heavy outdoor exertion.
Unhealthy	People within Sensitive Groups* should avoid all physical outdoor activity.
Very Unhealthy	Everyone should avoid prolonged or heavy exertion.
Hazardous	Everyone should avoid any outdoor activity.

***Disclaimer:** This forecast is based on fine particulates only; ozone is not included. Forecasts may be wrong; use at own risk. Use caution as conditions can change quickly. See your health professional as needed. Smoke sensitive groups should take appropriate precautions.

Additional Links

[Oakridge Air](https://oakridgeair.org/) -- <https://oakridgeair.org/>

[AirNow Fire and Smoke Map](https://fire.airnow.gov/#) -- <https://fire.airnow.gov/#>

[Lane Regional Air Protection Agency](https://www.lrapa.org/) -- <https://www.lrapa.org/>

--

by Interagency Wildland Fire Air Quality Response Program -- www.wildlandfiresmoke.net

Central Oregon Updates -- <https://outlooks.wildlandfiresmoke.net/outlook/7f95b6c6>

*Smoke and Health Info -- www.airnow.gov/air-quality-and-health