



Smoke Outlook

Central Oregon - Cedar Creek Fire

10/12 - 10/13

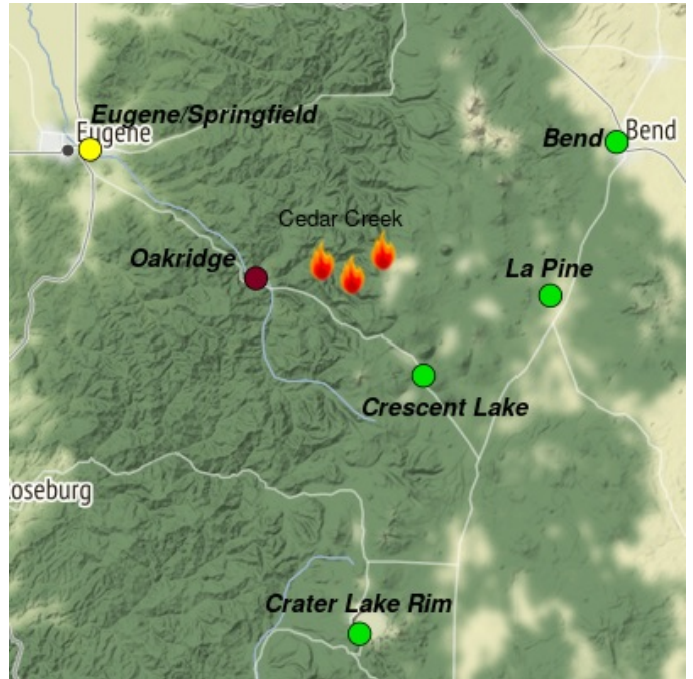
Issued by Wildland Fire Air Quality Response Program on October 12, 2022 at 08:47 AM PDT

Fire

High pressure continues resulting in a continued warming and drying trend over the fire area. Elevated fire behavior potential remains as live and dead fuels are dry. The fire is most active in the southern region along highway 58 and will continue to produce smoky conditions. Unburned pockets of fuel continue to smolder and produce smoke within the fire perimeter. For size, containment, and detailed information about the fire, see <https://inciweb.nwcg.gov/incident/8307/>

Smoke

Air quality conditions due to smoke are expected to be Good to Hazardous within the forecast area. Continued Unhealthy to Hazardous conditions persist in Oakridge. Much improved air quality conditions from Good to Moderate are predicted today for Bend, La Pine, Crescent Lake and Crater Lake. Increasing smoke is predicted this afternoon to evening for Eugene. Continued regional haze and smoke is predicted for southern Oregon. Smoke impacts will be heavily dependent on fire activity.



Daily AQI Forecast* for Wednesday

Station	Yesterday hourly			Tue 10/11	Comment for Today -- Wed, Oct 12	Forecast*	
	6a	noon	6p			Wed 10/12	Thu 10/13
Bend					Expect Good air quality for the day.		
Crater Lake					Expect Good air quality.		
La Pine					Expect Good air quality for the day.		
Oakridge					Unhealthy to hazardous AQ today with possible improvement overnight.		
Crescent Lake	No hourly data				Expect Good air quality today.		
Eugene/Springfield					Expect overall Moderate air quality.		

Issued Oct 12, 2022 by Beth Anderson, beth.a.anderson@usda.gov

Air Quality Index (AQI)	Actions to Protect Yourself
Good	None
Moderate	Unusually sensitive individuals should consider limiting prolonged or heavy exertion.
USG	People within Sensitive Groups* should reduce prolonged or heavy outdoor exertion.
Unhealthy	People within Sensitive Groups* should avoid all physical outdoor activity.
Very Unhealthy	Everyone should avoid prolonged or heavy exertion.
Hazardous	Everyone should avoid any outdoor activity.

***Disclaimer:** This forecast is based on fine particulates only; ozone is not included. Forecasts may be wrong; use at own risk. Use caution as conditions can change quickly. See your health professional as needed. Smoke sensitive groups should take appropriate precautions.

Additional Links

[Oakridge Air](https://oakridgeair.org/) -- <https://oakridgeair.org/>

[AirNow Fire and Smoke Map](https://fire.airnow.gov/#) -- <https://fire.airnow.gov/#>

[Lane Regional Air Protection Agency](https://www.lrapa.org/) -- <https://www.lrapa.org/>

by Interagency Wildland Fire Air Quality Response Program -- www.wildlandfiresmoke.net

Central Oregon Updates -- <https://outlooks.wildlandfiresmoke.net/outlook/7f95b6c6>

*Smoke and Health Info -- www.airnow.gov/air-quality-and-health

