



# Smoke Outlook

## Central Oregon - Cedar Creek Fire

10/06 - 10/07

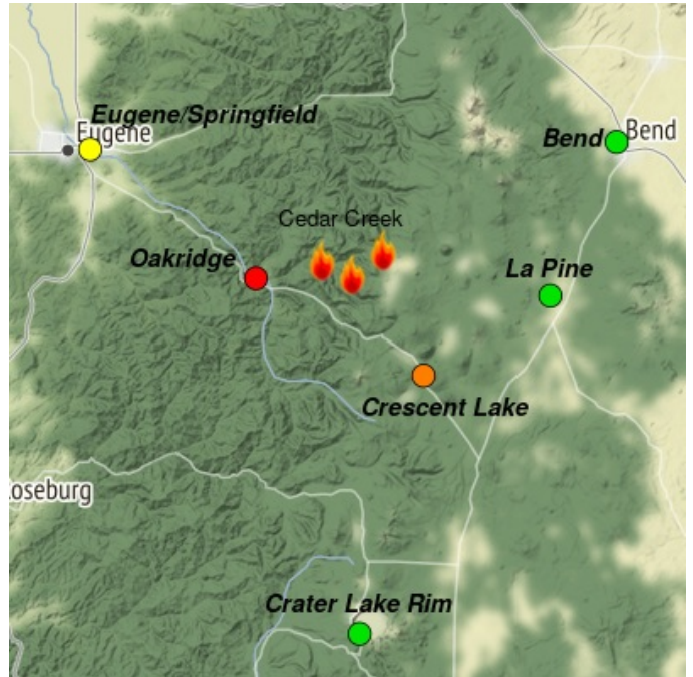
Issued by Wildland Fire Air Quality Response Program on October 06, 2022 at 07:54 AM PDT

### Fire

The weather continues to be warm and dry with breezy east winds today. The fire is most active in the southwest area near Oakridge. Unburned pockets of fuel continue to smolder and produce smoke within the fire perimeter. For size, containment, and detailed information about the fire, see <https://inciweb.nwcg.gov/incident/8307/>

### Smoke

Air quality conditions due to smoke are expected to be Good to Hazardous within the forecast area. Continued Unhealthy to Hazardous conditions persist in Oakridge with possible improved air quality in the late afternoon to early evening. Air quality may change unexpectedly. Smoke impacts will be heavily dependent on fire activity.



Daily AQI Forecast\* for Thursday

Station	Yesterday hourly			Wed 10/05	Comment for Today -- Thu, Oct 06	Forecast*	
	6a	noon	6p			Thu 10/06	Fri 10/07
La Pine					Expect Good air quality for the day with possible smoke overnight.		
Bend					Expect Good air quality for the day with possible smoke overnight.		
Crater Lake					Expect Good air quality for the day with possible smoke overnight.		
Crescent Lake	No hourly data				Expect Unhealthy for Sensitive Groups with possible clearing in the afternoon.		
Eugene/Springfield					Expect overall Moderate air quality.		
Oakridge					Unhealthy to hazardous AQ today with possible improvement in the late afternoon.		

Issued Oct 06, 2022 by Ariane Sarzotti, ARA, [ariane\\_sarzotti@nps.gov](mailto:ariane_sarzotti@nps.gov) and Beth Anderson, [beth.a.anderson@usda.gov](mailto:beth.a.anderson@usda.gov)

Air Quality Index (AQI)	Actions to Protect Yourself
Good	None
Moderate	Unusually sensitive individuals should consider limiting prolonged or heavy exertion.
USG	People within Sensitive Groups* should <b>reduce</b> prolonged or heavy outdoor exertion.
Unhealthy	People within Sensitive Groups* should <b>avoid all</b> physical outdoor activity.
Very Unhealthy	Everyone should avoid prolonged or heavy exertion.
Hazardous	Everyone should avoid any outdoor activity.

\***Disclaimer:** This forecast is based on fine particulates only; ozone is not included. Forecasts may be wrong; use at own risk. Use caution as conditions can change quickly. See your health professional as needed. Smoke sensitive groups should take appropriate precautions.

### Additional Links

[Oakridge Air](https://oakridgeair.org/) -- <https://oakridgeair.org/>

[AirNow Fire and Smoke Map](https://fire.airnow.gov/#) -- <https://fire.airnow.gov/#>

[Lane Regional Air Protection Agency](https://www.lrapa.org/) -- <https://www.lrapa.org/>

--



by Interagency Wildland Fire Air Quality Response Program -- [www.wildlandfiresmoke.net](http://www.wildlandfiresmoke.net)

Central Oregon Updates -- <https://outlooks.wildlandfiresmoke.net/outlook/7f95b6c6>

\*Smoke and Health Info -- [www.airnow.gov/air-quality-and-health](http://www.airnow.gov/air-quality-and-health)