



Smoke Outlook

Central Oregon - Cedar Creek Fire

10/05 - 10/06

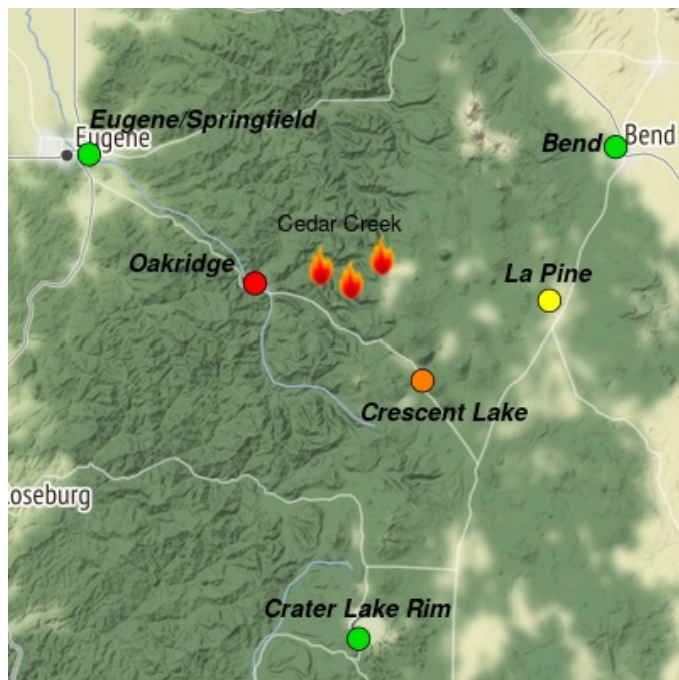
Issued by Wildland Fire Air Quality Response Program on October 05, 2022 at 08:11 AM PDT

Fire

The weather continues to be warm and dry with light winds for the forecasted area. The most active fire activity is the southwest area of the fire. Unburned pockets of fuel continue to smolder and produce smoke within the fire perimeter. For size, containment, and detailed information about the fire, see <https://inciweb.nwcg.gov/incident/8307/>

Smoke

Air quality conditions due to smoke are expected to be Good to Hazardous within the forecast area. Continued Unhealthy to Hazardous conditions persist in Oakridge during the night to early morning with slight air quality improvement in the afternoon. Air quality may change unexpectedly. Smoke impacts will be heavily dependent on fire activity.



Daily AQI Forecast* for Wednesday

Station	Yesterday hourly			Tue 10/04	Comment for Today -- Wed, Oct 05	Forecast*	
	6a	noon	6p			Wed 10/05	Thu 10/06
Eugene/Springfield					Expect overall Good air quality with possible smoke in the afternoon.		
Crescent Lake	No hourly data				Expect Unhealthy for Sensitive Groups with possible clearing in the afternoon.		
La Pine					Expect overall Moderate AQ with possible clearing in the afternoon.		
Oakridge					Unhealthy to hazardous AQ in the morning, possible better AQ in the afternoon.		
Crater Lake					Expect overall Good air quality with possible smoke increasing overnight.		
Bend					Expect improving air quality for the day with possible smoke returning tonight		

Issued Oct 05, 2022 by Ariane Sarzotti, ARA, ariane_sarzotti@nps.gov and Beth Anderson, beth.a.anderson@usda.gov

Air Quality Index (AQI)	Actions to Protect Yourself
Good	None
Moderate	Unusually sensitive individuals should consider limiting prolonged or heavy exertion.
USG	People within Sensitive Groups* should reduce prolonged or heavy outdoor exertion.
Unhealthy	People within Sensitive Groups* should avoid all physical outdoor activity.
Very Unhealthy	Everyone should avoid prolonged or heavy exertion.
Hazardous	Everyone should avoid any outdoor activity.

***Disclaimer:** This forecast is based on fine particulates only; ozone is not included. Forecasts may be wrong; use at own risk. Use caution as conditions can change quickly. See your health professional as needed. Smoke sensitive groups should take appropriate precautions.

Additional Links

[Oakridge Air](https://oakridgeair.org/) -- <https://oakridgeair.org/>

[AirNow Fire and Smoke Map](https://fire.airnow.gov/#) -- <https://fire.airnow.gov/#>

[Lane Regional Air Protection Agency](https://www.lrapa.org/) -- <https://www.lrapa.org/>

--

by Interagency Wildland Fire Air Quality Response Program -- www.wildlandfiresmoke.net

Central Oregon Updates -- <https://outlooks.wildlandfiresmoke.net/outlook/7f95b6c6>

*Smoke and Health Info -- www.airnow.gov/air-quality-and-health