



Smoke Outlook

Central Oregon - Cedar Creek Fire

10/04 - 10/05

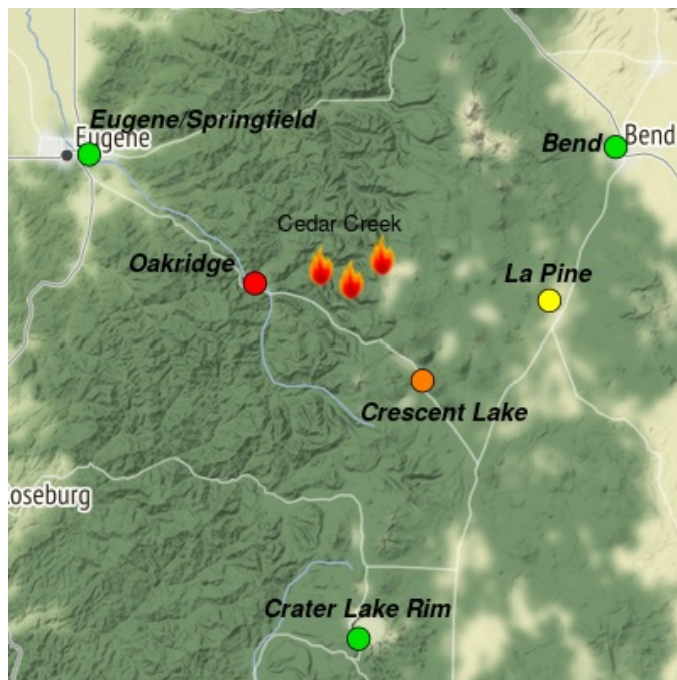
Issued by Wildland Fire Air Quality Response Program on October 04, 2022 at 08:29 AM PDT

Fire

The weather continues to be warm and dry with low humidity and light winds may result in elevated burning conditions. The most active portion can be observed in the southwest section of the fire. Unburned pockets of fuel continue to smolder and produce smoke within the fire perimeter. For size, containment, and detailed information about the fire, see <https://inciweb.nwacg.gov/incident/8307/>

Smoke

Smoke conditions today are expected to be Good to Unhealthy in the forecast area. Predicted after noon light northwest winds have the potential to bring smoke into Crescent Lake and La Pine communities this evening to overnight. Due to the varied geography within Oakridge, Unhealthy to Hazardous air quality conditions may persist with slight improvement in the afternoon due to light winds. Air quality may change unexpectedly. Smoke impacts will be heavily dependent on fire activity.



Daily AQI Forecast* for Tuesday

Station	Yesterday hourly		Mon 10/03	Comment for Today -- Tue, Oct 04	Forecast*	
	6a	noon 6p			Tue 10/04	Wed 10/05
Crescent Lake	No hourly data			Expect Unhealthy for Sensitive Groups with possible clearing in the afternoon.		
Oakridge				Unhealthy to hazardous AQ in the morning, possible better AQ in the afternoon.		
Eugene/Springfield				Expect overall Good air quality with possible smoke in the afternoon.		
La Pine				Expect overall Moderate air quality with possible clearing in the afternoon.		
Crater Lake				Expect overall Good air quality with possible smoke increasing overnight.		
Bend				Expect overall Good air quality for the day with possible smoke in the morning.		

Issued Oct 04, 2022 by Ariane Sarzotti, ARA, ariane_sarzotti@nps.gov and Beth Anderson, beth.a.anderson@usda.gov

Air Quality Index (AQI)	Actions to Protect Yourself
Good	None
Moderate	Unusually sensitive individuals should consider limiting prolonged or heavy exertion.
USG	People within Sensitive Groups* should reduce prolonged or heavy outdoor exertion.
Unhealthy	People within Sensitive Groups* should avoid all physical outdoor activity.
Very Unhealthy	Everyone should avoid prolonged or heavy exertion.
Hazardous	Everyone should avoid any outdoor activity.

***Disclaimer:** This forecast is based on fine particulates only; ozone is not included. Forecasts may be wrong; use at own risk. Use caution as conditions can change quickly. See your health professional as needed. Smoke sensitive groups should take appropriate precautions.

Additional Links

[Oakridge Air](https://oakridgeair.org/) -- <https://oakridgeair.org/>

[AirNow Fire and Smoke Map](https://fire.airnow.gov/#) -- <https://fire.airnow.gov/#>

[Lane Regional Air Protection Agency](https://www.lrapa.org/) -- <https://www.lrapa.org/>

--

by Interagency Wildland Fire Air Quality Response Program -- www.wildlandfiresmoke.net

Central Oregon Updates -- <https://outlooks.wildlandfiresmoke.net/outlook/7f95b6c6>

*Smoke and Health Info -- www.airnow.gov/air-quality-and-health

