

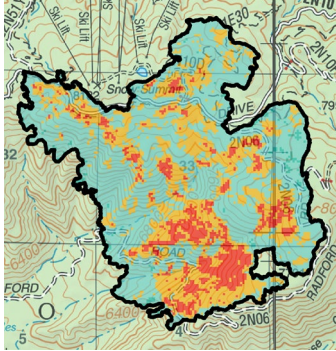
# San Bernardino National Forest Burned Area Emergency Response (BAER) Post-Fire BAER Assessment



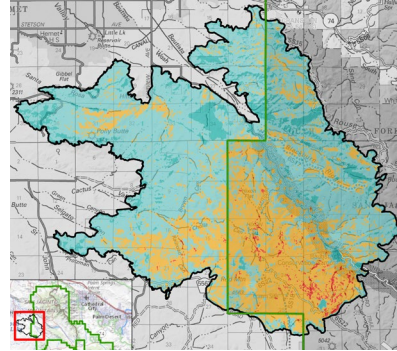
September 26, 2022

BAER Information: (707) 853-4243

## POST-FIRE BAER SOIL BURN SEVERITY MAPS RELEASED



Radford Post-Fire Soil Burn Severity Map



Fairview Post-Fire Soil Burn Severity Map

Forest Service BAER team specialists recently completed their field data gathering on federal lands burned by the Radford and Fairview fires. The post-fire maps and data display soil burn severity (SBS) categories of unburned/very low, low, moderate, and high.

For the Radford Fire, the BAER team analyzed approximately 1,076 acres and its burned watersheds for the different levels of SBS. Approximately 60% of the total acres are either unburned/very low or low SBS, while 29% are moderate SBS and 11% are high SBS.

The BAER team's Radford post-fire assessment shows the land ownership acreage to be:

- 1,076 acres of San Bernardino National Forest (NF) land.

For the Fairview Fire, the BAER team analyzed approximately 28,777 acres and its burned watersheds for the different levels of SBS. Approximately 68% of the total acres are either unburned/very low or low SBS, while 31% are moderate SBS and only 1% are high SBS.

The BAER team's Fairview post-fire assessment shows the land ownership acreage for land ownership to be:

- 13,571 acres of San Bernardino National Forest (NF) land,
- 11,897 acres of private lands,
- 3,056 of Bureau of Land Management (BLM) land, and
- 253 acres of CA State lands.

The BAER assessment team used preliminary remote sensing data based on satellite imagery within the fire perimeter with field-validated data collected over several days to produce the final Radford and Fairview Post-Fire SBS maps.

The BAER assessment team coordinates with other local and federal agencies such as county and state officials, the Bureau of Land Management (BLM), California Office of Emergency Services (CALOES), Natural Resources Conservation Service (NRCS), National Weather Service (NWS), US Geological Survey (USGS), and Tribes to share information about burned watershed conditions and their predicted response during certain weather events.

The SBS map products are an estimate of fire effects on soils and not a measure of direct effects to vegetation. SBS characterizes the soil surface and below-ground impact, whereas effects on vegetation are estimates of mortality based primarily on changes in vegetation canopy. Another post-fire map that is sometimes produced by fire managers, is the Rapid Assessment of Vegetation Condition after Wildfire (RAVG) map. That mapping program produces data describing post-fire vegetation conditions on federal lands. Changes in overhead and understory vegetation canopy are often used as initial indicators of overall vegetation burn severity, but do not necessarily coincide with SBS.

Changes in soil cover, water repellency, and soil physical/biological conditions guide the interpretations to determine the severity burn level of the soil. Water repellency can occur naturally in soil and may change because of fire. Fire can increase the strength and thickness (or depth) of water-repellent layers in soil, considerably affecting post-fire water runoff and possibly extending time for recovery of the burned area.

Soil burn severity indicators can be found within the Rocky Mountain Research Station's *General Technical Report 243 – Field Guide for Mapping Post-Fire Soil Burn Severity* [https://www.fs.usda.gov/rm/pubs/rmrs\\_gtr243.pdf](https://www.fs.usda.gov/rm/pubs/rmrs_gtr243.pdf) and are described below.

Low SBS generally occurs where surface organic layers are not completely consumed and are still recognizable. Structural aggregate stability is not changed from its unburned condition, and roots are generally unchanged because the heat pulse below the soil surface was not great enough to consume or char any underlying organics. The ground surface, including any exposed mineral soil, may appear brown or black (lightly charred), and the canopy and understory vegetation will likely appear “green.” Lower risk for accelerated runoff, erosion, flooding, and debris flows is expected within and below these areas compared to moderate and high SBS.

In areas with moderate SBS, up to 80% of the pre-fire ground cover (litter and ground fuels) is consumed. Fine roots may be scorched but are rarely completely consumed over much of the area. The color of the ash on the surface is generally blackened with possible gray patches. There may be potential for recruitment of effective ground cover from scorched needles or leaves remaining in the canopy that will soon fall to the ground. The prevailing color of the site is often “brown” due to canopy needle and other vegetation scorch. Soil structure is generally unchanged. Where greater amounts of reduced soil cover and increased water repellency occur, increased overland flow of water from precipitation is expected, most notably in locations where the overstory canopy no longer exists.

High SBS occurs where all or nearly all the pre-fire ground cover and surface organic matter (litter, duff, and fine roots) are consumed, and charring may be visible on larger roots. The prevailing color of the site is often “black” due to extensive charring. Bare soil or ash is exposed and susceptible to erosion, and aggregate structure may be less stable. White or gray ash (up to several centimeters in depth) indicates that considerable ground cover or fuels were consumed. Sometimes very large tree roots are entirely burned extending from a charred stump hole. Soil is often gray, orange, or reddish at the ground surface where large fuels were concentrated and consumed.

Generally, there is 100% conifer tree mortality in forested areas with high SBS, and tree recovery will take many years without planting. In high SBS, the exposed bare soil is very prone to post-fire impacts. Precipitation events on damaged soil can cause excessive soil erosion, resulting in higher volumes of sediment delivery to adjacent creeks and rivers. There is increased likelihood for flooding and debris flows. These threats can individually or cumulatively increase the risk to human life and safety, property, infrastructure, and important critical natural and cultural resources.

The BAER team used Radford and Fairview SBS data to analyze and model post-fire hydrologic response for each of the burned area watersheds to determine if there are threats or risks to BAER critical values: human life and safety, property, critical natural resources, and critical cultural resources. The team shares its analysis with cooperating agencies such as CalOES, NRCS, and San Bernardino and Riverside counties who have the authority to work with private property owners downstream from the burned area that potentially may have post-fire threats from increased water and debris flows. The BAER team's analysis and findings will be documented in an assessment report that will be posted to the Radford and Fairview Post-Fire BAER InciWeb pages after the report has been reviewed and approved by Forest Service leadership. The BAER team plans to summarize and share the watershed response results for both wildfires prior to releasing the entire assessment report.

Both SBS maps can be downloaded at the two Post-Fire BAER InciWeb sites (<https://inciweb.nwcg.gov/incident/8425/> and <https://inciweb.nwcg.gov/incident/8426/>) as a JPEG or PDF format image under the “Maps” tab.

For additional information about understanding SBS, see: [Post-Fire Effects--Understanding Soil Burn Severity - InciWeb the Incident Information System \(nwcg.gov\)](#).

**BAER SAFETY MESSAGE:** *Everyone near and downstream from the burned areas should remain alert and stay updated on weather conditions that may result in heavy rains and increased water runoff. Flash flooding may occur quickly during heavy rain events – be prepared to act. Current weather and emergency notifications can be found at the **National Weather Service** website: [www.weather.gov/sqx/](http://www.weather.gov/sqx/).*

**Radford Post-Fire BAER Assessment information is available at: <https://inciweb.nwcg.gov/incident/8425/>**  
**Fairview Post-Fire BAER Assessment information is available at: <https://inciweb.nwcg.gov/incident/8426/>**

