

R. 14 E.

R. 15 E.

R. 16 E.

T. 29 N.

T. 28 N.

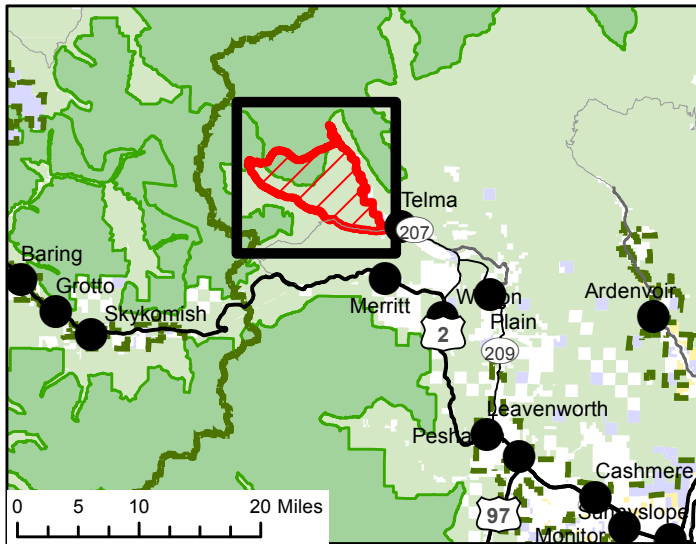
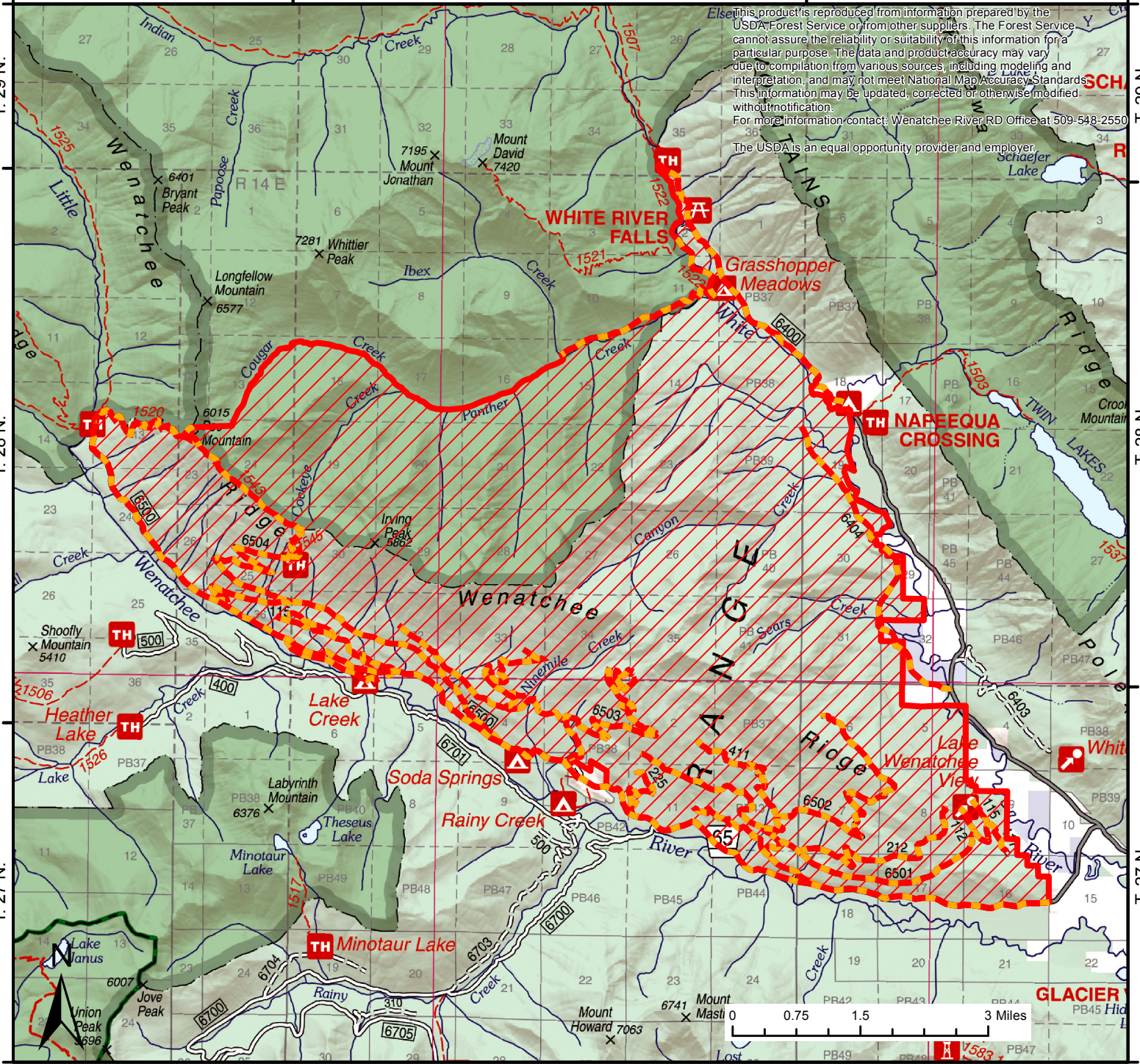
T. 27 N.

T. 29 N.

T. 28 N.

T. 27 N.

This product is reproduced from information prepared by the USDA Forest Service or from other suppliers. The Forest Service cannot assure the reliability or suitability of this information for a particular purpose. The data and product accuracy may vary due to compilation from various sources, including modeling and interpretation, and may not meet National Map Accuracy Standards. This information may be updated, corrected or otherwise modified without notification. For more information contact: Wenatchee River RD Office at 509-548-2550. The USDA is an equal opportunity provider and employer.



White River Forest Closure Exhibit A
Closure Number 06-17-07-22-13
Okanogan-Wenatchee National Forest
Wenatchee River RD at 509-548-2550
 Legend

- Road/Trail Closure
- Area Closure
- USFS Admin Boundary
- National Forest Land
- Wilderness
- Bureau of Land Management
- Bureau of Indian Affairs
- National Park Service
- Other Federal Land
- State Land
- Other Land, Including Private

Date: 8/31/2022

