



Forest Order No. 03-22-17
Eldorado National Forest
Pacific Southwest Region
Mosquito Fire Area, Road, and Trail Closure

Pursuant to 16 U.S.C. § 551 and 36 C.F.R. § 261.50(a) and (b), and to provide for public safety, the following acts are prohibited within the Eldorado National Forest. This Order is effective from September 22, at 12:00 pm, through December 31, 2022.

1. Going into or being upon National Forest System lands within the Mosquito Fire Closure Area, as described below and shown on Exhibit A. 36 C.F.R. § 261.52(e).

The Mosquito Fire Closure Area boundary begins at the northwest corner of the Eldorado National Forest (ENF), where it departs from the Middle Fork of the American River, where it continues approximately 6.6 miles along the ENF boundary generally south and east to its intersection, east of Little Bald Mountain, with Forest Service Road (FSR) 13N58 (Bottle Hill Road), and continues approximately 3.4 miles along FSR 13N58 generally southeast to its intersection with Wentworth Springs Road (El Dorado County Road 63), then continues approximately 9.9 miles along Wentworth Springs Road generally southeast to its intersection with the ENF ownership line with private inholdings on the western edge of Stumpy Meadows Reservoir, then continues approximately 5.6 miles along the ENF ownership line and private inholdings generally east to its intersection with Wentworth Springs Road, then continues approximately 5.4 miles along Wentworth Springs Road generally northeast to its intersection with the ENF Georgetown Ranger District (ENF GRD) boundary and Pacific Ranger District (ENF PRD) boundary, then continues approximately 14.2 miles along the ENF GRD and ENF PRD boundaries generally northeast to its intersection with the ENF and Tahoe National Forest (TNF) boundaries east of Hell Hole Reservoir, then continues approximately 9.2 miles along the ENF and TNF boundaries generally north and west to its intersection with the Middle Fork of the American River, then continues approximately 34 miles along the Middle Fork of the American River generally southwest to the starting point at its intersection with the ENF boundary where it departs the Middle Fork of the American River.

2. Being on any National Forest System Road within the Mosquito Fire Closure Area, as shown on Exhibit A. 36 C.F.R. § 261.54(e).
3. Being on any National Forest System trail within the Mosquito Fire Closure Area as shown on Exhibit A. 36 C.F.R. § 261.55(a).

Pursuant to 36 C.F.R. § 261.50(e), the following persons are exempt from this Order:

1. Any Federal, State, or local officer, or member of an organized rescue or fire-fighting force in the performance of an official duty.
2. Persons with Forest Service Permit No. FS-7700-48 (Permit for Use of Roads, Trails, or Areas Restricted by Regulation or Order), specifically exempting them from this Order.

3. Owners or lessees of land and residents of such private landholdings, to the extent necessary to access their land.

These prohibitions are in addition to the general prohibitions contained in 36 C.F.R. Part 261, Subpart A.

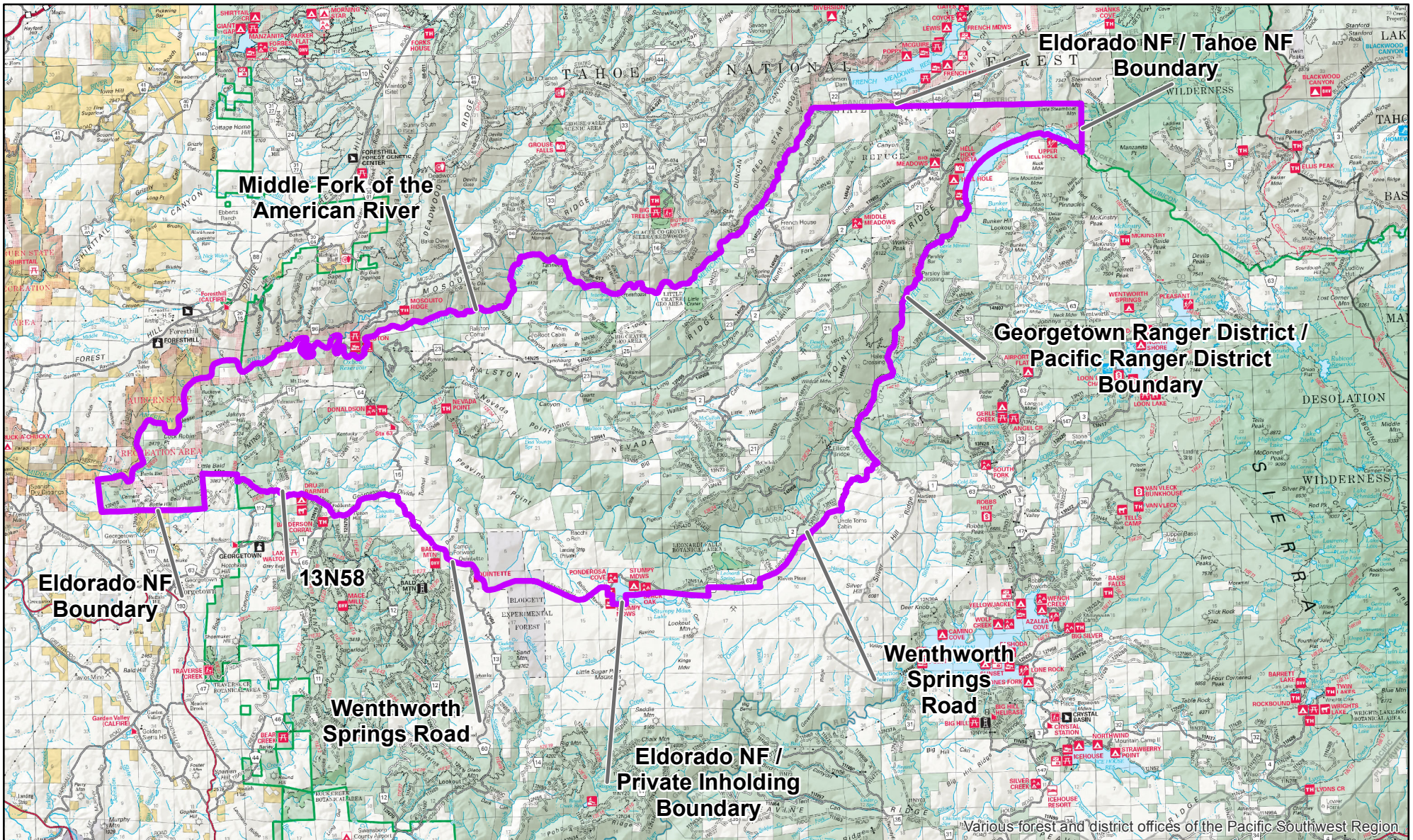
A violation of these prohibitions is punishable by a fine of not more than \$5,000 for an individual or \$10,000 for an organization, or imprisonment for not more than 6 months, or both. 16 U.S.C. § 551 and 18 U.S.C. §§ 3559, 3571, and 3581.

Executed in Placerville, California, this 22nd day of September 2022, at 09:00 m.



JEFF MARSOLAIS
Forest Supervisor
Eldorado National Forest
Pacific Southwest Region

This Order supersedes Forest Order No. 03-22-16, dated September 9th, 2022.



Order No. 03-22-17
Eldorado National Forest
Mosquito Fire Closure

 Mosquito Fire Closure

Exhibit A

