



United States Department of the Interior



BUREAU OF LAND MANAGEMENT
Medford District Office
3040 Biddle Road, Medford, Oregon 97504
<http://www.blm.gov>

Amended EMERGENCY CLOSURE OF PUBLIC LANDS

AGENCY: Bureau of Land Management, Medford District, Oregon.

ACTION: Temporary Closure of Public Lands

SUMMARY: Pursuant to 43 CFR 9268.3(d) and 43 CFR 8364.1, the Bureau of Land Management (BLM) hereby provides notice that effective immediately, the public lands described below are closed to all forms of public access. This action is in response to the Rum Creek Fire that is currently active in the area, and updates the previous order of August 28, 2022. The BLM is keeping the following public lands closed in order to reduce conflicts with emergency crews and allow for fire suppression, as well as to ensure public safety.

AFFECTED AREA: Please see attached map. This closure consists of two closure areas in Josephine County: east of the Rogue River from Galice to the Grave Creek Bridge, and west of the Rogue River from Galice to Grave Creek Bridge, as follows:

The east closure area includes all BLM-managed public lands, roads, sites, and trails (except as noted below) east of the Rogue River to Grave Creek Bridge, south of Lower Grave Creek Road, west of T34S R6W and T35S R6W and north of Galice Road to Hellgate Bridge and from the Bridge north of the Rogue River to Galice.

The west closure area includes all BLM-managed public lands, roads, sites, and trails (except as noted below) west of the Rogue River from Galice to the Grave Creek Bridge, south of the Rogue River, east of T34S R9W and T35S R9W, and north of Bear Camp Road.

Galice Road from the Grave Creek Bridge south to Alameda County Park will remain CLOSED. Bear Camp Road remains open.

The Rainie Falls National Recreation Trail (left) remains CLOSED. The Rogue River National Recreation Trail (right) is now OPEN. The Rogue National Wild and Scenic River remains open, with permits required according to the usual schedule.

The Rocky Bar, Robert Dean, Chair, and Rand recreation sites will remain CLOSED.

Smullin Visitor Center is now OPEN.

BLM administered Lands in the following are affected by this closure:

T33S R7W - Section: 31, 32, 34

T33S R8W - Section: 32, 33, 34

T34S R7W - entire Township/Range

T34S R8W - entire Township/Range

T35S R7W - Section: 1, 2, 3, 4, 5, 6, 10, 11, 12, 13, 14

T35S R8W - Section: 2, 3, 4, 5, 6

DATES: This closure is effective immediately and will remain in effect until such time as conditions allow for safe use of the public lands.

FOR FURTHER INFORMATION CONTACT: Kyle Sullivan, Public Affairs Officer, 3040 Biddle Road, Medford OR 97504, telephone (541) 618-2340. This notice is also available online at <https://www.blm.gov/programs/public-safety-and-fire/fire-and-aviation/regional-info/oregon-washington/fire-restrictions>.

DISCUSSION OF THE RULES: The public must not enter the closure area. All uses within the closure area are prohibited. Exceptions to these prohibitions are noted below under Exemptions. Incidents of extreme fire behavior and extreme fire danger have been observed throughout the District. You must not enter closed areas. This restriction will be rescinded once fire conditions improve and public and firefighter safety can be ensured.

EXEMPTIONS: The following persons are exempt from the provisions of this Order:

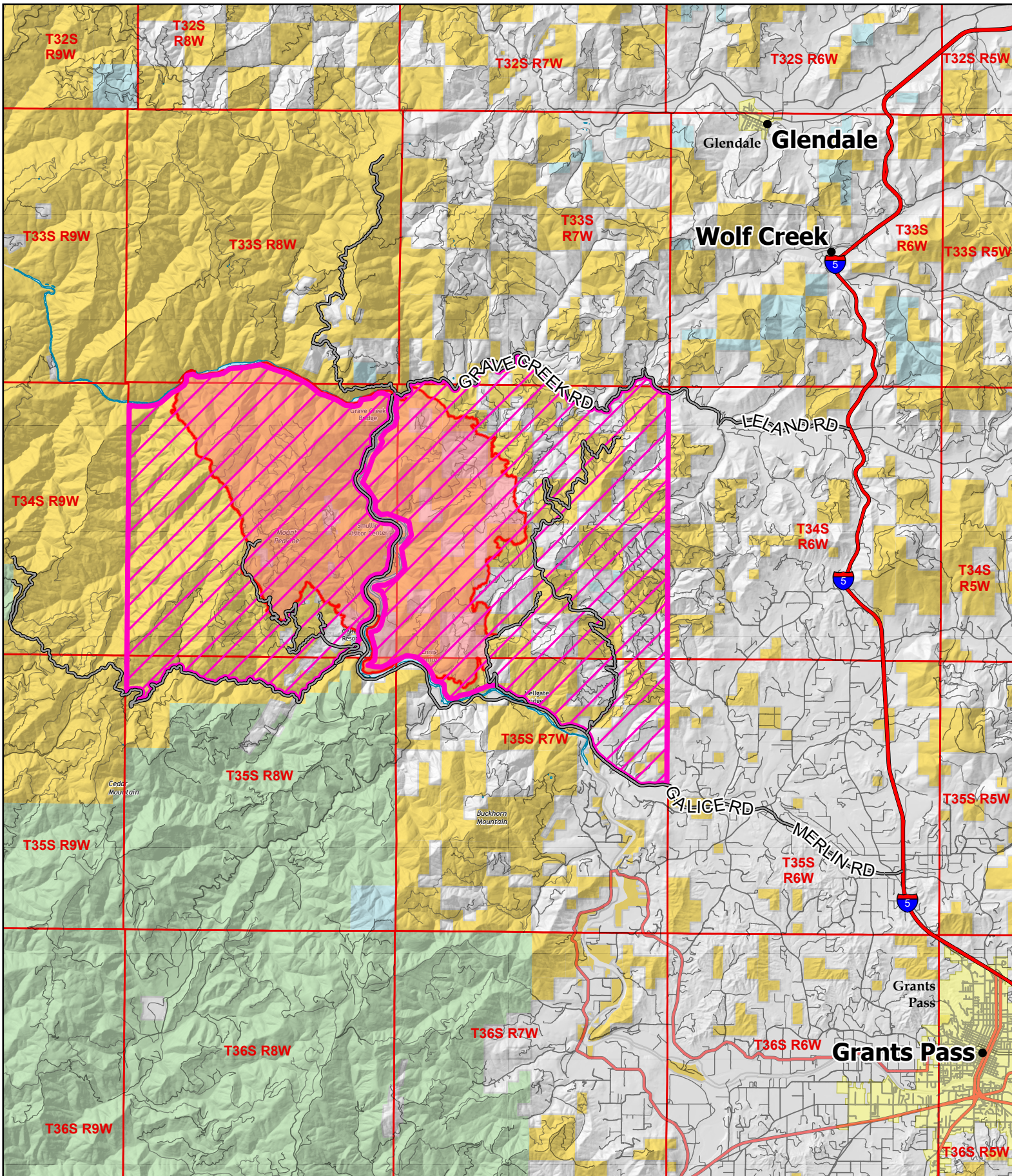
1. Any Federal, State, or Local Officer, or member of an organized medical, rescue or firefighting force engaged in fire, emergency, or law enforcement activities, or public utility employees engaged in emergency repairs;
2. BLM employees, contractors, or agents engaged in official duties;
3. Individuals operating within the scope of their official and legitimate governmental duties;
4. Individuals with valid existing rights for access (e.g., Reciprocal and Unilateral Right of Way agreement holders, permit holders, permittees or lease holders, or internal landowners); and
5. Parties who carry written approval by the BLM Authorized Officer (Field Manager or District Manager) allowing access to the described public lands.

PENALTIES: Any person who violates this may be tried before a United States Magistrate and fined in accordance with 18 U.S.C. 3571, imprisoned for no more than 12 months, or both. Vehicles found in violation of this order may be removed.

EFFECTIVE: This Order is effective immediately upon signature.

Jared Nichol, Agency Administrator

9/17/2022
Date



Rum Creek Fire Closure Area



- Wildfire Perimeter
- Bureau of Land Management
- US Forest Service
- State
- Private/Unknown

