

Order Number: # 01-14-07-22-16



**U.S. Department of Agriculture, U.S. Forest Service
Kootenai National Forest
Cabinet Ranger District**

Area, Road, and Trail Closure

PROHIBITIONS

Pursuant to 16 U.S.C. § 551 and 36 C.F.R. § 261.50 (a) and (b), the following is prohibited on the National Forest System (NFS) lands, roads, and trails in the Cabinet Ranger District, Kootenai National Forest, described below and shown on the attached map incorporated into this Order as Exhibit A:

1. It is prohibited to go into or be upon an area or be upon any road or trail which is closed for the protection of: Public health or safety. 36 C.F.R. § 261.53(e).

EXEMPTIONS

Pursuant to 36 C.F.R. § 261.50(e), the following persons are exempt from this Order:

1. Persons with Forest Service Permit No. FS-7700-48 (Permit for Use of Roads, Trails, or Areas Restricted by Regulation or Order), specifically exempting them from this Order or a written determination by a Forest Service authorized officer that a permit is not required under 36 C.F.R. § 251.50(e)(1) or (2).
2. Any Federal, State, or Local Officer, or member of an organized rescue or firefighting resource in the performance of an official duty.

DESCRIBED Area, Road, and Trail Closure

As depicted on the map attached as Exhibit A and hereby incorporated into this Order, the following closures will be implemented:

- Area Closure on National Forest Lands contained by the following description:
 - Starting at the Junction of MT HWY 200 and Blue Creek County road at T27N R34W Sec 20 SWNW, Federal lands north of, but not including MT

HWY 200, to the intersection with Range Line R33W and R34W, at T27N R34W Sec 36 NENE; then Federal lands west of Range Line R33W and R34W north to the NE corner of T27N R34W Sec 12; then Federal lands south and west of the South and West Section Boundary of T27N R34W Sec 12 and West Section Boundary Sec 1 to the NW Corner of T27N R34W Sec 1; then Federal lands south of T27N and T28N Township Line west to the intersection of Township Line and Blue Creek; then Federal lands east and including Blue Creek south to the junction with NFS Road 409 at T27N R34W Sec 3 SWSW; then Federal lands east of and including NFS Road 409 from its terminus to the easterly junction of private land intercept in T27N R34W Sec 9 SWSE; and Federal lands south and east of, but not including, Blue Creek County Road to point of origin.

- Road and Trail closures as identified below:
 - NFS Road 409 from Junction with Private land at T27N R34W Sec 9 SWSE NE to terminus;
 - NFS Road 2290 at T27N R34W Sec 9 SE in its entirety;
 - Starting on NFS Road 2292 at junction with MT HWY 200 in T27N R34W Sec 25 SESW, west to the junction of NFS Road 200 and Fatman County Road junction at T27N R34W Section 20 NENE;
 - NFS Road 2292B at T27N R34W Sec 26 NW in its entirety;
 - NFS Road 2721 in its entirety;
 - NFS Trail 998 (Big Eddy Motorized and Non-Motorized Trail) in its entirety;
 - NFS Trail 999 (Big Eddy Non-Motorized Trail) in its entirety;
 - NFS Trail 1016 (Star Gulch) from junction with NFS Trail 998 (Big Eddy Trail) northeast to east section boundary of T27N R34W Sec 12 ;
 - NFS Trail 1036 (Pilik Ridge) from junction with NFS Trail 1016 (Star Gulch Trail) east to east section boundary of T27N R34W Sec 24;

All closures are located north and northwest of Noxon, Montana.

PURPOSE

The purpose of this Order is to provide for public and firefighter safety due to active fire suppression activities on the ***Billiard Fire***.

IMPLEMENTATION

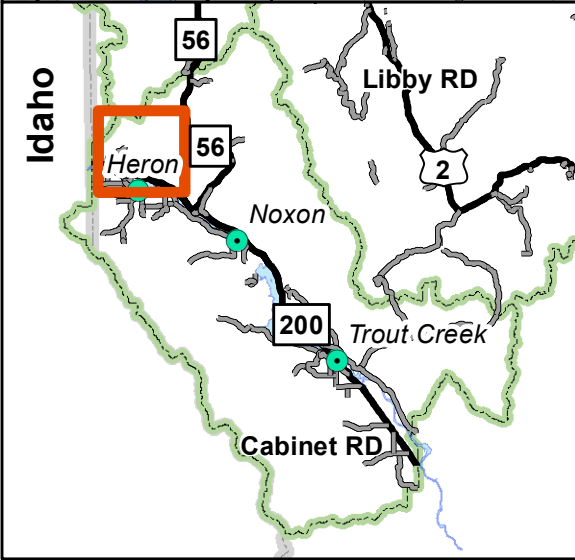
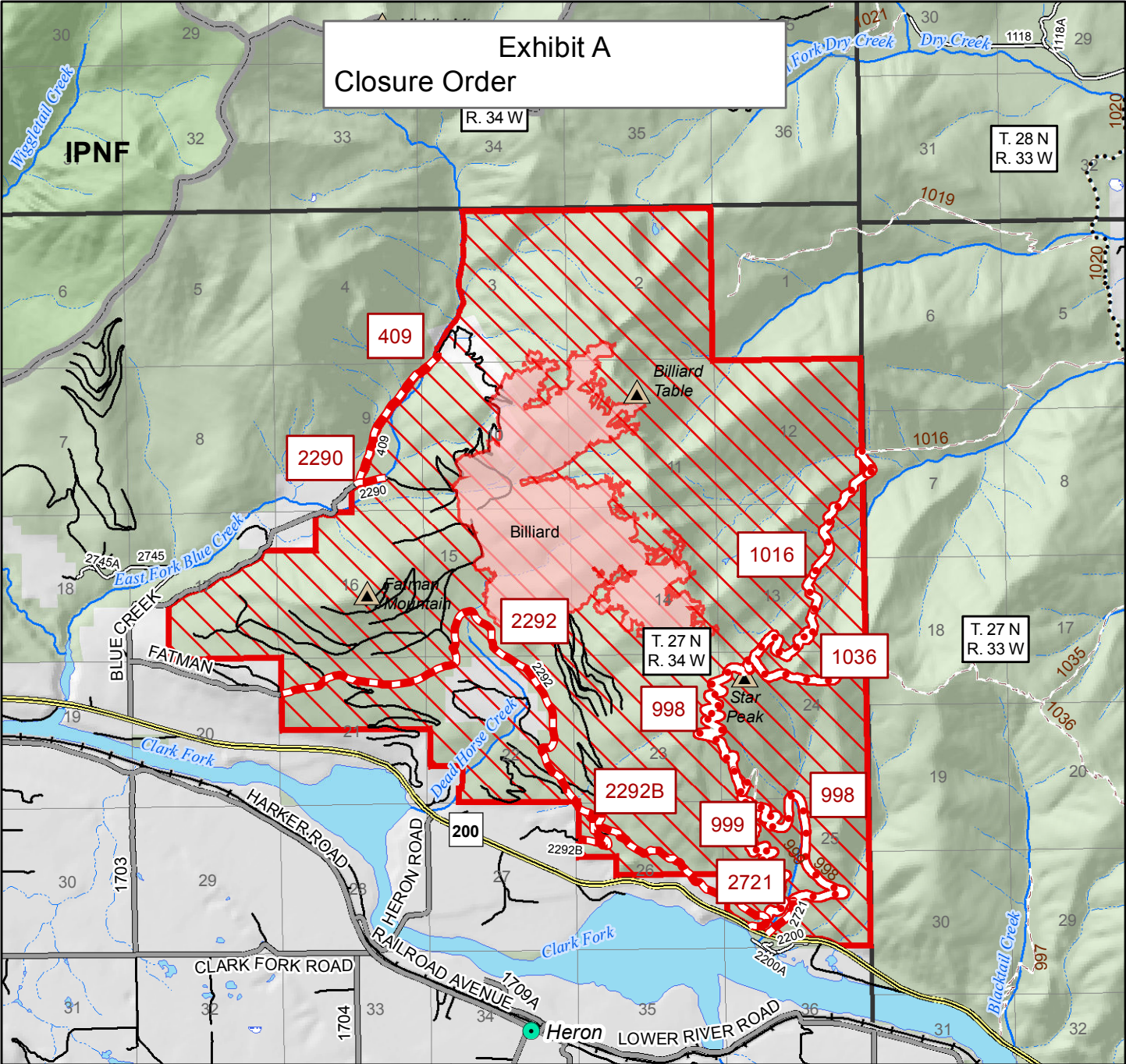
1. This Order shall be in effect from September 6th, 2022 at 0600 through December 31, 2022 at 1800, unless rescinded.
2. A map identifying the Described Roads and Trail is attached and made part of this Order as Exhibit A. For a digital version of this Order and Exhibit A, go to <https://www.fs.usda.gov/kootenai>.
3. Unless otherwise expressly defined in this Order, the terms used in this Order are defined by the regulations of the Secretary of Agriculture, 36 C.F.R. Chapter II, Parts 200-299. If there are terms in this Order that are not expressly defined in the Order or 36 C.F.R. Chapter II, Parts 200-299, their meaning shall be determined by their plain language definitions.
4. A violation of the above prohibitions is punishable as a Class B misdemeanor by a fine of not more than \$5,000 for individuals and \$10,000 for organizations, or by imprisonment for not more than six months, or both. 16 U.S.C. § 551; 18 U.S.C. §§ 3559, 3571, and 3581.
5. Contact the Cabinet Ranger District in Trout Creek, MT, (406) 827-3533, and Kootenai National Forest Supervisor's Office in Libby, MT, (406) 293-6211, for more information about this Order.
6. This Order supersedes any previous Orders prohibiting the same or similar acts on the same Described Road.

Signed and issued on 9/16/22



Chad W. Benson
Forest Supervisor
Kootenai National Forest

Exhibit A Closure Order



- Cities
- Road Closure
- Trail Closure
- Wildfire Daily Fire Perimeter
- Area Closure

MVUM Legend

- Open FS Roads (Highway Legal)
- Open FS Roads (Seasonal Restrictions)
- Major Highways
- Trails Open to Vehicles 50" or Less in Width, Yearlong
- Trails Open to Motorcycles Only, Yearlong

N

0 1 2

Miles

KPM
9/15/2022