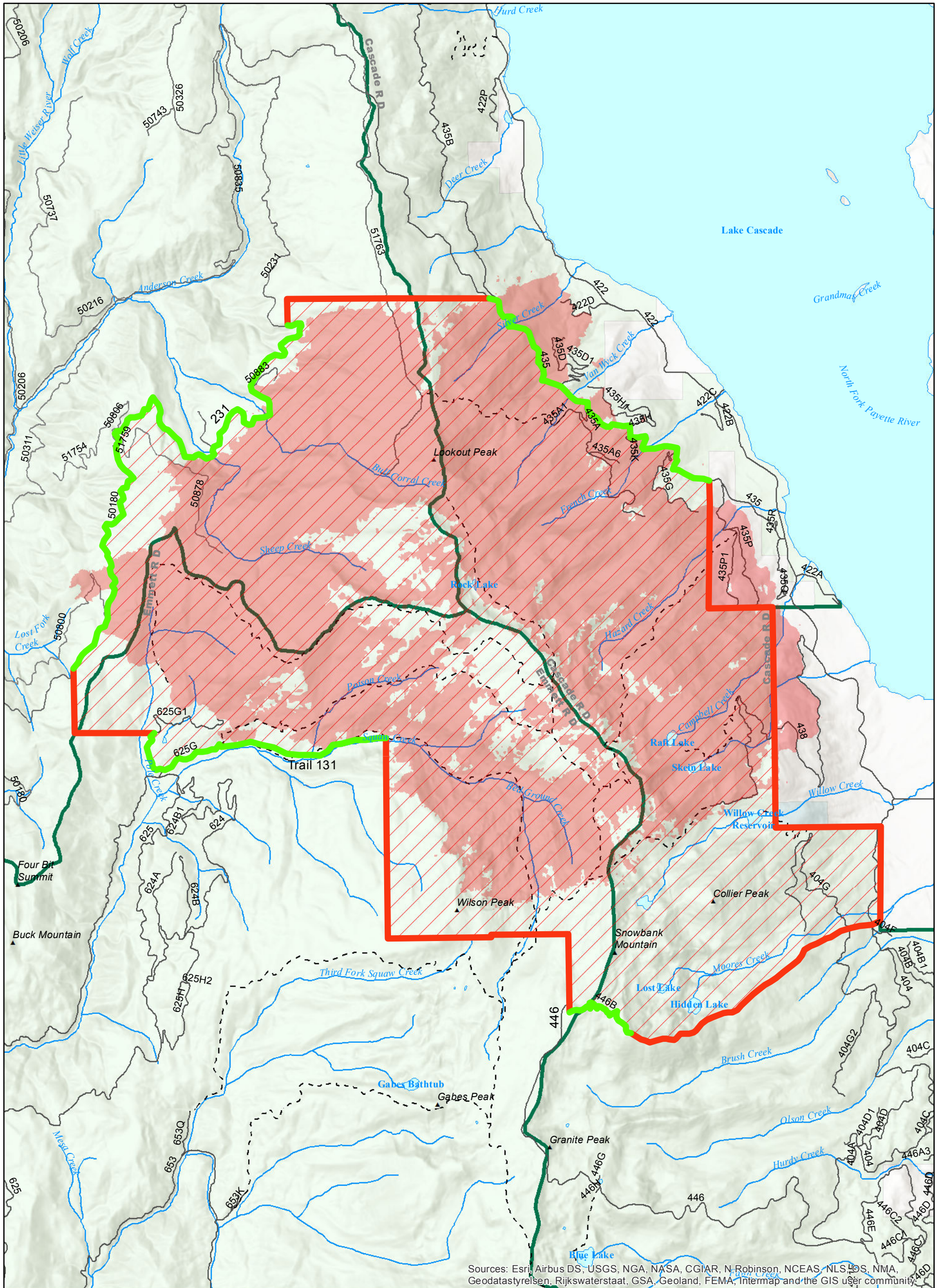




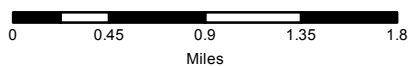
Forest Service  
U.S. DEPT OF AGRICULTURE

# Boise and Payette National Forests

## Exhibit A, Four Corners Fire Closure Order 0402-04-95



Sources: Esri, Airbus DS, USGS, NGA, NASA, CGIAR, N. Robinson, NCEAS, NLS, EOS, NMA, Geodastystyrelsen, Rijkswaterstaat, GSA, Geoland, FEMA, Intermap and the GIS user community.



- Open Perimeter Roads/Trails
- Closed Perimeter Roads/Trails
- Fire Perimeter
- Closure Area
- Boise NF Boundary
- BLM
- USFS
- Other Federal
- State
- Private

### Four Corners Fire

13,717 acres  
96% contained  
9/15/2022

Prepared by: Information Resources Management  
Supervisor's Office  
Boise National Forest  
Boise, Idaho

Produced: 9/13/2022 By: jfoust  
Projection: UTM 11 N, NAD83

File: T:\FS\NFS\Boise\Program\2600\WildlifeMgmt\GIS\Workspace\jfoust\projects\wildfire\2022 Four Corners\Area\_closure\_map\_20220913\20220913\_FourCorners\_areaclosuremap\_11x17.mxd

UTM Zone 11N  
NAD83

The U.S. Department of Agriculture, Forest Service uses the most current and complete data available. GIS data and product accuracy may vary. They may be developed from sources of differing accuracy, accurate only at certain scales, based on modeling or interpretation, incomplete while being revised or created, etc. Using GIS products for purposes other than those for which they were created, may yield inaccurate or misleading results. The Forest Service reserves the right to correct, modify, or replace GIS products without notification.