



# Owl and Horse Fires

Tuesday September 13, 2022 – 8:30 a.m.

Fire Information Phone: 208-339-9626

Email: [2022.owl@firenet.gov](mailto:2022.owl@firenet.gov)

### Quick Facts

Fire Name	Owl	Horse
Fire Location	20 miles west of North Fork on the North Fork Ranger District	approximately 5½ miles northwest of Corn Creek on the North Fork Ranger District in the Frank Church River of No Return Wilderness
Start Date	09/08/2022 at 07:06 MDT	09/08/2022 at 13:06 MDT
Cause	Undetermined	Undetermined
Approximate Acreage	739 acres	90 acres
Containment	0	0
Fire Resources	61	

**Summary:** The Owl and Horse fires are under the command of Wyoming Type 3 Team 5. Both fires are zero percent contained. The Owl Fire is estimated to be 739 acres while the Horse Fire remains at 90 acres. Between the two fires there are 61 personnel including 4 Engines, 1 Crew, 1 Fire Module, 1 Ambulance, 2 Fireline Paramedics, and 1 Overhead Team.

**Yesterday:** Firefighters completed the structure assessments of the Owl Creek area. They continued to identify opportunities for treatment options, such as thinning and deploying sprinkler systems. Crews began brushing Owl Creek Trail - #6152 and East Owl Creek Trail #6153, An Infrared (IR) flight was conducted on the Owl fire and showed spread to the southeast and creeping to the northeast, as can be seen on the attached map. On the Horse fire structure prep was conducted.

**Today:** Due to the steep terrain, fuel types, and firefighter safety an indirect strategy is being utilized. On the Owl Fire, crews will continue brushing and enhancing Owl Creek and East Owl Creek Trails. The engines will begin installing sprinklers and other treatment options for identified values at risk. On the Horse Fire, firefighters will continue with structure protection, scouting and monitoring. Fire managers will continue to evaluate and modify a strategic, risk-based response which is appropriate for the circumstance on the ground, and weights probability of success, opportunities and challenges, while providing for firefighter, and public safety.

**Weather:** Increasing clouds through the morning with areas of smoke. A chance of showers and thunderstorms in the afternoon. High temperatures in mid to high sixties and humidity around 30 percent. Light winds 6 mph in the morning shifting to the southeast to south at 8 mph in the afternoon. Gusty and erratic winds possible with the approaching thunderstorms.

**Safety Message:** With hunting season upon us check fire conditions and know before you go. Be sure to follow safe shooting practices. An increase of rocks and debris may fall onto the roads during the rain event, travel with care. Minimizing risk to responders and public safety are the top priorities for the Owl and Horse Fires. Fire managers appreciate your cooperation. If you are recreating near an ongoing wildfire suppression operation, please keep your distance - do not congregate in the area and allow the firefighters to do their job safely and efficiently.

#### Horse and Owl Public Information:

Facebook: <https://www.facebook.com/salmonchallisnf> Twitter [@salmonchallisnf](https://twitter.com/salmonchallisnf)

Salmon Challis National Forest: <https://www.fs.usda.gov/scnf>

E-mail: [2022.Owl@firenet.gov](mailto:2022.Owl@firenet.gov)

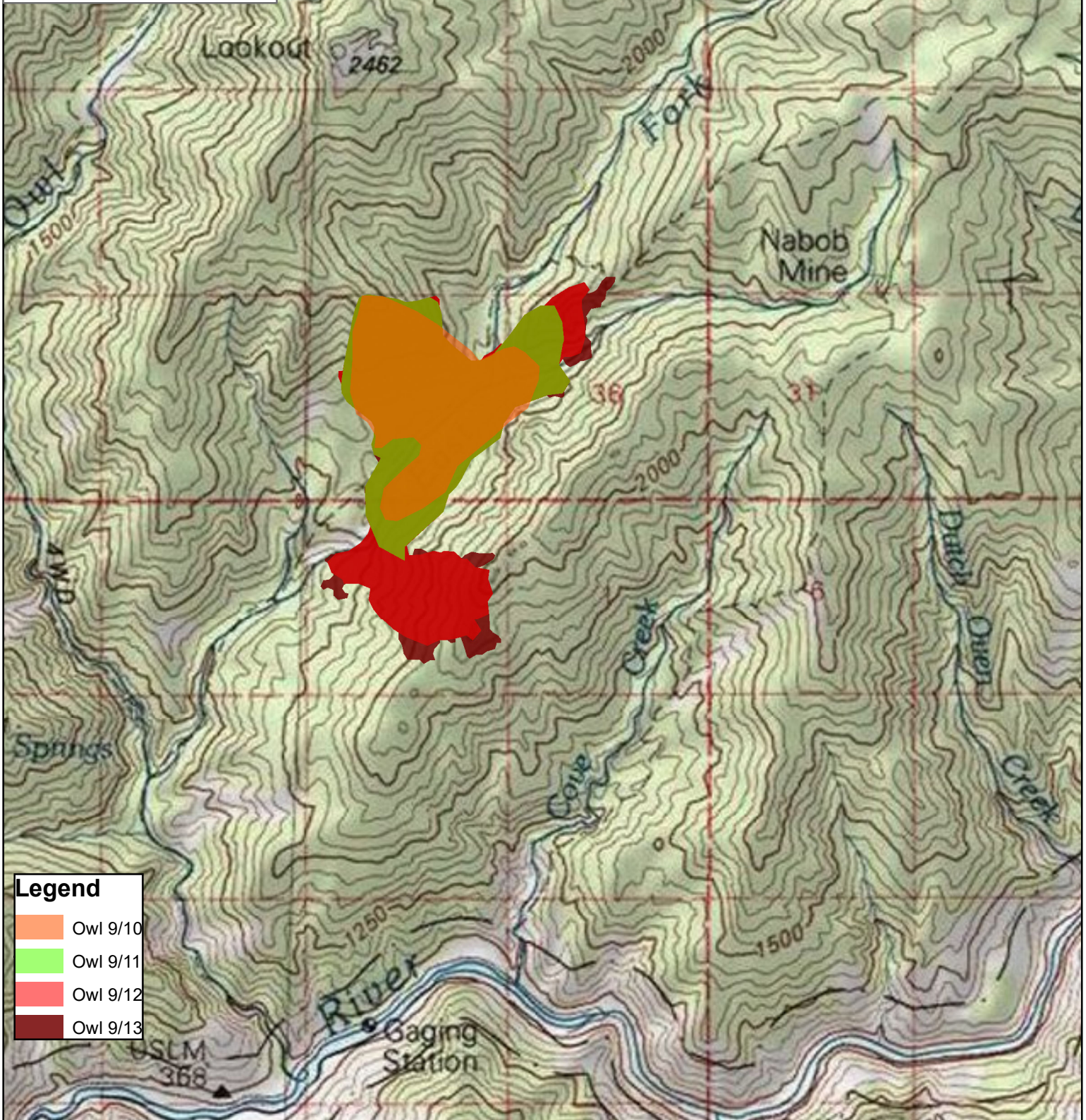
Inciweb: <https://inciweb.nwcg.gov/incident/8416/>



# Owl Fire Progression



365 Acres - 9/10  
495 Acres - 9/11  
689 Acres - 9/12  
739 Acres - 9/13  
Travis Pardue - PSC3



**Legend**

- Owl 9/10
- Owl 9/11
- Owl 9/12
- Owl 9/13