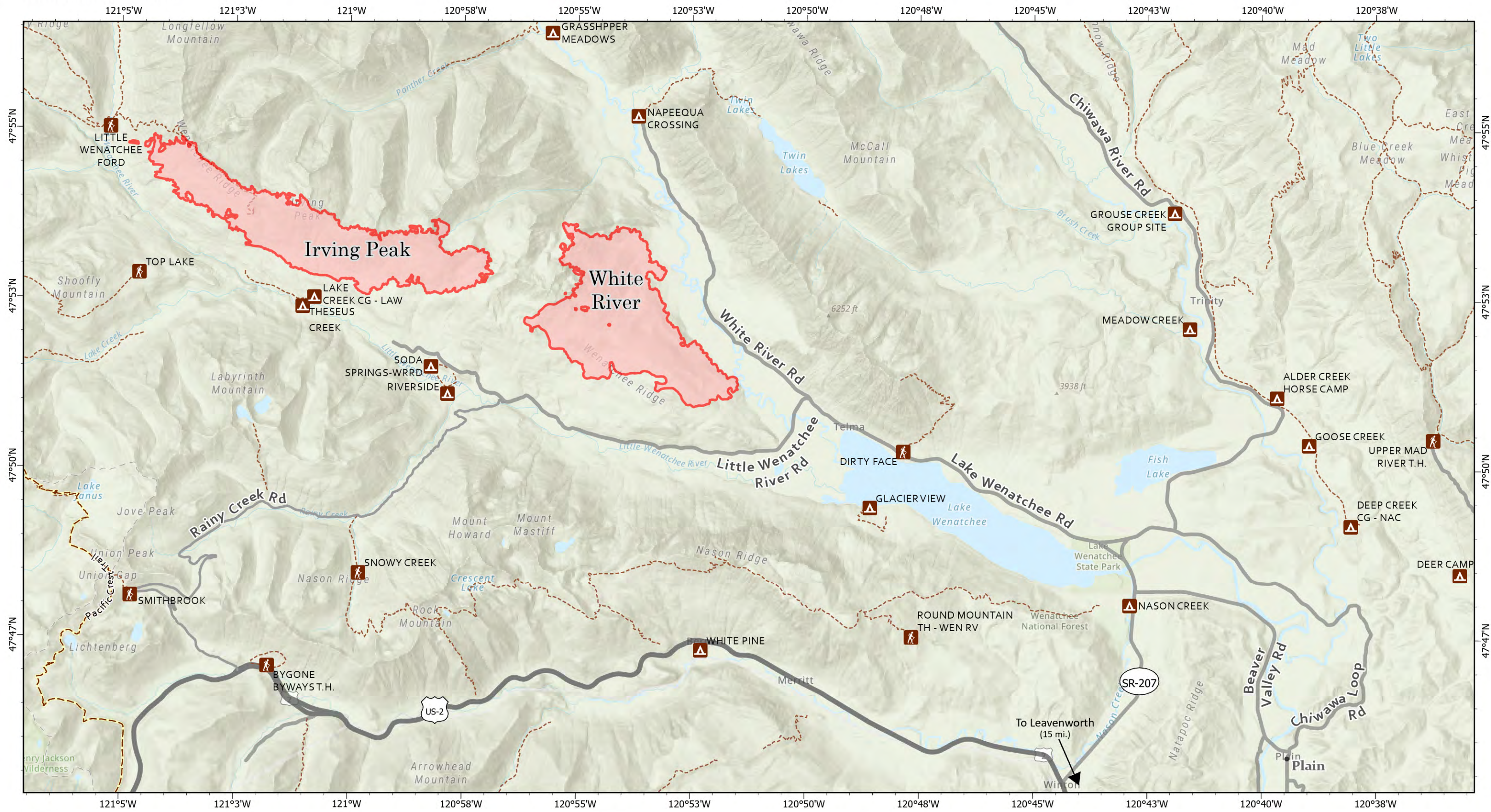









# Fire Information



**White River**  
**WA-OWF-000319**  
 3,184 acres  
 Acres as of 9/13/22 1127 PDT  
 Map Updated: 9/13/2022

**Irving Peak**  
**WA-OWF-000315**  
 3,226 acres

-  Interstate or US Highway
-  State Highway or Major Arterial Collector
-  Arterial or Collector
-  Trail
-  Pacific Crest Trail
-  Campground
-  Trailhead

