



UNITED STATES DEPARTMENT OF AGRICULTURE
FOREST SERVICE
WILLAMETTE NATIONAL FOREST
SPRINGFIELD, OREGON

ORDER # 06-18-10-22-24

FOREST ORDER
CEDAR CREEK FIRE EMERGENCY AREA CLOSURE

Pursuant to 16 U.S.C. § 551 and 36 C.F.R. § 261.50(a) and (b), and to provide for public safety, the following acts are prohibited on the National Forest System (NFS) areas, roads, and trails described below within the administrative boundaries of the Willamette National Forest. This Order is effective on September 9, 2022, and will remain in effect through October 10, 2022, unless rescinded sooner. This Order supersedes Order 06-18-10-22-22.

PROHIBITIONS:

1. Being on the road. **36 CFR § 261.54(e)**
2. Being on a trail. **36 CFR § 261.55(a)**
3. Entering in to or being upon National Forest System Lands closed for the protection of public health or safety. **36 CFR § 261.53(e)**

CLOSURE DESCRIPTION:

The closure area is located within the State of Oregon, Lane County, and within the Administrative Boundaries of the Willamette National Forest. The closure applies to the NFS areas, roads, and trails and trailheads described below. The closure area is depicted on the attached map, which is incorporated into this order as "Exhibit A".

Area Closure Description

In Township 19 South (T.19S.), Range 5 East (R.5E.), Section 30 (Sec.30), Willamette Meridian starting at the junction of Forest System Road 19 (FSR 19) with Kiahanie Campground access road (FSR 1900750A); the closure then proceeds east then north along FSR 19—to include closure of FSR 19—to the intersection with FSR 1900441, near Frissell Crossing. The closure then follows FSR 1900441 to its junction with Forest System Trail 3529 (Trail #3529), the Olallie Trail. Trail #3529 marks the northern edge of the closure area and continues northeast to the intersection with Trail #3331 (Wildcat Trail), and follows Trail #3331 to the east until it intersects Trail #3538 (Water Holes Trail); it then proceeds south until Trail #3538 intersects with the northern edge of Township 19 South. At this junction the closure boundary continues east, along the northern edge of T.19S. for about 4 miles until it bisects the Willamette National Forest boundary with the Deschutes National Forest. This intersection begins the eastern boundary of the closure area. The closure boundary then continues south along the Willamette National Forest-Deschutes National Forest boundary (same boundary as the Lane County-Deschutes County line) for about 26 air miles until it intersects with Oregon State Highway 58 (OR 58). This point begins the southern edge of the closure boundary. The closure then follows the northern edge of OR 58 and continues west to the junction with FSR 5871. This point marks the western edge of the closure, and continues northward to the junction with FSR 2408; it then follows FSR 2408 northwesterly towards the

intersection with FSR 24; and continues easterly along FSR 24 until the junction with FSR 2409. The closure boundary continues northwesterly along FSR 2409 until it intersects with FSR 1931. The boundary then proceeds north along FSR 1931 for approximately ¼-mile until it reaches the northwest corner of Sec. 30, R.4E., T.20S. The closure boundary continues west from this point, crossing from T.20S. R.4E., Sec. 30 into T.20S., R.3E., Sec. 25 and Sec. 26; it follows the northern edge of Sec. 25 and Sec. 26 until it intersects FSR 19. The closure boundary then follows the eastern and southern edge for FSR 19—to exclude closure of FSR 19—until it reaches its starting point at the FSR 19 and Kiahanie Campground junction.

This closure does not include OR 58.

EXEMPTIONS:

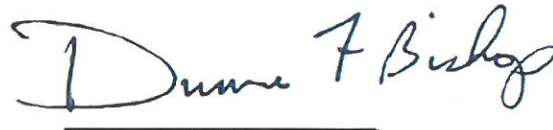
Pursuant to 36 CFR § 261.50(e), the following are exempt from this Order:

- (1) Persons with Forest Service Permit No. FS-7700-48 (Permit for Use of Roads, Trails, or Areas Restricted by Regulation or Order) specifically exempting them for this Order.
- (2) Any Federal, State, or Local Officer, or member of organized rescue or firefighting force in the performance of an official duty.

These prohibitions are in addition to the general prohibitions in 36 CFR Part 261, Subpart A.

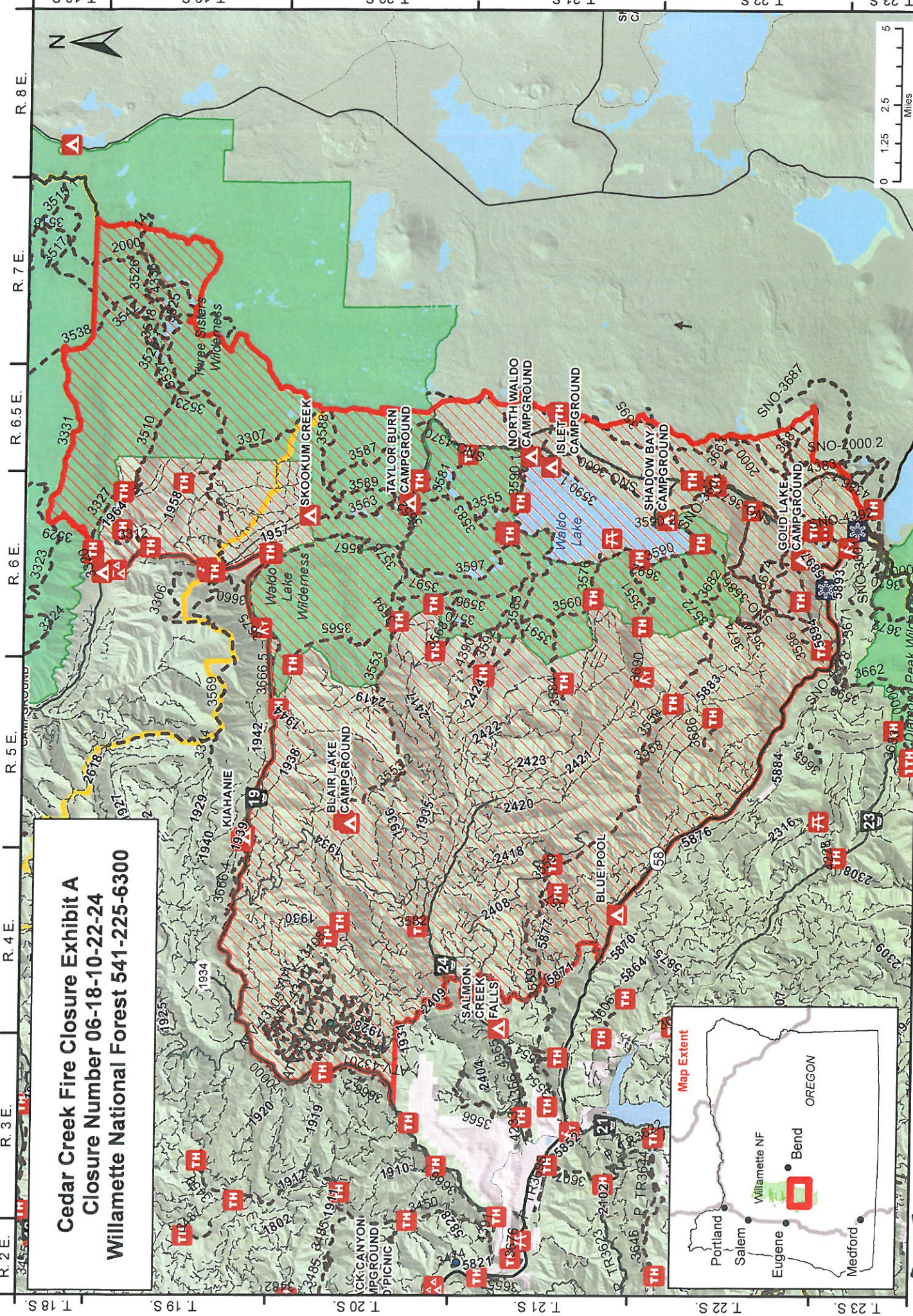
Violations of these prohibitions are punishable by a fine of not more than \$5,000 for an individual or \$10,000 for a corporation or imprisonment for not more than six months or both. 16 U.S.C. § 551 and 18 U.S.C. §§ 3551, 3559, 3571, and 3581.

Executed in Springfield, Oregon, on this 9th day of September 2022.

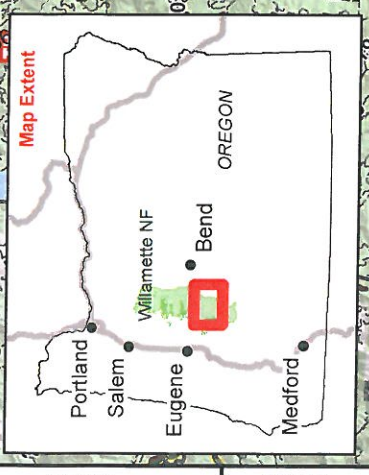


Duane Bishop
Forest Supervisor (Acting)
Willamette National Forest

Cedar Creek Fire Closure Exhibit A
Closure Number 06-18-10-22-24
Willamette National Forest 541-225-6300



- USFS Admin Boundary
- Wilderness
- National Forest Land
- Other Federal Land
- Area Closure
- Trails
- Paved Road
- Gravel/Dirt Road, Suitable for Passenger Car



Cedar Creek Fire Closure Exhibit B
Closure Number 06-18-10-22-24
Willamette National Forest

Closed Forest System Roads:

5894405	2408038	5871338	5800421	1931243	5883345	1928732	2400260
5874341	1934401	1958351	5883202	1958331	1958385	5877201	1928109
1958361	2408108	1958345	5800027	1900441	5897010	1900069	2422202
1900471	1934739	1928017	1934232	5877354	1928050	2408066	2417107
1931720	1934723	2418286	1958309	2400024	1934740	1935043	1931726
2424270	1934746	1934757	2422201	1934103	5871078	1938102	5800500
5883361	2400107	1958301	1935010	2418295	5800019	5877108	1934729
5877209	2424271	1900065	1931713	5883360	5883125	1900025	1928703
1928738	2423315	2424000	1900101	2423318	2421102	1934722	1900080
1934702	5800420	5871365	5871326	5800021	2420000	1935011	5883000
1958307	1936000	5871000	2408277	5894406	1934109	1958341	5871362
5883344	2408288	1900755	2419000	5877350	1900070	2422037	1935045
1900710	2424101	2400027	1928259	5871393	1931239	2422216	2408279
1934236	1900470	2424275	2424105	2420104	1928302	2409225	1964455
5883500	1934222	2421030	1900074	2418000	5883131	2400108	5877337
5800303	2409208	2409000	5883381	5800047	1900716	5896545C	5871336
1958384	1958306	1934731	2408275	2418107	1958311	5877206	2408106
1935039	1964480	5871324	1900059	1934745	1958310	5800026	5871358
5883378	1958387	5871329	2423304	5877345	2422274	5800364	2424103
2420301	2423307	1964456	2421393	1928721	2422263	1931731	2409223
1958393	2417000	1958327	5877327	1928255	5883259	2417249	5877329
5800019	2424335	2419392	1931252	1930702	5896545B	2408104	1934235
2408306	5896000	5877357	2417255	1958304	1944250	1934101	2422225
5871332	2424269	2417110	2417113	2418300	2422279	5800302	1935000
2409220	5894202	1934237	2422209	1900081	2422200	2421113	5898518
5800366	1928725	1958364	1900440	5800338	1958373	2424107	1934021
1925000J	1935101	1934000	1931701	2408278	5800359	2400022	1934104
1957010	2408037	5874301	1964402	1944751	1964406	2421108	1928742
1934752	5800365	1934721	1931703	2408105	2408103	1934727	1934014
1958104	2418296	5800355	2400105	2418297	2421104	2419021	2419101
1928717	1938414	2422269	5883130	1934023	1930694	5871331	2400106
1935201	1934401	2422214	5883207	2420107	5894201	2422306	1928700
2422040	2408036	1938105	2422220	5871348	2417248	1958339	2400109
1928709	2408044	5871371	1931800	2422275	5883373	1931730	1934741
2422211	1928290	1928713	1958342	5874302	5883254	1935202	5877353
2420103	5871347	2417106	2421114	5877082	5800372	1900919	2417104
1958107	2408276	5883366	2400265	1931719	1900709	2422262	1928715
2420314	5877355	1928279	1931259	1928719	1935105	1931250	2424267
1936242	1934000	2409104	5877081	2417254	1958332	1928704	5871337
2400025	1928227	2400104	1935249	2419363	2420306	1934112	1958349
5894408	1930701	1900068	1931729	2420310	1935240	5883249	1958389
1920000	2421106	1928731	5883503	1931702	2424102	2418293	1900061
5800500B	2423306	2418294	5877207	2417266	5894407	1934020	5871102
1958316	5883384	5883342	2422206	1934748	1964000	1928301	5896545D
2422271	1931258	1928705	1928226	2419000	5883383	1934107	5877202
1958379	1928723	5883256	5883367	5800422J	1957110	1900000	1958348
2408280	1957112	1925000	1944750	1931257	1928706	5871373	1930684

2422205	1930690	5871392	2420102	1928729	5800358	2417108	5898517
2417112	1900055	5877339	2421112	2423305	1928240	2408000	1900750
1928739	1958340	5800368	5877348	5871312	2422227	1935102	5883371
5800800	1958386	1931727	5800028	5800031	1944050	1958366	5883250
5874346	1900448J	1928720	1936245	1958299	1939000	2421392	2420313
5877341	1928716	1900063	1900703	1958109	2417000	5871339	1931740
1958101	1958388	2421028	1900910	1928735	1900749	1958326	1964457
1930680	2422301	2422226	2419000	5871327	1934113	1958475	5883375
1928020	2408286	1928736	2420101	1958102	5800053	2419361	1900082
1928254	1958363	1958304	1931255	1958322	5883341	5800371	5877203
5897000	5898516	5898514	1928021	2409102	1919000	2400023	5883345
5883208	1934102	5874344	5898515	1938000	5883369	1928224	2400292
2418298	1934735	2422300	1934810	2423300	5800363	1958106	5871321
1931728	1934022	1958110	1931251	2400000	1928737	5898519	1938101
1931253	5883245	2418299	1928711	5883379	5896545A	2417103	1958359
5874000	2417101	2423033	5898510	2421390	2422035	5898520	5874342
1930000	5883385	2423303	1934114	1900064	5800357	1958103	2422208
2424268	2420300	1930101	5898000	2420106	5800362	1900448	2422268
2422030	2408045	1934019	1934405	1928270	2408010	1928278	5897012
5877342	2422272	1926000	2418020	1934724	1928773	1958323	1935108
1958352	2400290	1928246	2417109	1958320	2417253	2422212	1934747
2400256	2408042	1928722	1964414	2424252	5877205	5883209	2408282
5800356	2422260	5871346	1931724	2419341	1900076	5871323	1900075
5897011	2418104	2422207	5871399	1900058	5883253	5877356	5883206
1935107	5896504	1928261	2409210	1958319	1934732	1934233	1934733
5871043	1958358	1900072	5800521	5877353	1958108	2422000	1931723
5871356	5800354	2422039	5883255	1958315	1931256	2421029	1931721
1935231	2422266	1931704	2409105	2421110	2400257	1931710	5877000
5871340	1938104	5883205	1928186	5896545	5877208	1958337	5800400
1934728	5894000	1934738	1928247	1934110	1931722	1900056	1928728
2400270	2419345	2417256	1934040	1900073	1935046	2400231	5800304
5871330	5877349	1958356	5871325	2422224	2424279	5877204	5883372
1900102	5877344	5800023	1944000	1934391	1931235	1934719	1928712
2400230	5871345	5800052	2409212	1934744	2419140	1936103	5871350
5800360	1928275	2419321	5871328	2422265	1958347	1935042	2408039
5877343	1938103	2400261	5800024	1928706	1944051	1958314	1935106
1935036	5877352	2423302	2422000	1936200	5800370	1958380	2409224
1928249	5877351	2419000	5871333	1958354	1957000	2408281	2400259
5871343	1928710	2400263	1958300	2419370	2422223	2422264	5883387
1935230	1928699	5871334	2422204	5871357	1958478	2419342	1958343
2408297	5871104	1900472	1928702	2423301	2421109	2421103	2424273
2417102	2418106	1928000	2400291	2421107	2419017	2408270	1900000
2422270	1934108	1928236	5871044	2422267	5883363	2423000	2424106
2424266	1934701	2417105	1958305	1934734	2422217	1935203	1935247
2419340	2421000	1931725	5800301	2417000	1958360	5883370	5883201
1934736	1958365	2421105	2418103	2423317	1934730	1928741	1935248
2424325	1958312	5874340	2408284	1936243	2423316	1958346	1957012
1934242	1931000	1934240	5894203	2419343	1900103	2422199	2424104
1931254	5871320	2422198	2422213	1931236	1900062	1958105	1935252
1928730	1900090	1900712	2420105	1934725	1928707	1934105	5896545E
1930708	2408041	1928258	5871322	2424277	1934214	2408055	1958329
1928718	1938410	5874343	1928708	2418301	1958391	1934756	1900066
1931102	1958336	5800372J	1930696	2408040	2418102	1958308	2422219
1934737	5877078	2422036	1934228	2421101	2418105	5871106	1934106

1928740	2420315	5884000	2408109	5877080	1900985	2408283	1958357
2408273	2424280	1934234	1934720	5897000	2422218	2422281	2400050
5883376	2422203	1934758	1934743	1930023	1934013	1958000	5800500A
2417269	5898511	5883368	5896545F	2422210	1930681	2408274	1958380

Cedar Creek Fire Closure Exhibit C
Closure Number 06-18-10-22-24
Willamette National Forest

Closed Forest System Trails:

3553	ATV-43104AMC	2000	3674	3677
3553.2	4338	4383	3572	3568
3583	ATV-43104MC	4364	ATV-43107	3576
3586	ATV-4381	3580	ATV-43105A	3559
3587	ATV-43101	3666.5	3560	3591
3558	ATV-43200	3690	ATV-4380	ATV-43108A
14	3525	ATV-43202	SNO-4385	3585
3674	3537	3664	SNO-3586	SNO-3677.1
3570	3525.1	ATV-43203	ATV-43103	3584
ATV-43100	3320	ATV-43303MC	SNO-4382	3663
3590	3510	SNO-3689.2	SNO-3674.1	SNO-3689
SNO-4369	SNO-3681	3590.1A	3593	3692
3565	2000	SNO-4371	3674	ATV-43105
3675	ATV-43201	ATV-43300	3523	3327
SNO-4386.1	3590.1	3567	SNO-4370	3681
3563	3589	3312	3307	ATV-43106
3595	SNO-3601.1	3323	3529	ATV-43108MC
3571	3573	SNO-3687	3577	3518
3575	3674	3578	SNO-4383	SNO-3689.1
3582	ATV-43300A	3551	3526	3590.2
3581	ATV-43302C	3552	3592	ATV-43102
SNO-3674	ATV-43303J	SNO-4392	SNO-3682	SNO-3674.2
ATV-43108B	3686	19.1	4386.1	ATV-43301
ATV-43102A	ATV-43109	3573.1	4364.1	SNO-3677
3542	ATV-43108C	3573a	3597	3331
SNO-4368	3538	3674	3597.1	3660
SNO-3600	3689	4390	3555	3588
ATV-43302MC	ATV-43201A	3682	ATV-43108	3579
ATV-43304	SNO-2000.2	3594	ATV-43200A	3596

Closed NFS Campgrounds and Rec Sites:

SITE_NAME	SITE_TYPE	SITE_NAME	SITE_TYPE
TWINS PEAK	TRAILHEAD	SHALE RIDGE (SOUTH)	TRAILHEAD
ERMA BELL	TRAILHEAD	SPRING PRAIRIE SHELTER	LOOKOUT/CABIN
RHODODENDRON ISLAND	DAY USE AREA	FRISSELL BOATING	BOATING SITE
MT. RAY	TRAILHEAD	BOX CANYON GUARD STATION	LOOKOUT/CABIN
OWL CABINWAY WAY	TRAILHEAD	NORTH WALDO CAMPGROUND	CAMPGROUND
ELK CREEK TRAILHEAD	TRAILHEAD	TORREY LAKE	TRAILHEAD
ROARING RIDGE TRAILHEAD (LOWER)	TRAILHEAD	SPIRIT LAKE	TRAILHEAD
EUGENE TO CREST (AUBREY MOUNTAIN)	TRAILHEAD	SHALE RIDGE (NORTH)	TRAILHEAD
HELEN LAKE	TRAILHEAD	WARM SPRINGS	TRAILHEAD
GOLD LAKE TRAILHEAD	TRAILHEAD	GOLD LAKE CAMPGROUND	CAMPGROUND

VERDUN	TRAILHEAD	ISLET CAMPGROUND	CAMPGROUND
WINCHESTER	TRAILHEAD	SKOOKUM CREEK	CAMPGROUND
HUCKLEBERRY LOOKOUT	TRAILHEAD	BLAIR LAKE CAMPGROUND	CAMPGROUND
GANDER LAKES	TRAILHEAD	SHADOW BAY CAMPGROUND	CAMPGROUND
SHADOW BAY BOAT LAUNCH	BOATING SITE	WALDO SNO-PARK	SNOWPARK
SOUTH WALDO SHELTER	LOOKOUT/CABIN	SALMON LAKES	TRAILHEAD
GOLD LAKE SHELTER	LOOKOUT/CABIN	FIELDS LAKE	TRAILHEAD
LANDIS CABIN	INTERPRETIVE SITE	BETTY LAKE	TRAILHEAD
SOUTH FORK	TRAILHEAD	BOBBY LAKE	TRAILHEAD
ROARING RIDGE TRAILHEAD (UPPER)	TRAILHEAD	MAIDEN PEAK TRAILHEAD	TRAILHEAD
FRISSELL CROSSING TRAILHEAD	TRAILHEAD	TAYLOR BURN TRAILHEAD	TRAILHEAD
CROSSING WAY	TRAILHEAD	TAYLOR BURN CAMPGROUND	CAMPGROUND
FUJI MOUNTAIN (LOWER)	TRAILHEAD	MAIDEN PEAK CABIN	LOOKOUT/CABIN
FUJI SHELTER	LOOKOUT/CABIN	DIAMOND PEAK VISTA POINT	INTERPRETIVE SITE
BLAIR LAKE TRAILHEAD (EAST)	TRAILHEAD	CONSTITUTION GROVE	INTERPRETIVE SITE
BLAIR LAKE TRAILHEAD (WEST)	TRAILHEAD	JOE GODDARD'S NATURE TRAIL	INTERPRETIVE SITE
HUCKLEBERRY LAKE	TRAILHEAD	ISLET BOAT LAUNCH	BOATING SITE
FISHER CREEK	TRAILHEAD	NORTH WALDO BOAT LAUNCH	BOATING SITE
GOLD LAKE BOAT LAUNCH	BOATING SITE	KOCH MOUNTAIN (WEST)	TRAILHEAD
MARILYN LAKES	TRAILHEAD	BLACK CREEK (WEST)	TRAILHEAD
NORTH FORK (ROAD 1944)	TRAILHEAD	BIG BUNCHGRASS	TRAILHEAD
NORTH FORK (SHALE RIDGE)	TRAILHEAD	SWAN LAKE	TRAILHEAD
WAHANNA	TRAILHEAD	HUCKLEBERRY FLATS	OHV STAGING AREA
RIGDON LAKES	TRAILHEAD	FUJI MOUNTAIN (UPPER)	TRAILHEAD
SIX LAKES	TRAILHEAD	SOUTH WALDO (NORTH)	TRAILHEAD
WALDO MEADOWS	TRAILHEAD	SOUTH WALDO (SOUTH)	TRAILHEAD
WALDO MOUNTAIN	TRAILHEAD	BLACK CREEK (EAST)	TRAILHEAD