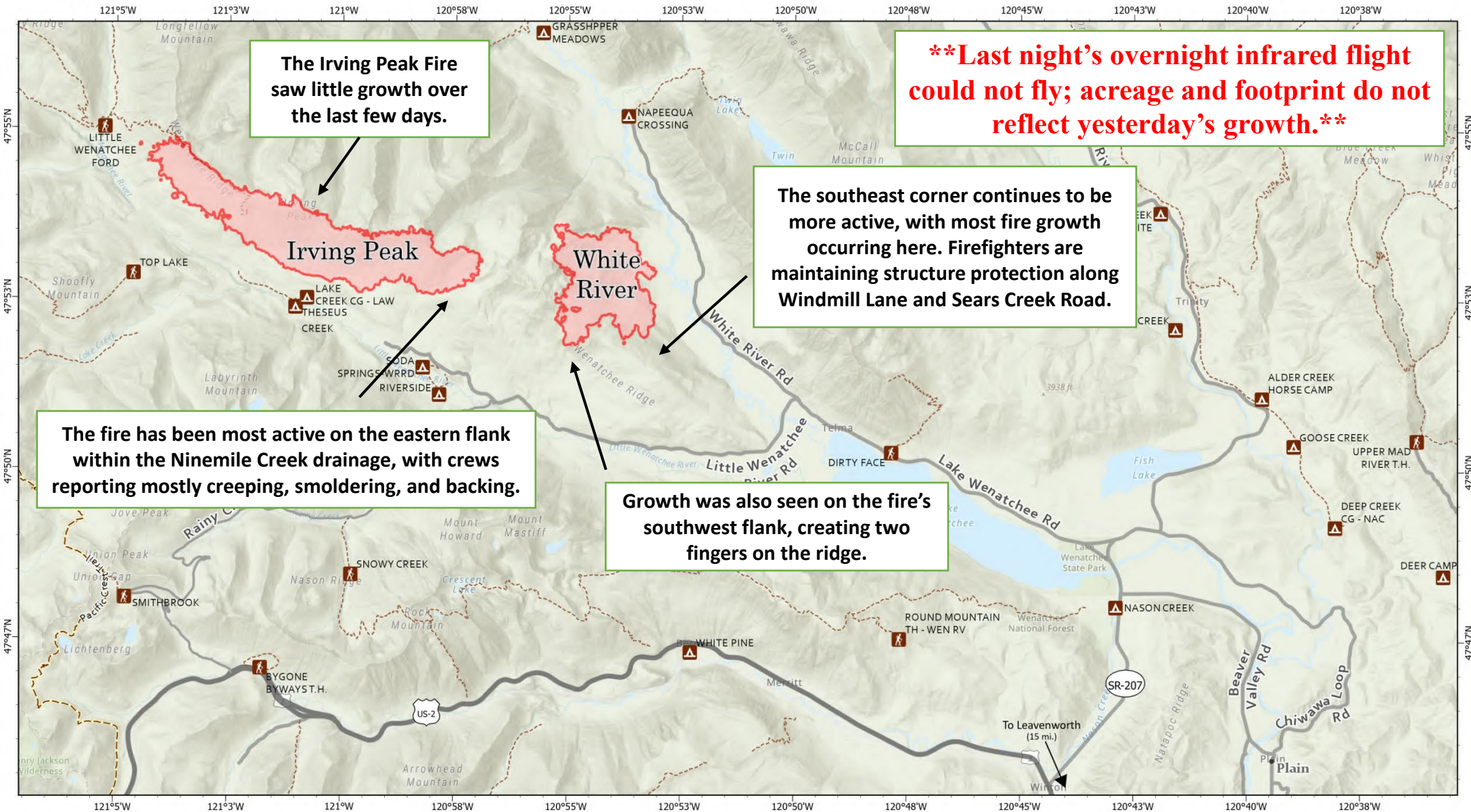


Fire Information



The Irving Peak Fire saw little growth over the last few days.

****Last night's overnight infrared flight could not fly; acreage and footprint do not reflect yesterday's growth.****

The southeast corner continues to be more active, with most fire growth occurring here. Firefighters are maintaining structure protection along Windmill Lane and Sears Creek Road.

The fire has been most active on the eastern flank within the Ninemile Creek drainage, with crews reporting mostly creeping, smoldering, and backing.

Growth was also seen on the fire's southwest flank, creating two fingers on the ridge.

White River
 WA-OWF-000319
 1522 acres
 Acres as of 09/05/2022 2134
 Map Updated: 9/6/2022

Irving Peak
 WA-OWF-000315
 3018 acres

- Interstate or US Highway
- State Highway or Major Arterial Collector
- Arterial or Collector
- - - Trail
- ▲ Campground
- ⛶ Trailhead
- Pacific Crest Trail

