

**UNITED STATES DEPARTMENT OF AGRICULTURE FOREST
SERVICE
PAYETTE NATIONAL FOREST KRASSEL
RANGER DISTRICT**

DISMAL & PATROL POINT--AREA AND TRAIL CLOSURE
Public Health & Safety

PROHIBITIONS:

Pursuant to 16 U.S.C. § 551 and 36 CFR 261.50 (a) and (b), the following acts are prohibited on the National Forest System (NFS) lands and trails in the Krassel Ranger District, Payette National Forest, described below and shown on the attached map incorporated into this Order as Exhibit A (the “Described Area” and “Described Trails”):

1. Going into or being upon the Described Area. **36 CFR 261.53(e)**
2. Being on the Described Trails. 36 CFR 261.55(a)

EXEMPTIONS:

Pursuant to 36 CFR 261.50(e), the following persons are exempt from this Order:

1. Persons with a special use authorization or other Forest Service authorization specifically exempting them from the effect of this Order.
2. Any Federal, State, or local officer, or member of an organized rescue or fire fighting force in the performance of an official duty.
3. Federal or State administrative personnel in the performance of an official duty.

DESCRIBED AREA AND TRAILS:

Described Area: The Described Area is the NFS lands within the following boundaries:

- Beginning at the Cold Meadows Guard Station in Section 35, Township 23 North, Range 12 East;
- Continuing east along the NFS Trail (NFST) # 041, Cottonwood Creek, until its junction with NFST #044 Coyote Spring/Cow Creek in Section 6, Township 22 North, Range 13 East;
- Continuing along NFST #041 Cottonwood Creek north, northeast to its junction with NFST #238, Black Lake in Section 21, Township 23 North, Range 13 East;
- Continuing along NFST #238, Black Lake, to the confluence of Cottonwood Creek and Mirage Creek in Section 15, Township 23 North, Range 13 East;
- Continuing north along Mirage Creek to its junction with NFST #041 Cottonwood Creek in Section 9, Township 23 North, Range 13 East;
- Continuing north following NFST #040, Runaway Ridge, to the section line between Section 28 and Section 33, Township 24 North, Range 13 East, where the trail turns northwest;
- Continuing Northeast along Otter Creek to its confluence with the Salmon River in Section 22, Township 24 North, Range 13 East;
- Continuing West along the Salmon River to the Confluence of the Salmon River and Bear Creek in Section 27, Township 25 North, Range 12 East;
- Continuing Southwest along Bear Creek to the intersection of Bear Creek and the North South Section line between Section 5 and Section 6, Township 23 North, Range 12 East;
- Continuing South along the North-South Section line to the junction with NFST #035, Whimstick Creek, between Section 18 and section 17, Township 23 North, Range 12 East;
- Continuing south along NFST #035, Whimstick Creek to the private lands in Section 19, Township 23

ORDER NUMBER: 0412-574

North, Range 12 East;

- Continuing South along the East boundary of the private lands in Section 19, 20, and 30 to the junction of private lands and NFST #10 Sliver Creek in section 30 Township 23 North Range 12 East;
- Continuing south along NFST #010 Sliver Creek, to the confluence of Whimstick Creek and the East Fork of Whimstick Creek Section 30, Township 23 North, Range 12 East;
- Continuing East along the East Fork of Whimstick Creek;
- Ending at the Cold Meadows Guard Station in Section 35, Township 23 North, Range 12 East.

Described Closed Trails:

- NFST #002 Cold Meadows, 8.8 miles
- NFST # 007 McCalla Creek, 6.0 miles
- NFST #033 Chamberlain Creek, 9.4 miles
- NFST #035 Whimstick Creek, 6.5 miles
- NFST #037 Starvation Creek, 5.6 miles
- NFST #038 Grass Mountain, 17.7 miles
- NFST #039 Disappointment Creek, 10.2 miles
- NFST #040 Runaway Ridge, 19.2 miles
- NFST #041 Cottonwood Creek, 10.1 miles
- NFST #042 Farrow Mountain, .24 miles
- NFST #208 Devil's Toe, 7 miles

PURPOSE:

The purpose of this Order is to protect public safety from the effects of the Dismal Fire and prevent interference with fire suppression and response operations. This order excludes any and all campsites associated with the Wild and Scenic River corridor in order to ensure the free flow of people and materials through the river corridor.

IMPLEMENTATION:

1. This Order will be in effect on September 7, 2022 at 18:00 and shall remain in effect until October 31, 2022 at 00:01 AM MST.
2. A map identifying the Described Area and Described Trails is attached to and made part of this Order.
3. This Order supersedes any previous orders for prohibiting the same or similar activities in the Described Area or on the Described Trails.
4. A violation of these prohibitions is punishable by a fine of not more than \$5,000 for an individual or \$10,000 for an organization, imprisonment for not more than six months, or both. (16 U.S.C. § 551 and 18 U.S.C. §§ 3559, 3571, and 3581).
5. Further information regarding this Order is available at the Krassel Ranger District Office, McCall, ID, (208) 634-0600, and Payette National Forest Supervisor's Office, McCall, ID, (208) 634-0700.

Done at McCall, Idaho this _____ day of September 2022

Linda Jackson
Forest Supervisor
Payette National Forest

Assessment of Need and Enforcement Plan
Krassel Ranger District, Payette National Forest

1. **Background:** The area described in the above closure order has been modified to include a larger area due to a second naturally occurring fire starting and being allowed to play its natural role in the Frank Church-River of No Return Wilderness. The Dismal Fire was the original fire that the closure order was deemed necessary for and with the addition of the second fire near the area and the increased values at risk there is a new need to enlarge the closure area to ensure fire fighting operations associated with identified values at risk and any potential suppression actions can be conducted without interference or incident involving members of the public.
2. **Intent of Subpart B order:** This temporary closure is for public access to the Areas listed above in order to provide for public safety by discouraging discretionary travel to the area based on concerns related to fire fighter safety and public safety.
3. **Enforcement Plan:** Signing has been installed at the entrance to each Area to advise the public of the closure. Ongoing maintenance of the signs will occur until the closure is rescinded. Signing will be placed appropriately to notify the public of the closure. Forest Service personnel will make compliance contacts as needed.

<u>Action</u>	<u>Responsible Official</u>	<u>Date</u>
Prepare proposed order	Appropriate staff with LEI input	08/24/2022
Review proposed order	Supervisory LEO	08/24/2022
Review proposed order	RO LE&I / OGC	08/24/2022
News Release	District Ranger/PAO	As needed
Educational and compliance contacts	Appropriate staff/ LEO/FPOs	Ongoing

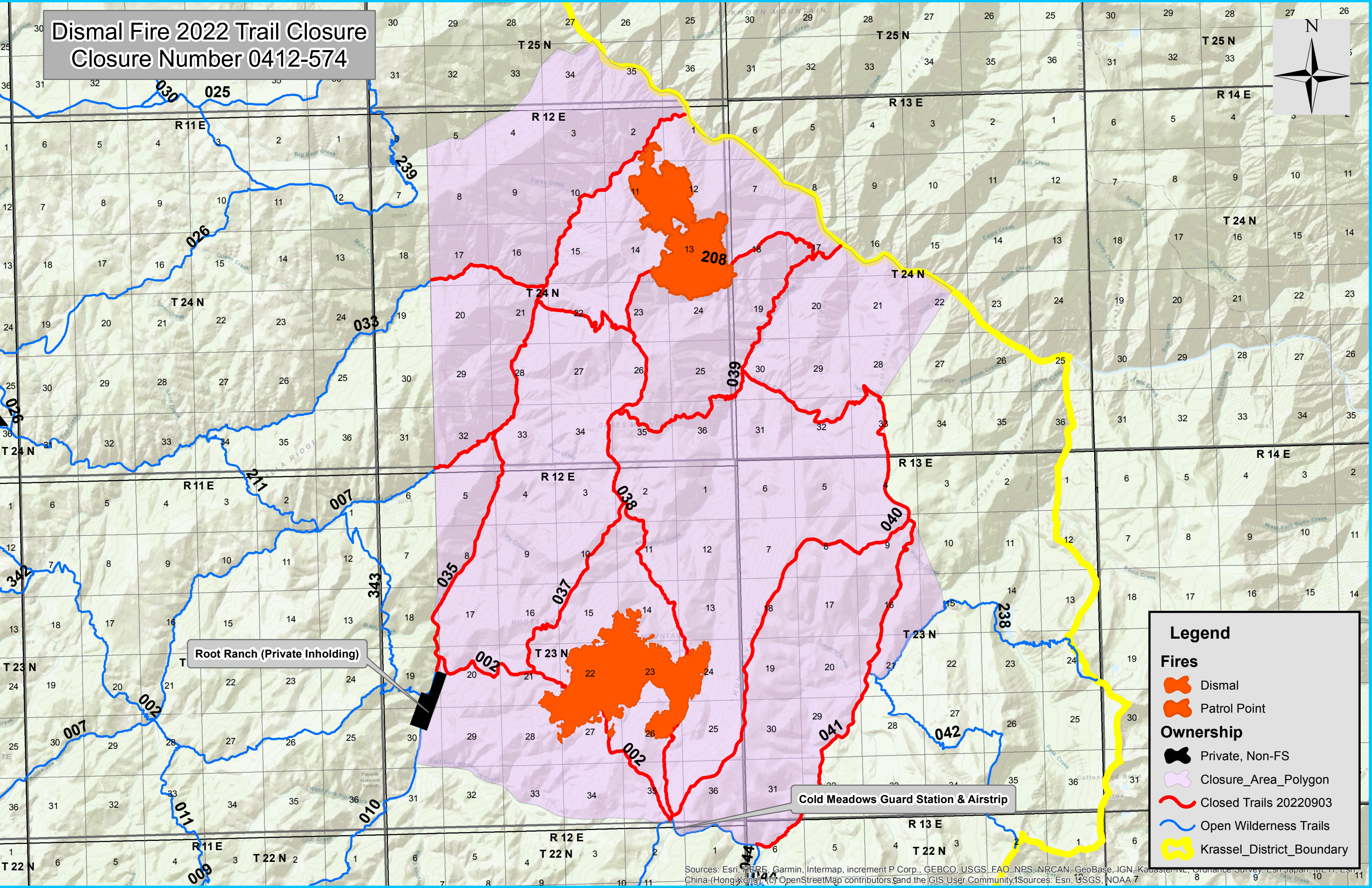
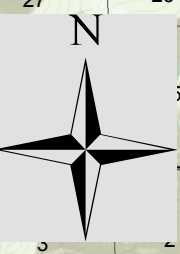
Plan approved for implementation:

LINDA L. JACKSON
Forest Supervisor
Payette National Forest

DATE

Dismal Fire 2022 Trail Closure

Closure Number 0412-574



Legend

- Fires**
 - Dismal
 - Patrol Point
- Ownership**
 - Private, Non-FS
 - Closure_Area_Polygon
 - Closed Trails 20220903
 - Open Wilderness Trails
 - Krasel_District_Boundary

Sources: Esri, HERE, Garmin, Intermap, increment P Corp., GEBCO, USGS, FAO, NPS, NRCAN, GeoBase, IGN, Kabaster, NLS, Ordnance Survey, Esri Japan, METI, Esri China (Hong Kong), (c) OpenStreetMap contributors, and the GIS User Community