

**Order Number: # 01-04-07-22-001**



**U.S. Department of Agriculture, U.S. Forest Service  
Idaho Panhandle National Forest  
Bonners Ferry Ranger District**

**Kootenai River Complex Road and Trail Closure**

**PROHIBITIONS**

Pursuant to 16 U.S.C. § 551 and 36 C.F.R. § 261.50 (b), the following are prohibited on the Bonners Ferry Ranger District of the Idaho Panhandle National Forests, described below and shown on the attached map incorporated into this Order as Exhibit A (the "Described Roads and Trails"):

1. Being on the Road [36 CFR § 261.54(e)]
2. Being on the Trail [36 CFR § 261.55(a)]

**EXEMPTIONS**

Pursuant to 36 C.F.R. § 261.50(e), the following persons are exempt from this Order:

1. Persons with a special use authorization or other Forest Service authorization specifically exempting them from the effect of this order. 36 CFR § 261.50 (e)(1)
2. Any Federal, State, or Local Officer, or member of an organized rescue or firefighting resource in the performance of an official duty. 36 CFR § 261.50 (e)(4).

**DESCRIBED ROADS/TRAILS**

The entirety of the Ball Creek Road (FSR 432) and the Trout Creek Road (FSR 634). Also, the Russell Mountain Trail (No. 12), Russell Ridge Trail (No. 92), Ball & Pyramid Lakes Trail (No. 43), Pyramid Pass Trail (No. 13), Pyramid Peak Trail (No. 7), Fisher Peak Trail (No. 27), Myrtle Peak Trail (No. 286), Burton Peak Trail (No. 9), Trout Lake Trail (No. 41), McGinty Ridge Trail (No. 143) and Clifty Trail (No. 182).

## **PURPOSE**

The purpose of this Closure Order is for public safety due to wildfire effects and activities on the Kootenai River Complex, on the Bonners Ferry Ranger District. The closure prohibits all methods of travel (foot, mechanized, motorized, and stock) on the closed roads and closed trails (see map).

## **IMPLEMENTATION**

1. This Order shall be in effect from September 6, 2022, through December 3, 2022, unless rescinded.
2. A map identifying the Described Roads/Trails is attached and made part of this Order as Exhibit A. For a digital version of this Order and Exhibit A, go to [https://www.fs.usda.gov/alerts/\\_/alerts-notice](https://www.fs.usda.gov/alerts/_/alerts-notice).
3. Unless otherwise expressly defined in this Order, the terms used in this Order are defined by the regulations of the Secretary of Agriculture, 36 C.F.R. Chapter II, Parts 200-299. If there are terms in this Order that are not expressly defined in the Order or 36 C.F.R. Chapter II, Parts 200-299, their meaning shall be determined by their plain language definitions.
4. A violation of the above prohibitions is punishable as a Class B misdemeanor by a fine of not more than \$5,000 for individuals and \$10,000 for organizations, or by imprisonment for not more than six months, or both. 16 U.S.C. § 551; 18 U.S.C. §§ 3559, 3571, and 3581.
5. Contact the Bonners Ferry Ranger District in Bonners Ferry Idaho at (208) 267-5561, and the Idaho Panhandle National Forests Supervisor's Office in Coeur d'Alene Idaho (208) 765-7723, for more information about this Order.
6. This Order supersedes any previous Orders prohibiting the same or similar acts on the same Described Road/Trail.

Signed and issued on September 6, 2022.

---

Forest Supervisor  
Idaho Panhandle National Forests



# Idaho Panhandle National Forests



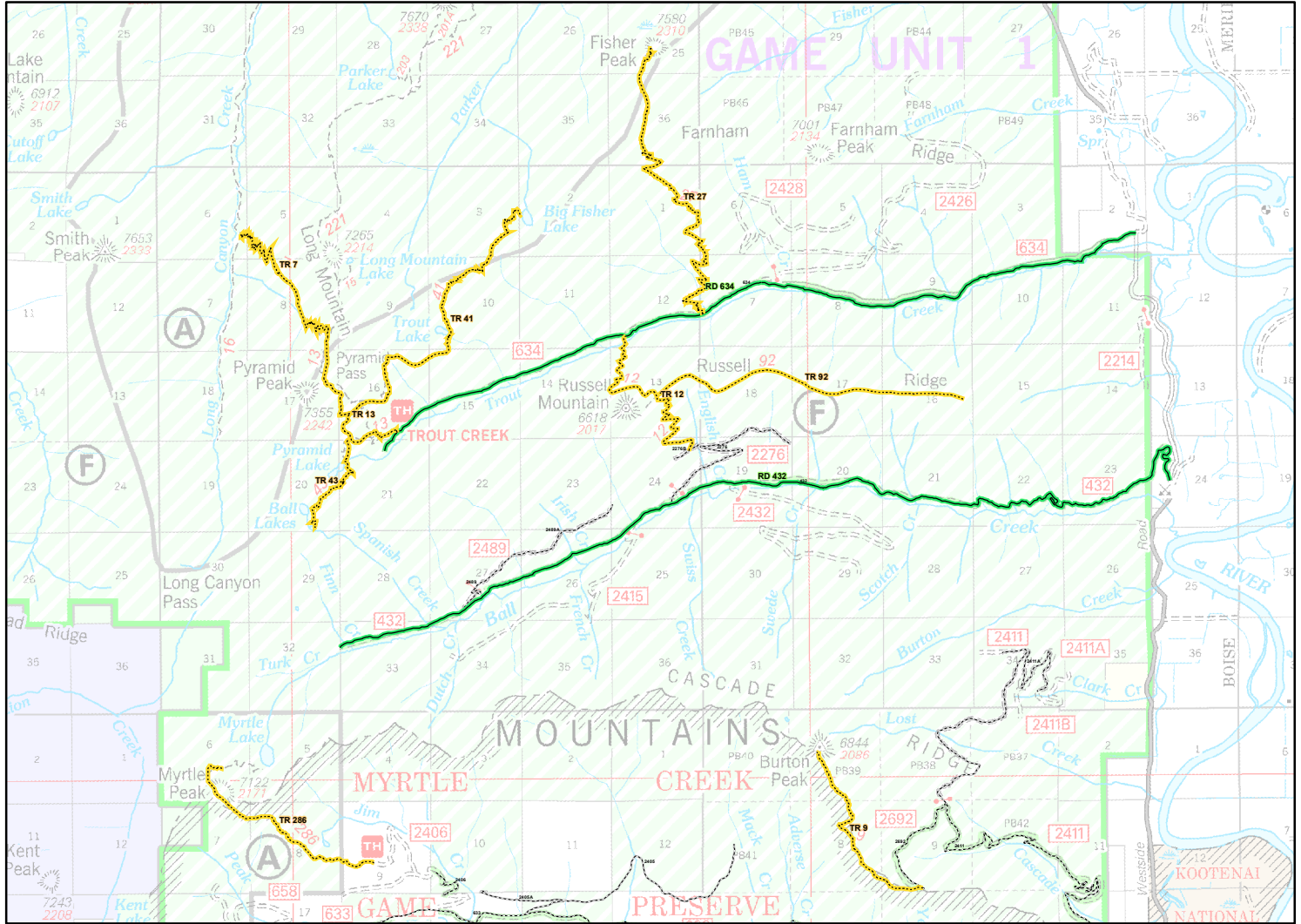
## Forest Closure: Kootenai River Complex

Order Number: 01-04-07-22-001

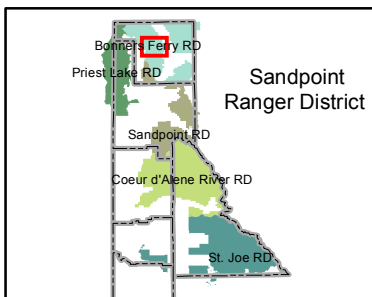
Effective Date : 6 Sep 2022

Rescind Date : 3 Dec 2022

### Exhibit A - Page 1



### IDAHO BOUNDARY COUNTY



### Closed Route Numbers

Rd 634, Rd 432  
 Tr 12, Tr 92, Tr 43, Tr 13  
 Tr 27, Tr 41, Tr 143, Tr 182  
 Tr 7, Tr 286, Tr 9

### Closures

Road

Trail

### Open Routes

Roads Open, Yearlong

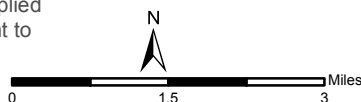
Roads Open, Seasonal

Trails Open, Yearlong

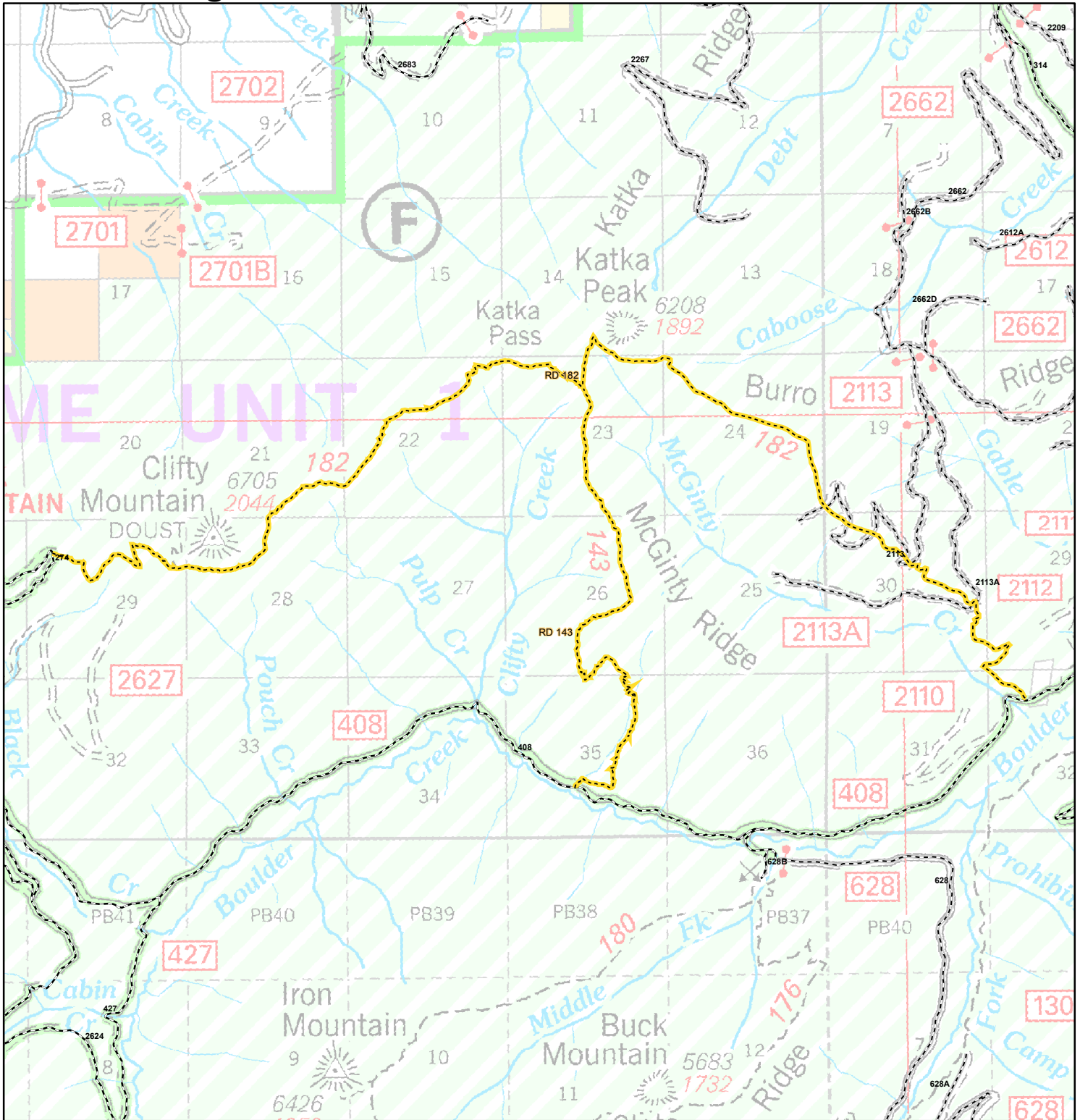
Trails Open, Seasonal

### Disclaimer

The USDA Forest Service makes no warranty, expressed or implied regarding the data displayed on this map, and reserves the right to correct, update, modify, or replace this information without notification.



## Exhibit A Page 2



### Forest Closure: Kootenai River Complex

Order Number: 01-04-07-22-001

#### Closures

Road

Trail

#### Open Routes

Roads Open, Yearlong

Roads Open, Seasonal

Trails Open, Yearlong

Trails Open, Seasonal

#### Disclaimer

The USDA Forest Service makes no warranty, expressed or implied regarding the data displayed on this map, and reserves the right to correct, update, modify, or replace this information without notification.

