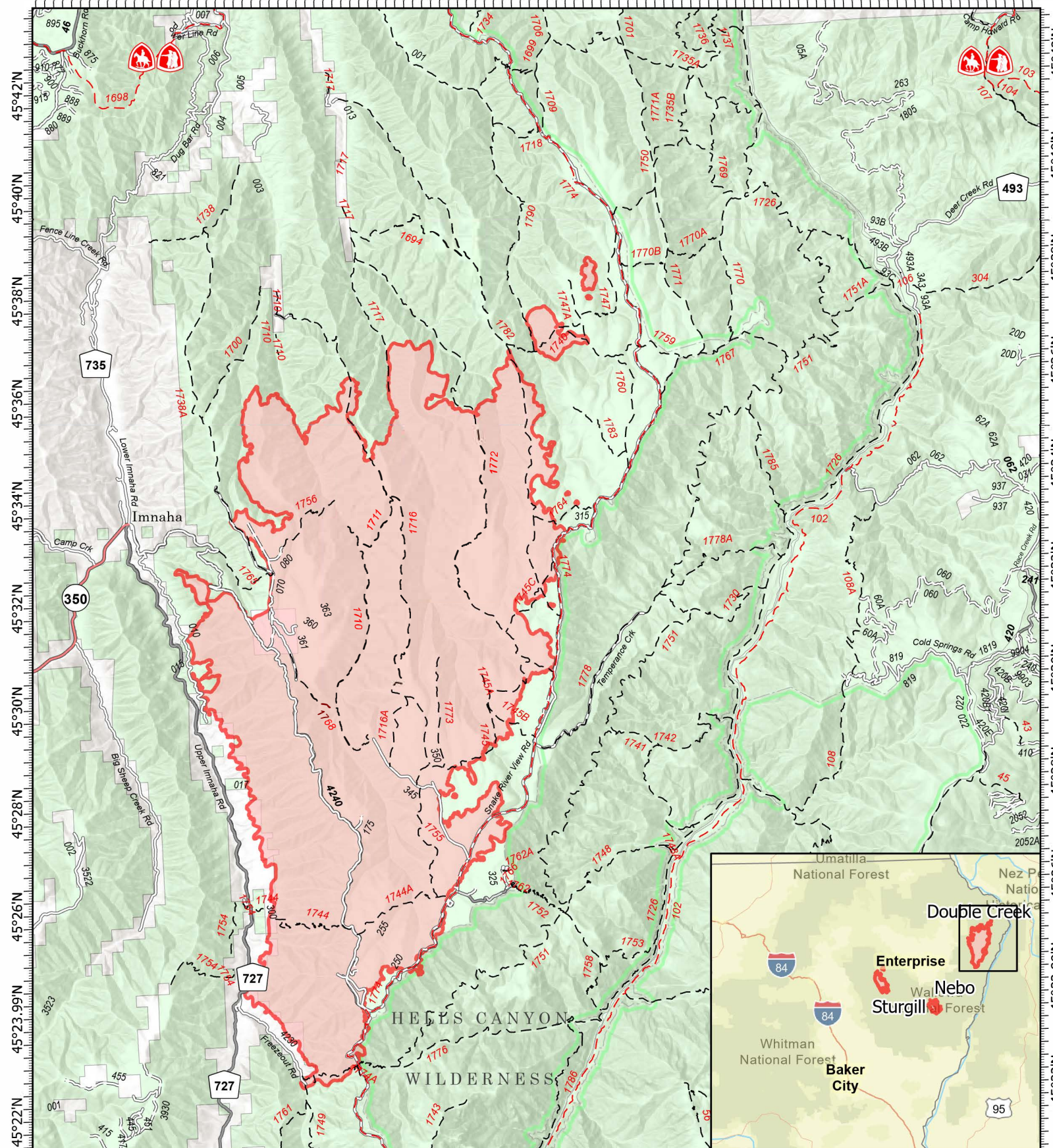


116°52'W 116°50'W 116°48'W 116°46'W 116°44'W 116°42'W 116°40'W 116°38'W 116°36.01'W 116°34'W 116°32'W 116°30'W 116°28'W 116°26'W



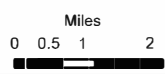
116°52'W 116°50'W 116°48'W 116°46'W 116°44'W 116°42'W 116°40'W 116°38'W 116°36.01'W 116°34'W 116°32'W 116°30'W 116°28'W 116°26'W

Public Information

Double Creek
OR-WWF-000400
09/06/22

53,539 acres at 9/05/22 1900

- ▬ Wildfire Daily Fire Perimeter
- - - National_Trails
- - - Trail
- - - National Designated Trail
- - - National Designated Trail
- ▬ Paved Road
- ▬ Gravel Road
- ▬ Dirt Roads
- ▬ Unimproved Roads
- ▬ FS Wilderness Boundary
- ▬ Forest Service Land



9/5/2022 2120
Acres from IR
North American 1983 Datum.
Lat,Long Grid