

Order Number: # 01-14-07-22-09



**U.S. Department of Agriculture, U.S. Forest Service
Kootenai National Forest
Cabinet Ranger District**

Road and Trail Closure

PROHIBITIONS

Pursuant to 16 U.S.C. § 551 and 36 C.F.R. § 261.50(b), the following is prohibited on the National Forest System (NFS) roads or trails in the Cabinet Ranger District, Kootenai National Forest, described below and shown on the attached map incorporated into this Order as Exhibit A:

1. It is prohibited to be upon any road or trail which is closed for the protection of: Public health or safety. 36 C.F.R. § 261.53(e).]

EXEMPTIONS

Pursuant to 36 C.F.R. § 261.50(e), the following persons are exempt from this Order:

1. Persons with Forest Service Permit No. FS-7700-48 (Permit for Use of Roads, Trails, or Areas Restricted by Regulation or Order), specifically exempting them from this Order or a written determination by a Forest Service authorized officer that a permit is not required under 36 C.F.R. § 251.50(e)(1) or (2).
2. Any Federal, State, or Local Officer, or member of an organized rescue or firefighting resource in the performance of an official duty.

DESCRIBED ROAD

As depicted on the map attached as Exhibit A and hereby incorporated into this Order, National Forest System (NFS) Road 407A and NFS Trail 646 (St. Paul Lake Trail), including the Trailhead for NFS Trail 646. All closures are in the EF Bull River basin, north of Noxon, Montana.

PURPOSE

The purpose of this Order is to provide for public and firefighter safety due to fire

suppression activities and risk associated with the *Isabella Lake Fire*.

IMPLEMENTATION

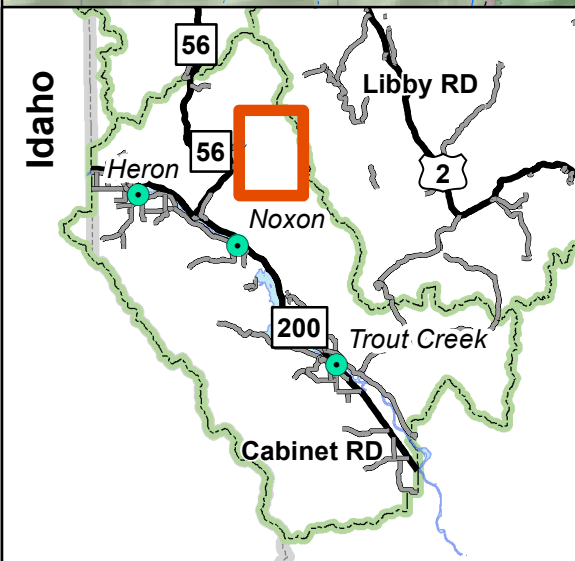
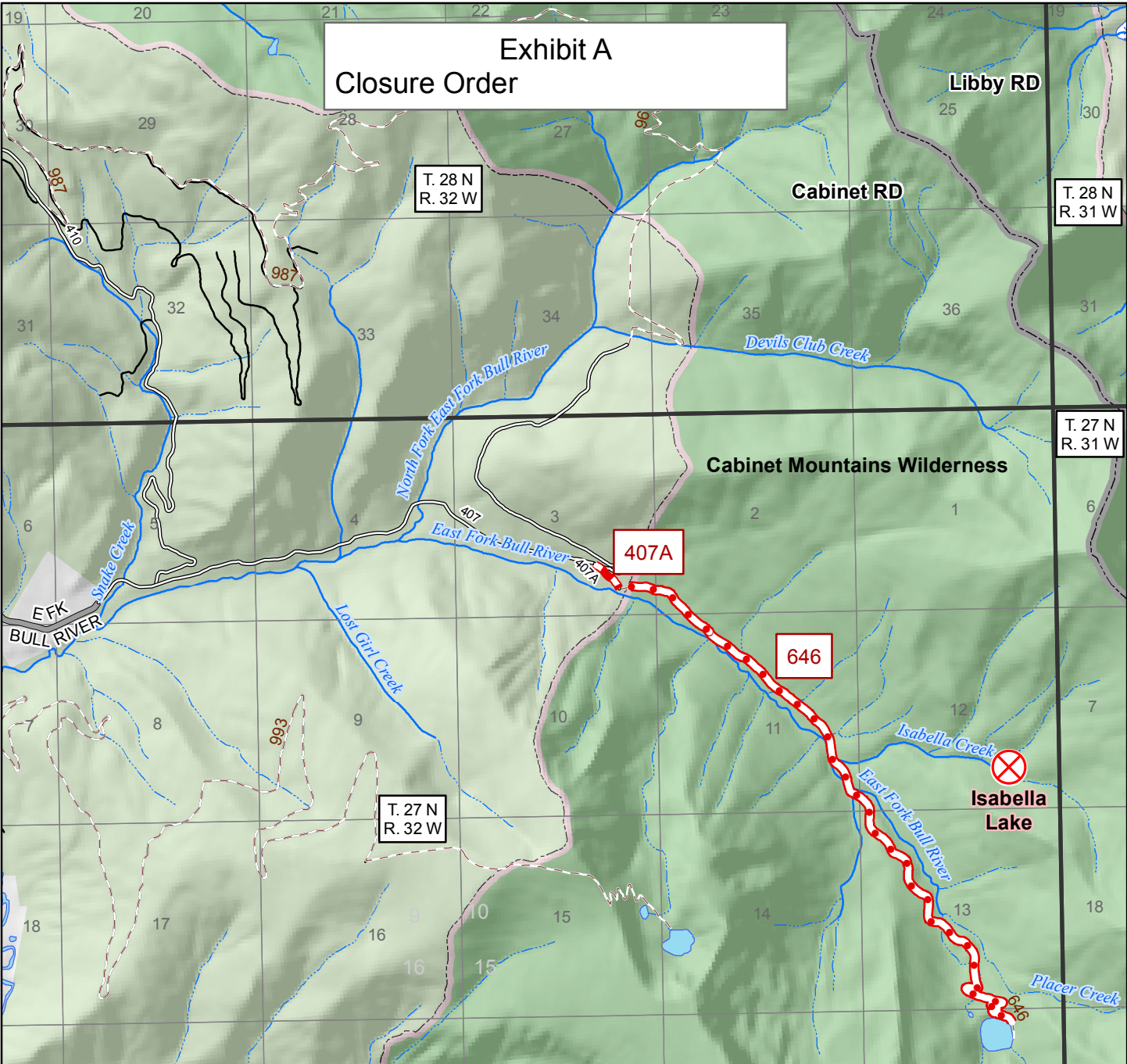
1. This Order shall be in effect from September 3rd, 2022 at 0600 through December 31, 2022 at 1800, unless rescinded.
2. A map identifying the Described Roads and Trail is attached and made part of this Order as Exhibit A. For a digital version of this Order and Exhibit A, go to <https://www.fs.usda.gov/kootenai>.
3. Unless otherwise expressly defined in this Order, the terms used in this Order are defined by the regulations of the Secretary of Agriculture, 36 C.F.R. Chapter II, Parts 200-299. If there are terms in this Order that are not expressly defined in the Order or 36 C.F.R. Chapter II, Parts 200-299, their meaning shall be determined by their plain language definitions.
4. A violation of the above prohibitions is punishable as a Class B misdemeanor by a fine of not more than \$5,000 for individuals and \$10,000 for organizations, or by imprisonment for not more than six months, or both. 16 U.S.C. § 551; 18 U.S.C. §§ 3559, 3571, and 3581.
5. Contact the Cabinet Ranger District in Trout Creek, MT, (406) 827-3533, and Kootenai National Forest Supervisor's Office in Libby, MT, (406) 293-6211, for more information about this Order.
6. This Order supersedes any previous Orders prohibiting the same or similar acts on the same Described Road.

Signed and issued on 9/15/22



Chad W. Benson
Forest Supervisor
Kootenai National Forest

Exhibit A Closure Order



- Fire Location
- Road Closure
- Trail Closure
- Area Closure

MVUM Legend

- Open FS Roads (All Vehicles)
- Open FS Roads (Highway Legal)
- Open FS Roads (Seasonal Restrictions)
- Other Public Roads
- Major Highways

0 0.5 1 1.5
Miles