



## Sawtell Peak Fire

### Sunday September 4, 2022 – 9:00 a.m.

Fire Information Phone: 208-339-9626

Email: [2022.sawtellpeak@firenet.gov](mailto:2022.sawtellpeak@firenet.gov)

**Summary:** The Sawtell Peak fire is under the command of Wyoming Type 3 Team 5. The Sawtell Peak Fire is currently 34 acres with 5 % containment and 143 personnel assigned to the incident.

**Yesterday:** Good progress was made, and the fire saw very little growth, however the fire has burned spotty and there are still interior fuel sources. Firefighters constructed an extensive hose lay around both the main fire and large spot fire to the north. The fire behavior was described as moderate, with some spotting and tree torching.

**Today:** Firefighters will continue to hold, secure and improve firelines. We will continue to identify and control spot fires. Aerial resources and a hose lay will be used to get water where it is needed on the ground. The structure protection group is starting to gather information to build a comprehensive structure map as a contingency. These proactive management tools are used to protect communities and other values from fire if the need should arise.

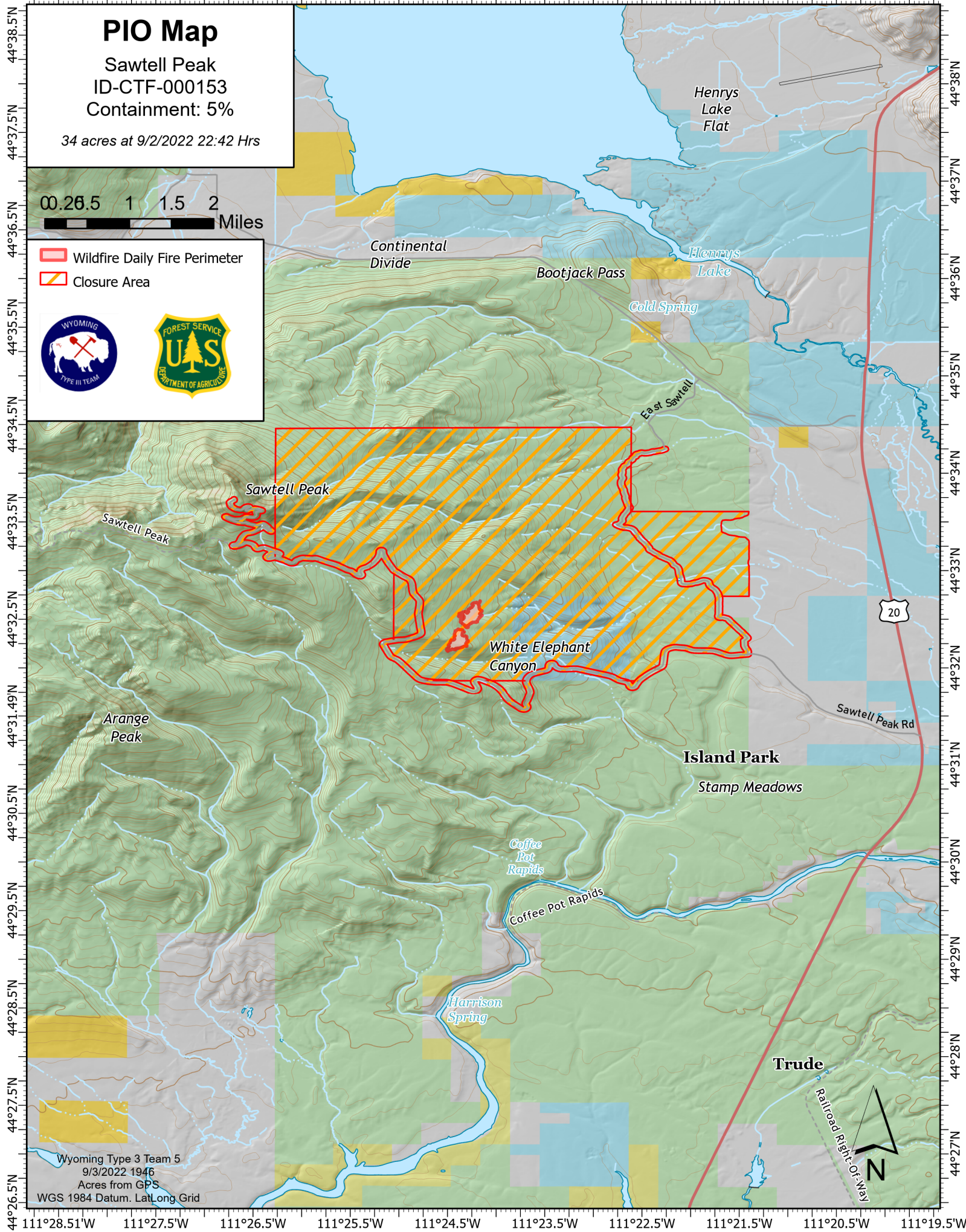
**Weather:** A red flag warning has been issued for today due to low humidity and gusty winds. The fire area will continue to see record heat and very dry conditions. The probability of finding additional spot fires is likely.

**Closure Order:** A Forest Closure Order was issued to protect public health and safety from the effects of the Sawtell Peak Fire. The area closure includes all National Forest System (NFS) land within the closed area depicted on the attached map, and Forest Website.

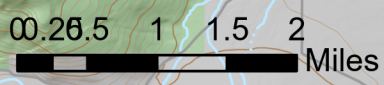
**Safety Message:** With the holiday weekend and events planned for Island Park expect increased traffic and congestion along with fire traffic. Please be mindful of fire operations and adhere to closures to the Sawtell area. Remember, if you fly we can't, please use drones responsibly and stay away from fire area. A temporary flight restriction is in place, NOTAM 2/1209.

Quick Facts	
<b>Fire Location</b>	¼ mile from Sawtell Peak along FS Road 24 on the Ashton/Island Park Ranger District.
<b>Approximate Acreage</b>	34 Acres, decrease in acreage due to more accurate mapping.
<b>Containment</b>	5%
<b>Structures Threatened</b>	Communications Infrastructure
<b>Start Date</b>	8/31/2022
<b>Cause</b>	Lightning
<b>Incident Commander</b>	Wyoming Type 3 Team 5
<b>Fire Resources</b>	143 Personnel which includes, 4 crews, 6 engines, 3 helicopters, , 4 scoopers, and 2 water tenders
Fire Information	
<b>Forest Website:</b>	<a href="https://www.fs.usda.gov/ctnf">https://www.fs.usda.gov/ctnf</a>
<b>Facebook:</b>	<a href="https://www.facebook.com/USFSCaribouTarghee">@USFSCaribouTarghee</a>
<b>Twitter:</b>	<a href="https://twitter.com/Caribou_Targhee">@Caribou_Targhee</a>

111°28.51'W 111°27.5'W 111°26.5'W 111°25.5'W 111°24.5'W 111°23.5'W 111°22.5'W 111°21.5'W 111°20.5'W 111°19.5'W



**PIO Map**  
Sawtell Peak  
ID-CTF-000153  
Containment: 5%  
34 acres at 9/2/2022 22:42 Hrs



Wildfire Daily Fire Perimeter  
Closure Area



111°28.51'W 111°27.5'W 111°26.5'W 111°25.5'W 111°24.5'W 111°23.5'W 111°22.5'W 111°21.5'W 111°20.5'W 111°19.5'W

Wyoming Type 3 Team 5  
9/3/2022 1946  
Acres from GPS  
WGS 1984 Datum, Lat/Long Grid

