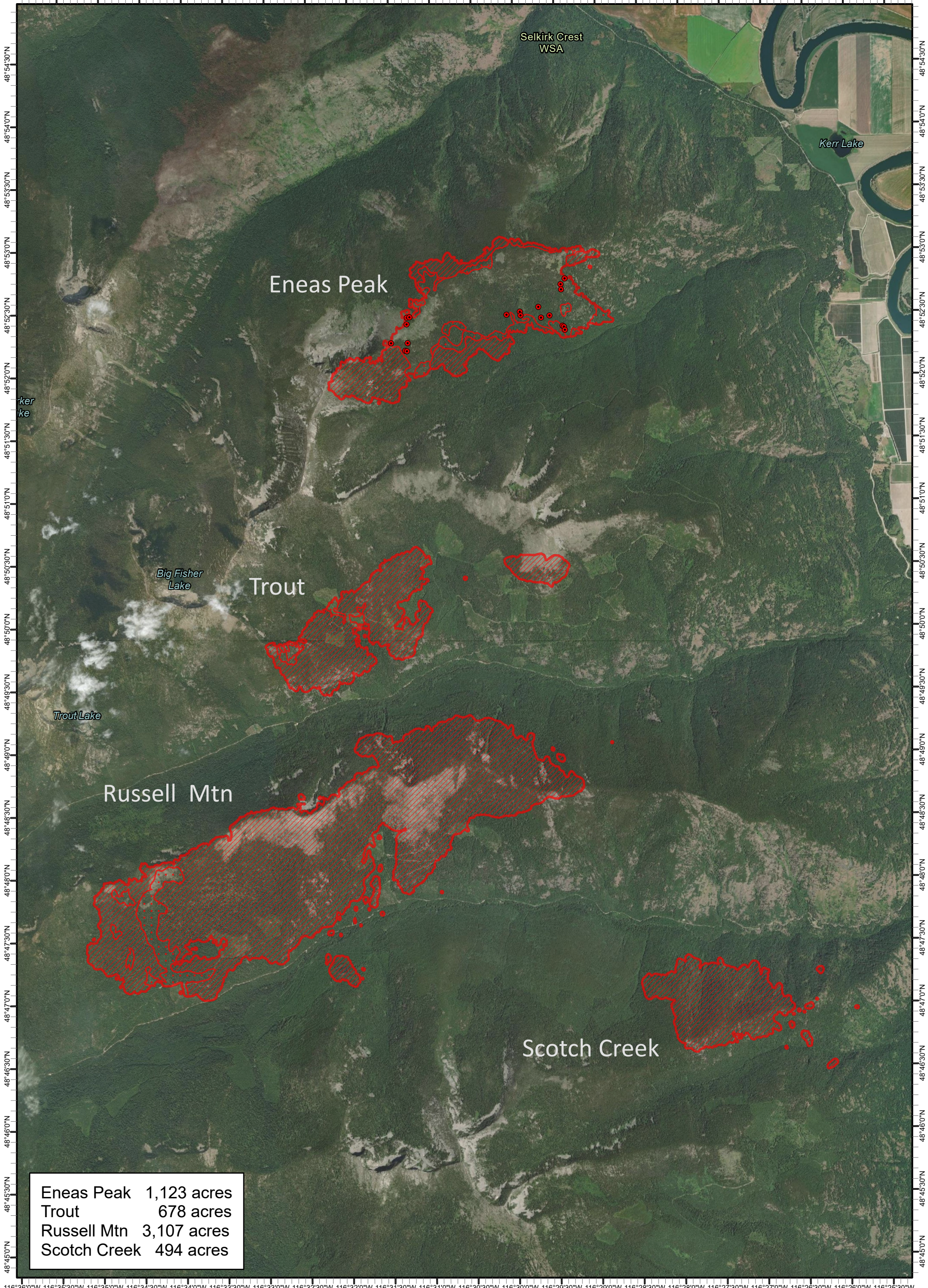


116°35'30"W 116°35'0"W 116°34'30"W 116°34'0"W 116°33'30"W 116°33'0"W 116°32'30"W 116°32'0"W 116°31'30"W 116°31'0"W 116°30'30"W 116°30'0"W 116°29'30"W 116°29'0"W 116°28'30"W 116°28'0"W 116°27'30"W 116°27'0"W 116°26'30"W 116°26'0"W 116°25'30"W



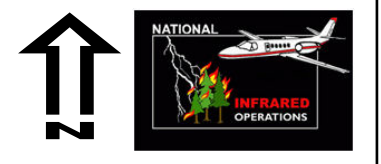
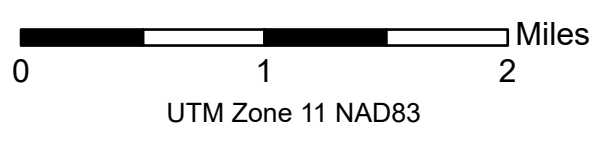
Eneas Peak	1,123 acres
Trout	678 acres
Russell Mtn	3,107 acres
Scotch Creek	494 acres

**Eneas Peak / Trout / Russell Mtn / Scotch Creek**

ID-IPF-000385  
Infrared Map

09/01/2022 20:50 hrs PDT

- IR Isolated Heat Source
- IR Heat Perimeter
- IR Intense Heat
- IR Scattered Heat



Print Date: 09/02/2022  
IRIN: Elsa Hucks

116°36'0"W 116°35'30"W 116°35'0"W 116°34'30"W 116°34'0"W 116°33'30"W 116°33'0"W 116°32'30"W 116°32'0"W 116°31'30"W 116°31'0"W 116°30'30"W 116°30'0"W 116°29'30"W 116°29'0"W 116°28'30"W 116°28'0"W 116°27'30"W 116°27'0"W 116°26'30"W 116°26'0"W 116°25'30"W