



Smoke Outlook

Boise/Payette NF Idaho -- Four Corners Fire

8/26 - 8/27

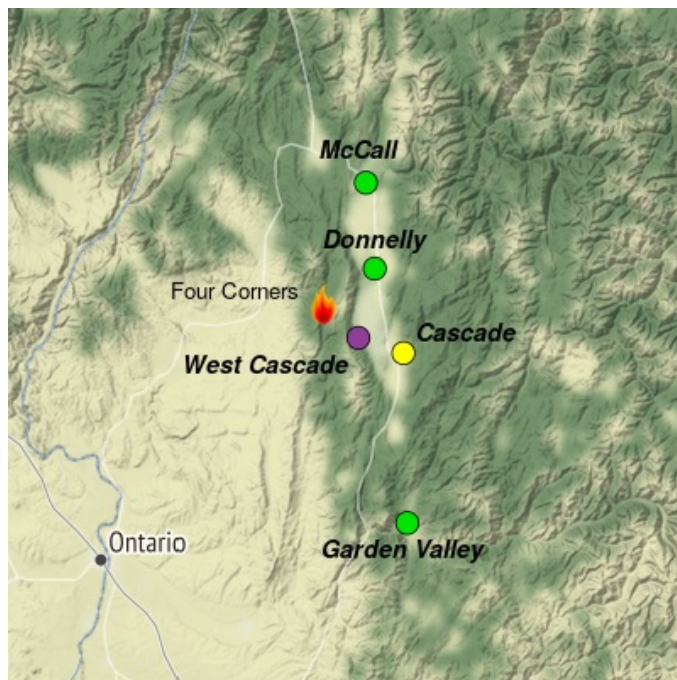
Issued by [Wildland Fire Air Quality Response Program](#) on August 26, 2022 at 07:27 AM MDT

Fire

The fire is currently at 9201 acres with 18% containment along its northern and western perimeters. Moderate to active fire behavior is expected today under warm, dry, and slightly unstable conditions. The fire should be most active along its southern and eastern perimeters, particularly near Wilson Peak. For additional fire information see the Four Corners InciWeb site (link below).

Smoke

The smoke that has settled over Lake Cascade overnight will gradually lift by midday. Then, as fire activity increases during the afternoon, eastward-moving plumes will be directed towards Cascade and Donnelly. Periods of MODERATE air quality are likely around Cascade and Donnelly. Elsewhere, areas near McCall and Garden Valley should remain mostly GOOD. However along the west side of the Lake just downwind of the fire, periods of VERY UNHEALTHY is expected.



Daily AQI Forecast* for Friday

Station	Yesterday			Thu 8/25	Comment for Today -- Fri, Aug 26	Forecast*	
	hourly					Fri 8/26	Sat 8/27
McCall	6a	noon	6p	●	Smoke from other fires may contribute to periods of haze.	●	●
Garden Valley	[Bar chart showing AQI levels]			●	Periods of haze possible from other fires.	●	●
Donnelly	No hourly data			●	MODERATE air quality at times from smoke that has settled over Lake Cascade.	●	●
Cascade	No hourly data			●	West winds to steer smoke across Lake Cascade, creating periods of Moderate.	●	●
West Cascade	No hourly data			●	Heavy smoke to persist due to the close proximity of the fire.	●	●

Issued Aug 26, 2022 by Tom Pierce (thomas.e.pierce@outlook.com) and Julie Hunter (julieh@myairdistrict.com)

Air Quality Index (AQI)	Actions to Protect Yourself
● Good	None
● Moderate	Unusually sensitive individuals should consider limiting prolonged or heavy exertion.
● USG	People within Sensitive Groups* should reduce prolonged or heavy outdoor exertion.
● Unhealthy	People within Sensitive Groups* should avoid all physical outdoor activity.
● Very Unhealthy	Everyone should avoid prolonged or heavy exertion.
● Hazardous	Everyone should avoid any outdoor activity.

***Disclaimer:** This forecast is based on fine particulates only; ozone is not included. Forecasts may be wrong; use at own risk. Use caution as conditions can change quickly. See your health professional as needed. Smoke sensitive groups should take appropriate precautions.

Additional Links

[Idaho DEQ air quality information](https://www.deq.idaho.gov/air-quality/) -- <https://www.deq.idaho.gov/air-quality/>
[Four Corners Facebook](https://www.facebook.com/payettenationalforest) -- <https://www.facebook.com/payettenationalforest>

[InciWeb - Four Corners Fire](https://inciweb.nwcg.gov/incident/8331/) -- <https://inciweb.nwcg.gov/incident/8331/>
 --

by Interagency Wildland Fire Air Quality Response Program -- www.wildlandfiresmoke.net
 Payette NF Idaho Updates -- <https://outlooks.wildlandfiresmoke.net/outlook/cc0ac676>
 *Smoke and Health Info -- www.airnow.gov/air-quality-and-health