



## Okanogan-Wenatchee National Forest

# Fire Information



Contact Fire Information at (509) 202-4184 from 8AM-8PM

### White River and Irving Peak Fire Update August 18, 2022 -- 9:00 AM

#### White River Fire

**Acres: 721 | Contained: 1%**  
**Cause: Lightning**

**Location:** Sears Creek area of the White River drainage, approximately 14 miles northwest of Plain, WA

**Quick Facts:** Personnel: 154  
Crews: 4 Helicopters: 3  
Engines: 11 Dozers: 1  
Water Tenders: 2

#### Irving Peak Fire

**Acres: 222 | Contained: 1%**  
**Cause: Lightning**

**Location:** Approximately 16 miles northwest of Plain, WA

**Quick Facts:** Personnel: 47  
Crews: 2 Helicopters: 3

**Highlights:** The White River and Irving Peak Fires were started by lightning on August 11 and are burning on the Okanogan-Wenatchee National Forest, approximately 15 miles northwest of Plain, WA.

**Suppression Strategy:** Both fires are being suppressed with a combination of strategies and tactics that provide the highest likelihood of success while mitigating risks to fire fighters. Values at risk include human safety, private property, recreational resources and critical habitat for threatened and endangered species. Extremely steep and inaccessible terrain require that firefighters construct indirect fire line using existing roads, in some cases a considerable distance from the fire's burning edge. There is no opportunity for firefighters to work safely and effectively directly at the fire's edge in this terrain and fuel.

**Fire Information Community Meeting:** A public meeting to provide information on the fires will be held **Today, August 18, at 7:00 p.m.**, at the Plain Community Church, 12565 Chapel Drive, Leavenworth, WA. The meeting will also be available live online at: <https://fb.me/e/2cpPULApB>

**Operations:** Both fires have burned approximately 943 acres combined. Moderate fire growth was observed yesterday, but no updated acre measurement was obtained for the past 24 hours. Growth was primarily uphill, while water-dropping aircraft helped to moderate spread downhill toward

values at risk. Aircraft are not expected to extinguish the fire, but to assist fire fighters in keeping fire behavior in check until long term fire barriers can be established around the perimeter of the fires. Yesterday, firefighters worked along Little Wenatchee Road, White River Road, and Sears Creek Road, securing threatened structures, and preparing roads to be used as containment lines when needed. Today, firefighters continue to scout and assess roads to serve as containment lines when needed, assessing the threat to structures and planning for structure protection.

**Evacuations:** Chelan County Sheriff's office has issued a **Level 3 evacuation (Go Now)** for Sears Creek Road, White River Road is at a **Level 2 (Be Prepared)**, and Little Wenatchee Road is at a **Level 1 (Stay Alert)**. Emergency personnel are in the process of advising residents in the area. Residents of five homes were evacuated from the Sears Creek Area.

For an interactive evacuation map of Chelan County, please visit <https://tinyurl.com/whiteriverevacuationmap>. To sign up for the Chelan County emergency alert system, please visit <https://public.alertsense.com/signup/?regionid=1184>.

**Fire Behavior:** Fire is burning on steep terrain with heavy dead and down fuels. There is flanking spread, with downhill rollout in avalanche chutes. The majority of spread has been south towards Wenatchee ridge through single tree and group torching with short range spotting.

**Weather:** Today, cloud cover, slightly cooler temperatures and slightly higher humidity will help moderate fire spread and spotting potential. There is a slight chance for isolated thunderstorms with associated gusty winds.

**Closures:** The Okanogan-Wenatchee National Forest has issued a closure order for the White River Fire area. Please see the closure order here: [Closure Order](#). It is recommended that the public avoid recreating in the Little Wenatchee and White River Road (FS Roads 6500 and 6400) areas. The Pacific Crest Trail is not affected by this fire.

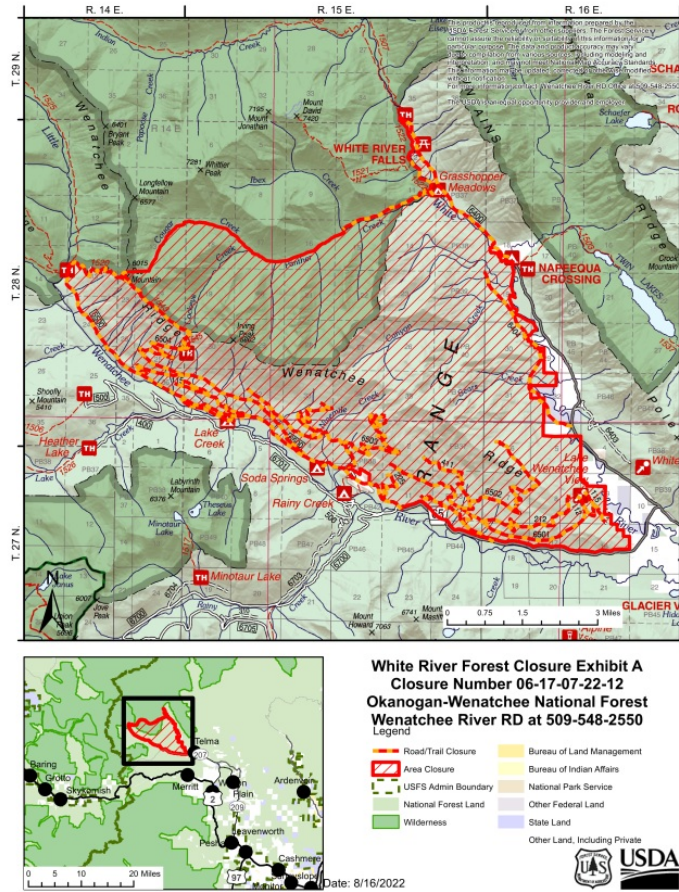
**Restrictions:** Campfires are not currently allowed anywhere within the Okanogan-Wenatchee National Forest. [Stage 2 Restrictions](#) are now in effect for the entire forest, including campgrounds and wilderness areas.

**Pacific Crest Trail:** Smoke is visible from the Pacific Crest Trail (PCT). While there is currently no impact to the PCT, hikers should be aware that Little Wenatchee Ford and White River Trailheads are closed and cannot be used to access the PCT.

**Safety Message:** Fire fighter crews and equipment are busy in the fire area. Helicopters and water-scooping aircraft are very active on Lake Wenatchee. Please be prepared to clear areas of the lake where scooper aircraft are operating. Please avoid all areas where people and equipment are working. Be cautious and continue to do all you can to prevent wildfires.

**Online:** <https://inciweb.nwcg.gov/incident/8329/> | <https://www.facebook.com/WhiteRiverFireInfo>  
<https://www.facebook.com/nwteam7>

Inciweb: <https://inciweb.nwcg.gov/incident/8329/>

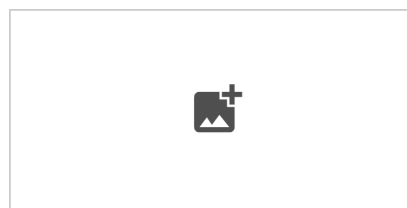


White River Fire Closure Map Issued by the Okanagan-Wenatchee National Forest August 17, 2022.

Stay connected to your public lands. Get the latest forest news and alerts by liking us on [Facebook](#) or following us on twitter [@OkaWenNF](#).



The mission of the USDA Forest Service is to sustain the health, diversity, and productivity of the nation's forests and grasslands to meet the needs of present and future generations. USDA is an equal opportunity provider, employer, and lender.



Visit our Website

USDA Forest Service | 215 Melody Lane, Wenatchee, WA 98801

[Unsubscribe victoria.wilkins@usda.gov](#)

[Update Profile](#) | [Constant Contact Data Notice](#)

Sent by victoria.wilkins@usda.gov powered by



Try email marketing for free today!