



**UNITED STATES DEPARTMENT OF AGRICULTURE
FOREST SERVICE
IDAHO PANHANDLE NATIONAL FORESTS
PRIEST LAKE DISTRICT
NORDMAN, IDAHO**

**FOREST ORDER #01-04-08-22-001
DIAMOND WATCH FIRE CLOSURE**

Pursuant to 16 U.S.C. § 551 and 36 C.F.R. § 261.50(a) and (b), the following acts are prohibited on the Priest Lake Ranger District, Idaho Panhandle National Forests:

PROHIBITION:

1. Prohibited to go into or be upon any area which is closed for the protection of Public Health and Safety. [36 CFSR 261.53(e)]
2. Being on the Road [36 CFR 261.54(e)]
3. Being on the Trail [36 CFSR 261.55(a)]
4. Prohibited from going into or being upon an area [36 CFSR 261.52(e)]

CLOSED CAMPSITE:

Petit Lake Dispersed Campsites

AREA CLOSURE with CLOSED ROADS:

The area closed is pictorially defined in the attached map and is in Range 45 East and Township 36 North. There are 4 roads specifically closed under this Area Closure (no trails), these roads are FSR 1362H, 308 and 311. FSR 1362 is open. Unique features to this closure are Pettit Lake is closed for access and any dispersed camping (R45E; T36N; Section 10) and Diamond Peak (R45E; T36N; Section 11).

PURPOSE:

This closure is for public safety due to wildfire effects on the Diamond Watch Fire, on the Priest Lake RD, and prohibits all methods of travel (foot, mechanized, motorized and stock) on the closed trail and closed roads (see Map).

IMPLEMENTATION:

This order will be in effect from **August 11th, 2022** and shall remain in effect until for 90 days past signature, or until the order is rescinded.

These prohibitions are in addition to the general prohibitions in 36 C.F.R. Part 261, Subpart A.

EXEMPTIONS:

Pursuant to 36 C.F.R. § 261.50(e), the following persons are exempt from this Order:

1. Persons with a special use authorization or other Forest Service authorization specifically exempting them from the effect of this order. 36 C.F.R. § 261.50(e)(1).
2. Any Federal, State, or local officer, or member of an organized rescue or fire fighting force in the performance of an official duty. 36 C.F.R. § 261.50(e)(4).

VIOLATION:

Violation of these prohibitions is punishable by a fine of not more than \$5,000 for an individual or \$10,000 for an organization, imprisonment for not more than 6 months, or both. (16 U.S.C. §551 and 18 U.S.C. §§ 3559, 3571(b)(6) and 3581(b)(7).

INFORMATION:

Further information regarding this Order may be obtained at the Priest Lake Ranger District, 32203 Highway 57, Priest River, Idaho. Telephone: (208) 443-2512.

Signed at Coeur d'Alene, Idaho, this 11th day of August 2022

Carl Petrick
Forest Supervisor
Idaho Panhandle National Forests



Idaho Panhandle National Forests

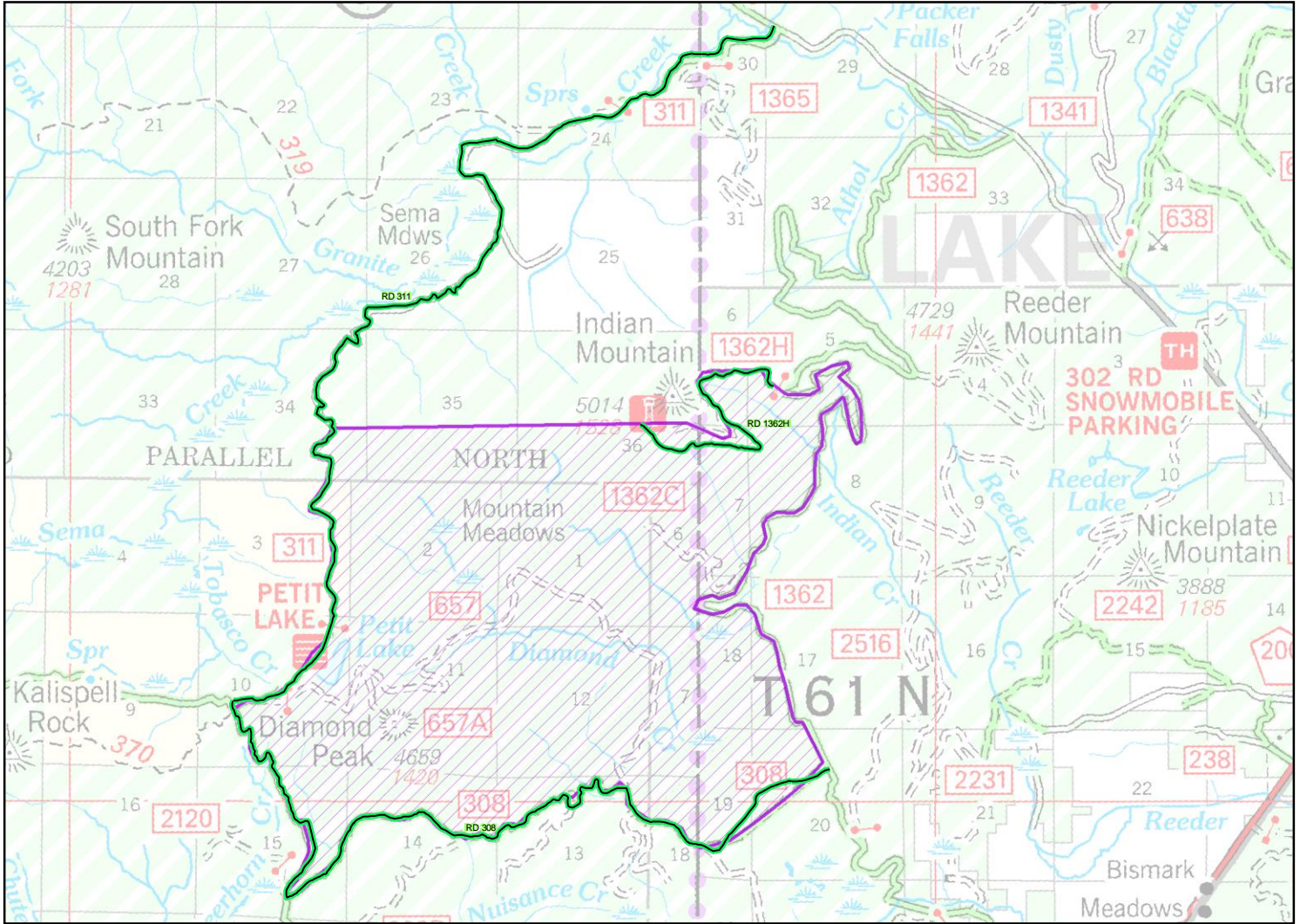


Forest Closure: Diamond Watch Fire

Order Number: 01-04-08-22-001

Effective Date : 11 Aug 2022

Rescind Date : 90 Days






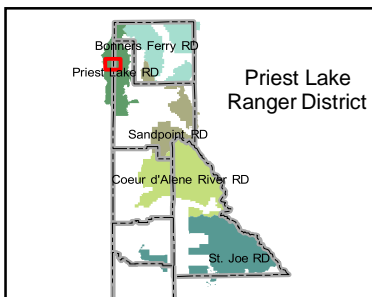
IDAHO Bonner County

Closed Routes

Closures

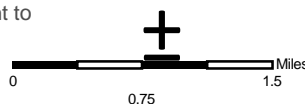
RD 308, 311, 1362H

-  Road
-  Trail
-  Area



Disclaimer

The USDA Forest Service makes no warranty, expressed or implied regarding the data displayed on this map, and reserves the right to correct, update, modify, or replace this information without notification.



1. Assessment of Need and Enforcement Plan

1. Background:

The Forest Service has prepared this emergency closure due to wildfire activity. It is necessary to close this area, in order to protect public safety during fire operations.

2. Intent of Subpart B order:

The intent of the following order is to protect public safety by restricting access on and around National Forest System lands, while providing for efficient operations while this closure is in effect.

3. Enforcement:

Enforcement of the closure forest order will be a combination of signing, public information, personal contacts, and law enforcement actions. The following summarizes the enforcement goals with respect to this closure order:

- The goal will be to ensure that people are informed of the closure order. This will initially be promulgated through contacts and information releases before the special order goes into effect.
- LEO's & FPO's will endeavor to enforce the order through patrols and contacts when available to do so. Enforcement with a warning or citation will be at the discretion of the Law Enforcement Officer (LEO) or Forest Protection Officer (FPO).

4: Posting:

Current posting will be modified to reflect the new prohibition. Posting will be completed by the Forest Staff and will be posted at a minimum on the IPNF Alerts & Notices web page, the District office and signage in the immediate area of the closure.