



Smoke Outlook

Klamath Basin Yeti Fire & SRF Lightning Complex

8/12 - 8/13

Issued by [Wildland Fire Air Quality Response Program](#) on August 12, 2022 at 08:03 AM PDT

Fire

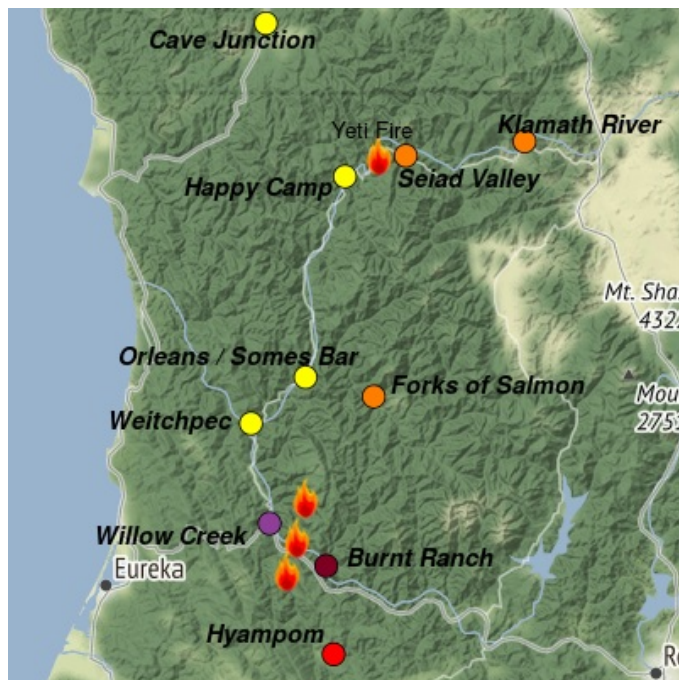
Heavy fuels from the Yeti Fire continue to smolder. There is a new, active fire near Scott Bar. With hotter, drier weather the fires in the SRF Lightning Complex are expected to be more active today. As conditions allow, firing operations are planned for the SRF Lightning Complex in order to limit fire spread and intensity.

Smoke

Smoke from the Yeti Fire as well as the new fire near Scott Bar will impact Happy Camp, Seiad Valley and Klamath River. **Hoopa**, Weitchpec, and Orleans should expect Unhealthy this afternoon, followed by clearing. Heavy afternoon and evening smoke in Forks of Salmon is expected to clear overnight. Heaviest smoke from the SRF Lightning Complex will continue to impact nearby communities, with Hazardous air quality this afternoon and evening in Willow Creek and much of the day in Burnt Ranch. Expect Unhealthy much of the day in Hyampom and Hayfork. Over the weekend the inversion layer is expected to grow stronger with more smoke lingering in drainages.

Fire and Smoke Map

For current smoke conditions and additional hourly data, see the Fire and Smoke Map at "<https://fire.airnow.gov/>"



Daily AQI Forecast* for Friday

Station	Yesterday hourly	Thu 8/11	Comment for Today -- Fri, Aug 12	Forecast*	Fri 8/12	Sat 8/13
Cave Junction			Moderate this morning, could be USG in the afternoon before clearing.			
Willow Creek			Expect Very Unhealthy to Hazardous from late morning to mid afternoon.			
Burnt Ranch	No hourly data		Expect Hazardous throughout the day.			
Hyampom	No hourly data		Expect Unhealthy throughout the day.			
Seiad Valley			Moderate to USG throughout the day.			
Klamath River	No hourly data		Expect Moderate this morning, USG this afternoon and evening, Moderate tonight.			
Weitchpec			USG to Unhealthy from mid-morning to mid-afternoon, then clearing.			
Forks of Salmon	No hourly data		Moderate this morning, Unhealthy afternoon and evening, clearing tonight.			
Orleans / Somes Bar	No hourly data		Moderate this morning, Unhealthy afternoon, then clearing.			
Happy Camp			Moderate to USG throughout the day.			

Issued Aug 12, 2022 by Margaret Key (aramargaretkey@gmail.com)

Air Quality Index (AQI)	Actions to Protect Yourself
Good	None
Moderate	Unusually sensitive individuals should consider limiting prolonged or heavy exertion.
USG	People within Sensitive Groups* should reduce prolonged or heavy outdoor exertion.
Unhealthy	People within Sensitive Groups* should avoid all physical outdoor activity.
Very Unhealthy	Everyone should avoid prolonged or heavy exertion.
Hazardous	Everyone should avoid any outdoor activity.

***Disclaimer:** This forecast is based on fine particulates only; ozone is not included. Forecasts may be wrong; use at own risk. Use caution as conditions can change quickly. See your health professional as needed. Smoke sensitive groups should take appropriate precautions.

Additional Links

[Fire and Smoke Map](https://fire.airnow.gov/#) -- <https://fire.airnow.gov/#>

[Northern California - Yreka Outlook](https://outlooks.airfire.org/outlook/57911360?) -- <https://outlooks.airfire.org/outlook/57911360?>



Issued by Interagency Wildland Fire Air Quality Response Program -- www.wildlandfiresmoke.net

Klamath Basin Updates -- <https://outlooks.wildlandfiresmoke.net/outlook/8626974c>

*Smoke and Health Info -- www.airnow.gov/air-quality-and-health