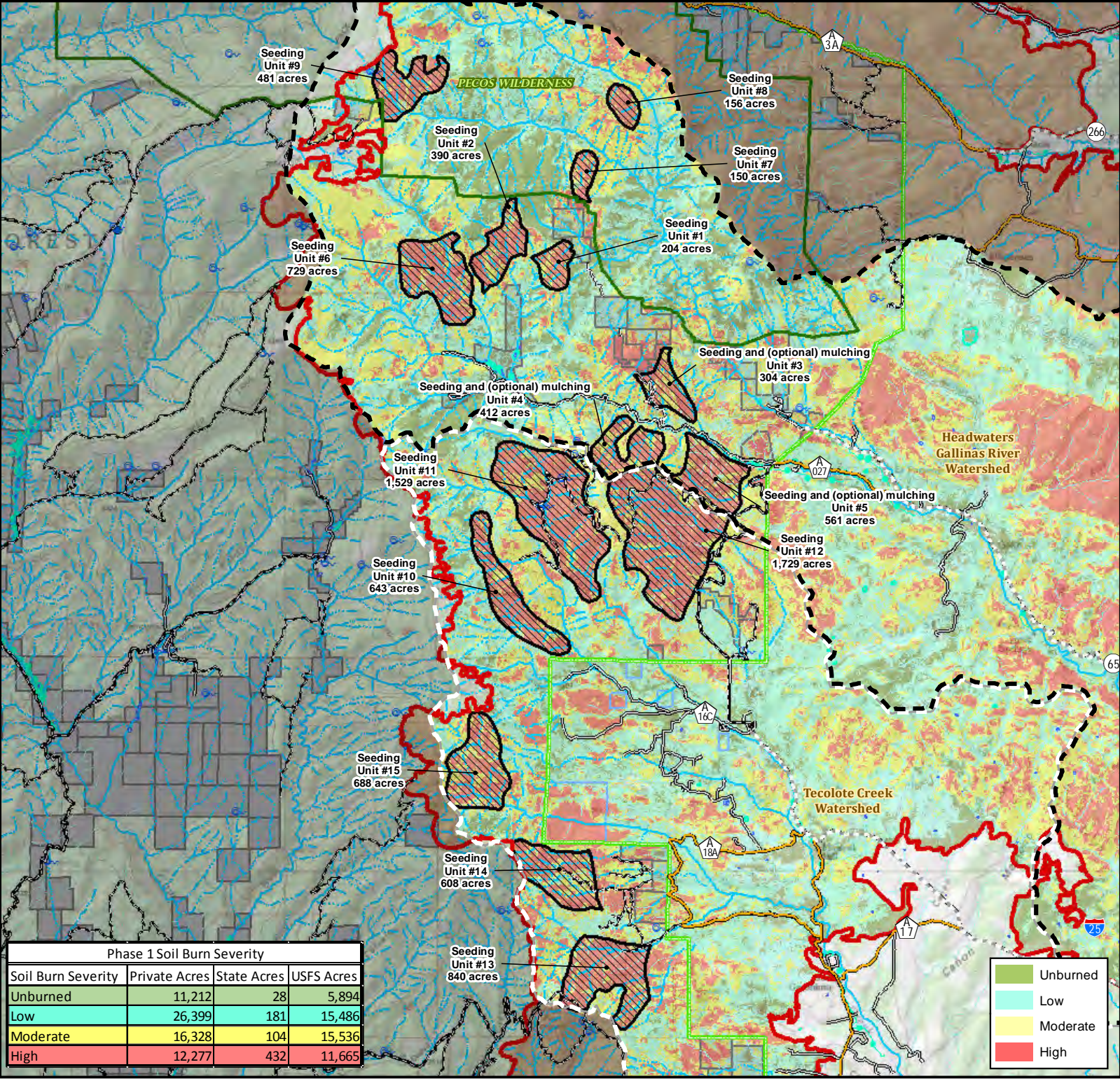


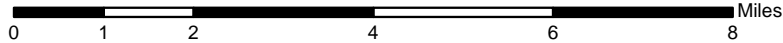


**Hermits Peak / Calf Canyon BAER - Phase I**  
Recommended Aerial Seeding - Headwaters Gallinas River and Tecolote Creek Watersheds

Coordinate System: NAD 1983 UTM Zone 13N  
Projection: Transverse Mercator  
Datum: North American 1983



Phase 1 Soil Burn Severity			
Soil Burn Severity	Private Acres	State Acres	USFS Acres
Unburned	11,212	28	5,894
Low	26,399	181	15,486
Moderate	16,328	104	15,536
High	12,277	432	11,665



This map is a product of a Burned Area Emergency Response (BAER) Team rapid assessment. Further information concerning the accuracy and appropriate uses of this data may be obtained from the USDA Forest Service.

The Forest Service makes no warranty, expressed or implied, including the warranties of merchantability and fitness for a particular purpose, nor assumes any legal liability or responsibility for the accuracy, reliability, completeness or utility of these geospatial data, or for the improper or incorrect use of these geospatial data. These geospatial data and related maps or graphics are not legal documents and are not intended to be used as such. The data and maps may not be used to determine title, ownership, legal descriptions, boundaries, legal jurisdiction, or restrictions that may be in place on either public or private land. Natural hazards may or may not be depicted on the data and maps, and land users should exercise due caution. The data is dynamic and may change over time. The user is responsible to verify the limitations of the geospatial data and to use the data accordingly.

For more information contact: Santa Fe National Forest Headquarters at: (605) 438-5300.  
The USDA is an equal opportunity provide and employer.

Date: 6/21/2022

- Aerial Seeding - 9,422ac
- Headwaters Gallinas River Watershed
- Tecolote Creek Watershed
- Fire Perimeter 05.14.2022
- Pecos Wilderness
- Forest Administrative Boundary
- Private Inholding

