



# Smoke Outlook

## Central Oregon Windigo Fire and Potter Fire

8/06 - 8/07

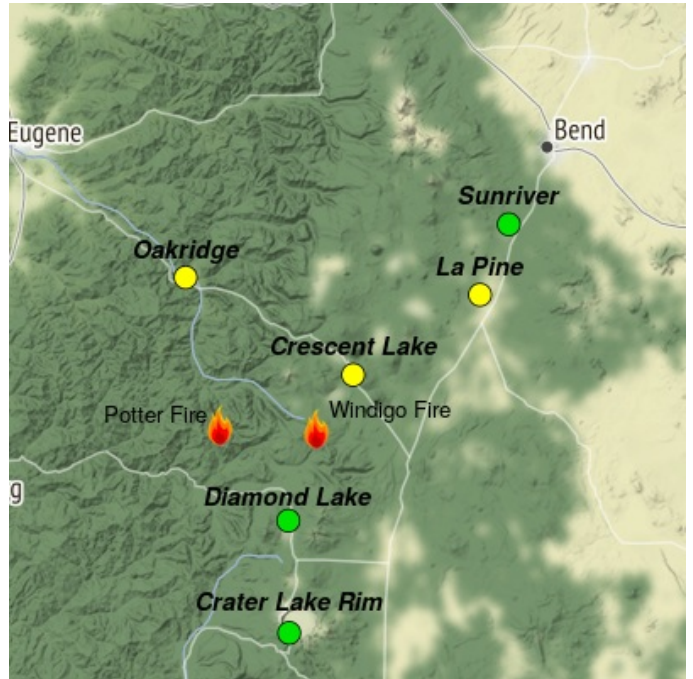
Issued by [Wildland Fire Air Quality Response Program](#) on August 06, 2022 at 07:52 AM PDT

### Fire

The Windigo Fire has been remapped to 1046 acres with 5% containment. The Potter Fire grew 18 acres Friday and is now at 167 acres with 0% containment. Minimal fire growth is expected today. For additional information on the [Potter Fire](#) and [Windigo Fire](#).

### Smoke

Terrain induced light upslope flow late this morning will shift to westerly early this afternoon and to NW late today into this evening. As these winds shift clockwise today smoke from the Cedar Creek fire, including Windigo and Potter fires, will impact the Sunriver and the La Pine areas this afternoon, and Crescent Lake and Diamond Lake this evening. Winds will shift to easterly overnight which will set the stage for smoke to move down the Salt Creek drainage into Oakridge. Depending on amount of smoke generated today, Moderate to USG AQ is likely tonight in Oakridge.



Daily AQI Forecast\* for Saturday

Station	Yesterday hourly		Fri 8/05	Comment for Today -- Sat, Aug 06	Forecast*	
	6a	noon 6p			Sat 8/06	Sun 8/07
Crescent Lake	No hourly data			Moderate AQ with periods of USG late afternoon into this evening.	Yellow	Green
La Pine			Green	Overall Moderate air quality (AQ). Possible USG AQ late today into this evening.	Yellow	Green
Sunriver			Green	Good air quality (AQ). A few hours of Moderate AQ possible this afternoon.	Green	Green
Oakridge			Green	Moderate air quality (AQ). Good AQ today, then Moderate to USG tonight.	Yellow	Green
Crater Lake			Green	Good air quality. A few hours of Moderate AQ possible this evening.	Green	Green
Diamond Lake	No hourly data			Good air quality.	Green	Green

Issued Aug 06, 2022 by Mark Struthwolf (801) 815-8692

Air Quality Index (AQI)	Actions to Protect Yourself
Green	Good None
Yellow	Moderate Unusually sensitive individuals should consider limiting prolonged or heavy exertion.
Orange	USG People within Sensitive Groups* should <b>reduce</b> prolonged or heavy outdoor exertion.
Red	Unhealthy People within Sensitive Groups* should <b>avoid all</b> physical outdoor activity.
Purple	Very Unhealthy Everyone should avoid prolonged or heavy exertion.
Dark Purple	Hazardous Everyone should avoid any outdoor activity.

\***Disclaimer:** This forecast is based on fine particulates only; ozone is not included. Forecasts may be wrong; use at own risk. Use caution as conditions can change quickly. See your health professional as needed. Smoke sensitive groups should take appropriate precautions.



Issued by Interagency Wildland Fire Air Quality Response Program -- [www.wildlandfiresmoke.net](http://www.wildlandfiresmoke.net)

Central Oregon Updates -- <https://outlooks.wildlandfiresmoke.net/outlook/7f95b6c6>

\*Smoke and Health Info -- [www.airnow.gov/air-quality-and-health](http://www.airnow.gov/air-quality-and-health)