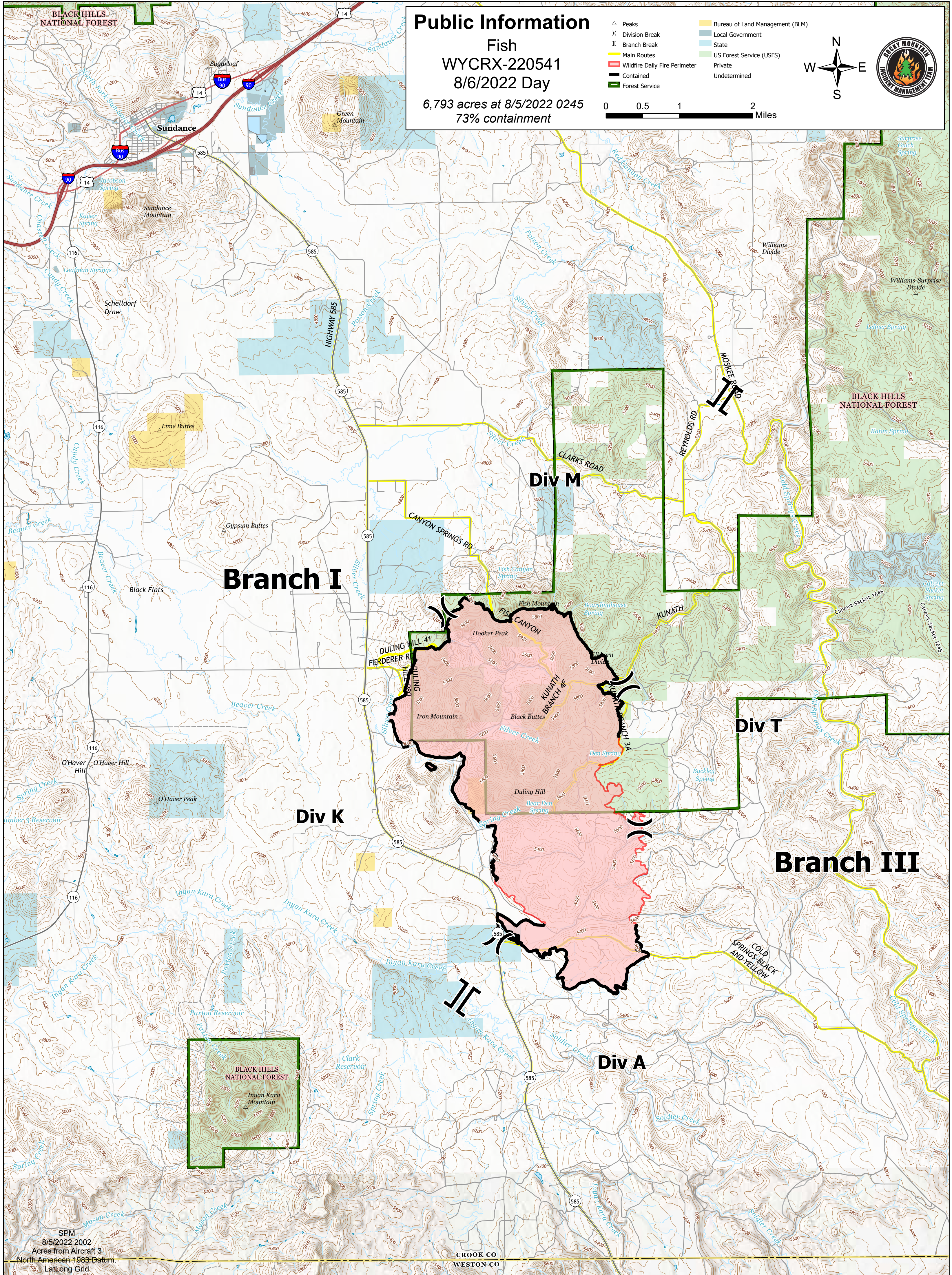
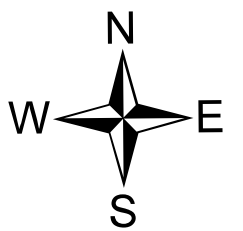


Public Information

Fish
WYCRX-220541
8/6/2022 Day

6,793 acres at 8/5/2022 0245
73% containment

- △ Peaks
- ⌵ Division Break
- ⌵ Branch Break
- Yellow Main Routes
- Red Wildfire Daily Fire Perimeter
- Black Contained
- Green Forest Service
- Bureau of Land Management (BLM)
- Local Government
- State
- US Forest Service (USFS)
- Private
- Undetermined



Branch I

Div M

Div K

Div T

Branch III

Div A