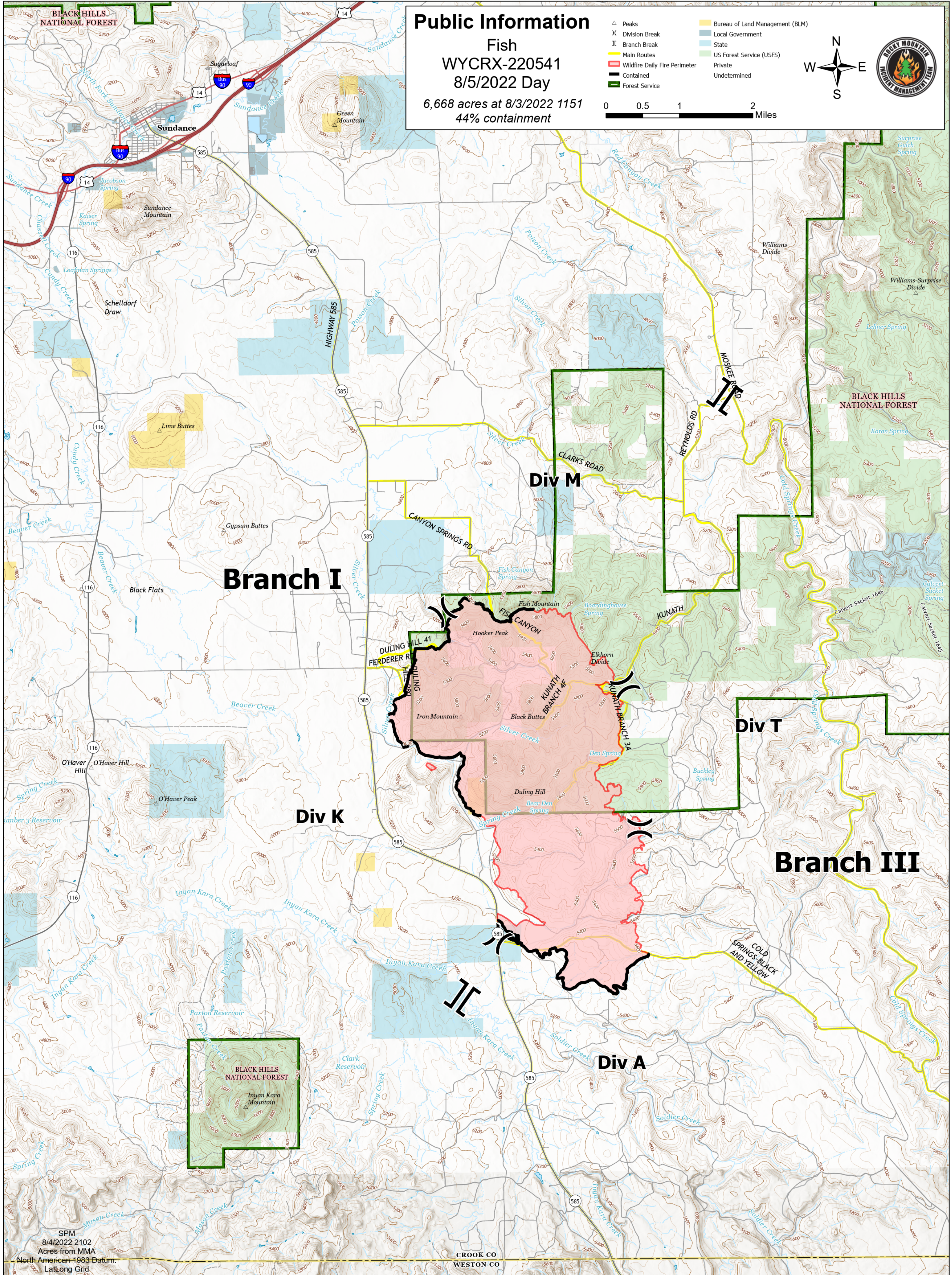


# Public Information

Fish  
WYCRX-220541  
8/5/2022 Day

6,668 acres at 8/3/2022 1151  
44% containment

- △ Peaks
- ⌵ Division Break
- ⌵ Branch Break
- Main Routes
- ▭ Contained
- ▭ Forest Service
- ▭ Bureau of Land Management (BLM)
- ▭ Local Government
- ▭ State
- ▭ US Forest Service (USFS)
- ▭ Private
- ▭ Undetermined



**Branch I**

**Div M**

**Div T**

**Branch III**

**Div K**

**Div A**