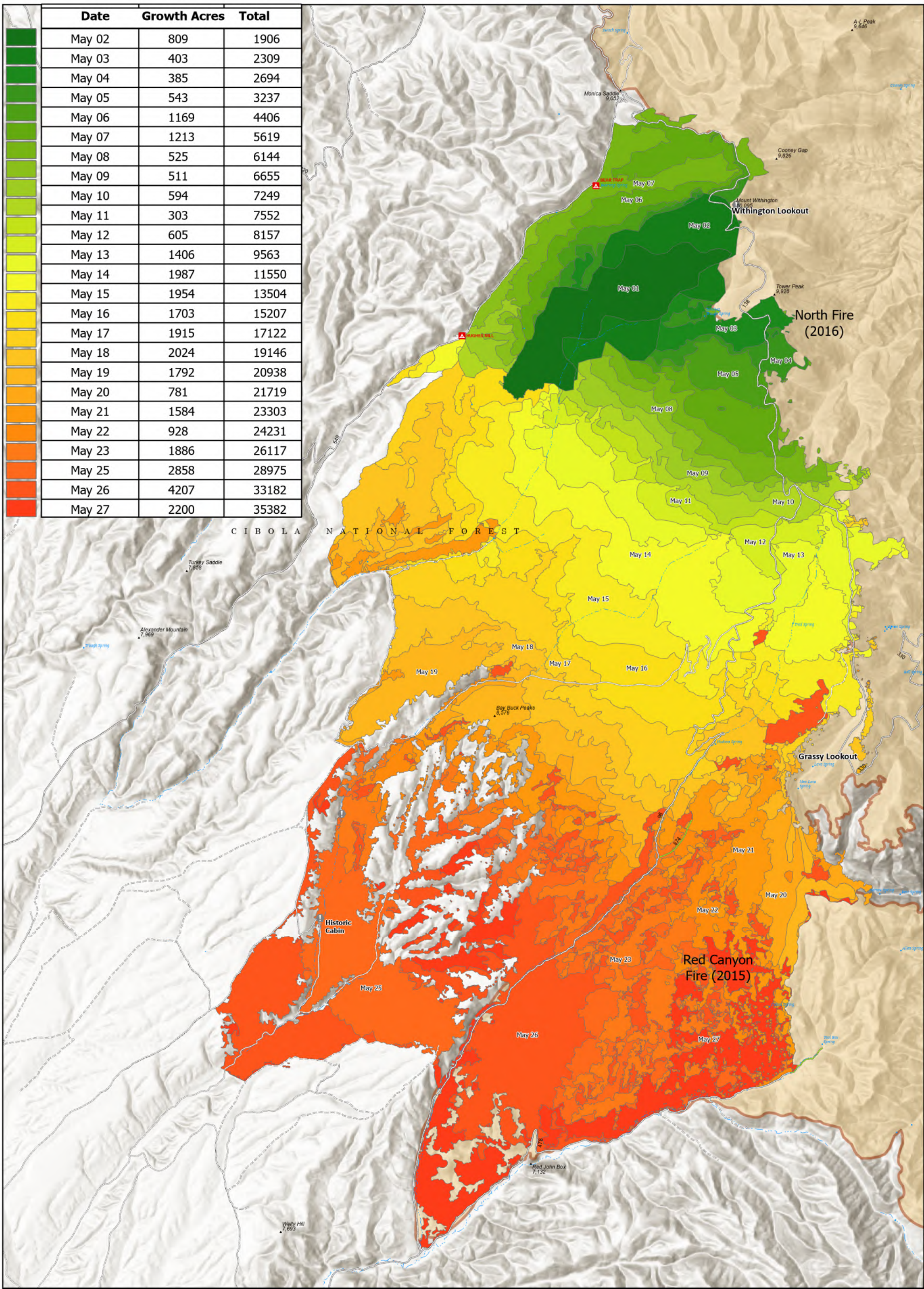


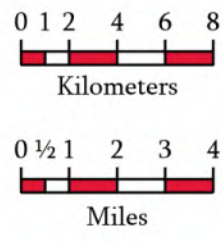
| Date | Growth Acres | Total |
|--------|--------------|-------|
| May 02 | 809 | 1906 |
| May 03 | 403 | 2309 |
| May 04 | 385 | 2694 |
| May 05 | 543 | 3237 |
| May 06 | 1169 | 4406 |
| May 07 | 1213 | 5619 |
| May 08 | 525 | 6144 |
| May 09 | 511 | 6655 |
| May 10 | 594 | 7249 |
| May 11 | 303 | 7552 |
| May 12 | 605 | 8157 |
| May 13 | 1406 | 9563 |
| May 14 | 1987 | 11550 |
| May 15 | 1954 | 13504 |
| May 16 | 1703 | 15207 |
| May 17 | 1915 | 17122 |
| May 18 | 2024 | 19146 |
| May 19 | 1792 | 20938 |
| May 20 | 781 | 21719 |
| May 21 | 1584 | 23303 |
| May 22 | 928 | 24231 |
| May 23 | 1886 | 26117 |
| May 25 | 2858 | 28975 |
| May 26 | 4207 | 33182 |
| May 27 | 2200 | 35382 |



PROGRESSION

BEAR TRAP
NMCIF000138
5/27/2022 - Day
35,382 acres at 5/26/2022 21:40

- Value at Risk
- FS Road - High Clearance (LVL 2)
- FS Road - Passenger Car (LVL 3)
- Campground
- Dirt (Not Paved)
- Dirt Roads
- Unimproved Roads
- Red Canyon Fire
- North Fire



1:66,000
Datum: North American 1983