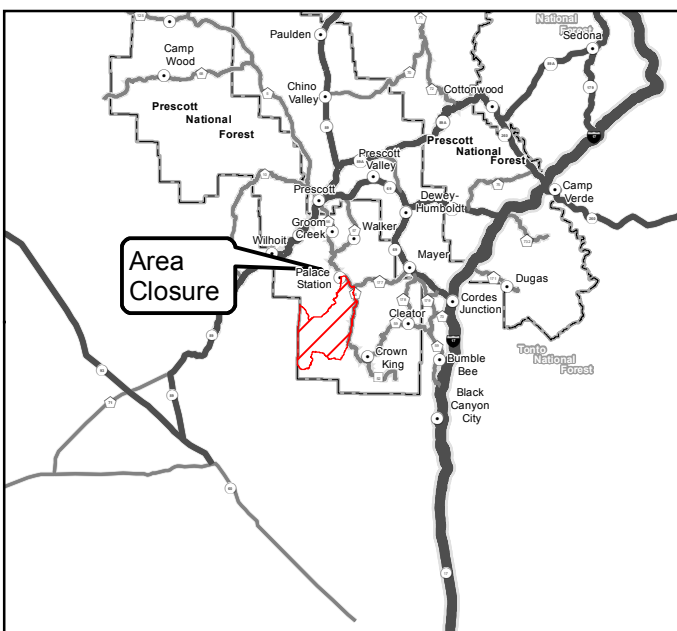
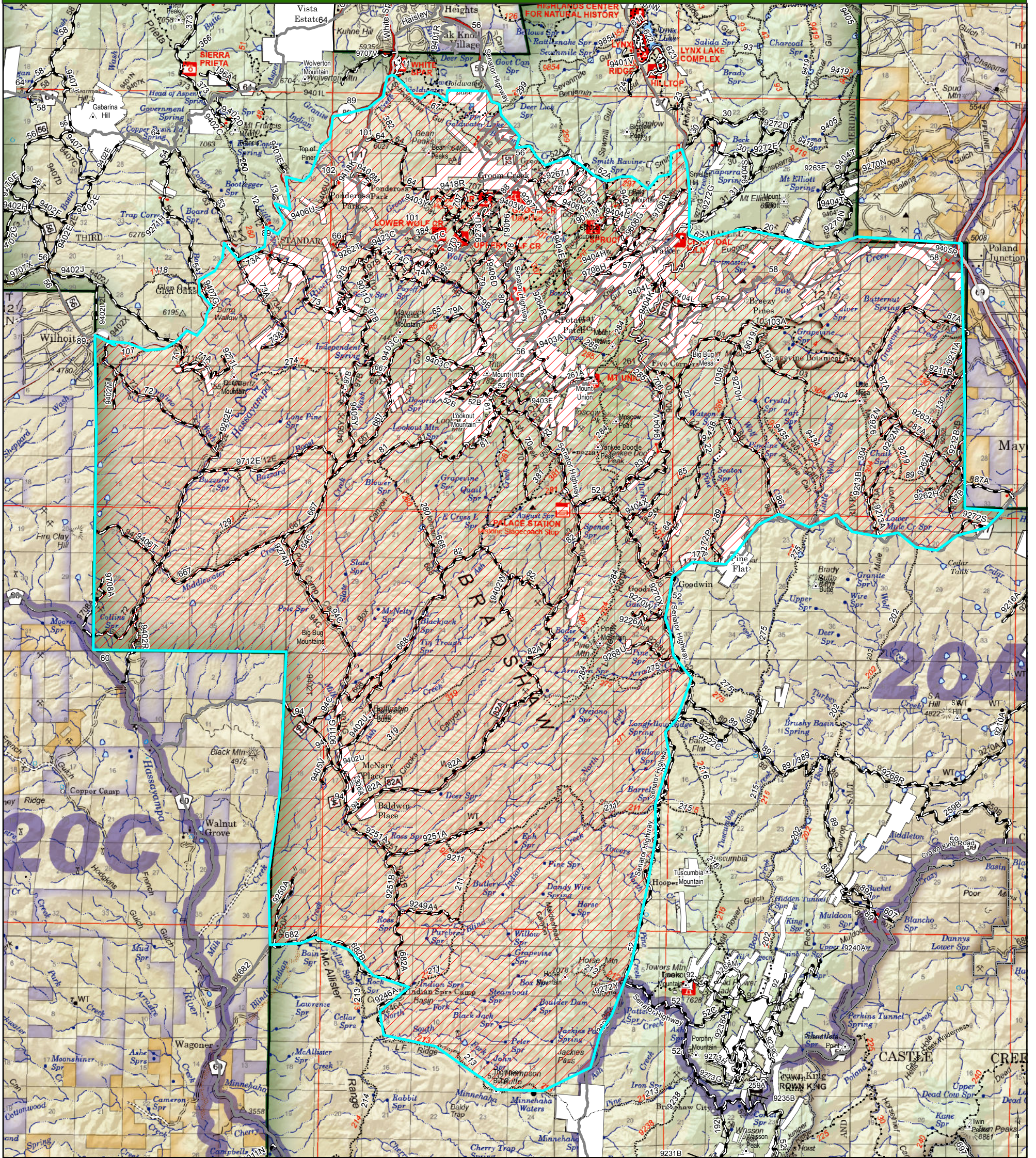
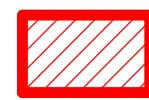


# PRESCOTT NATIONAL FOREST

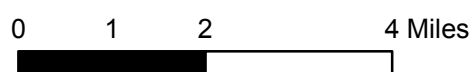
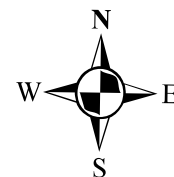
## SOUTHWESTERN REGION



**Exhibit A**  
**Order # 03-09-03-22-05**  
**Crooks Fire**  
**Public Safety Closure**  
**Prescott National Forest**



Closure Area



This road, trail, and area closure affects only National Forest System roads, trails and lands within the closure area on Prescott National Forest. The closure does not apply to any non-National Forest System roads, trails or lands within the closure boundary.