

Activity Map - KNP COMPLEX

9/29/2021

48,872 acres



NPS Boundaries

- Sequoia Groves
- Wildfire Daily Fire Perimeter

Roads

- Primary
- Secondary
- Local
- Closed Roads

Park Trails

- Class 5: Fully Developed
- Class 4: Highly Developed
- Class 3: Developed
- Class 2: Moderately Developed
- Class 1: Minimally Developed

Land Ownership

- State Public Lands
- Other State Lands
- U.S. Fish & Wildlife Service Lands
- Bureau of Land Management Lands
- National Park Service Lands
- Private; Local Government; Undesignated
- Forest Service Lands

FS National Recreation Sites

- Campground
- Group Campground
- Picnic Site
- Boating Site
- Interpretive Site

NPS National Recreation Sites

- NPS Administrative Offices
- Campground
- Visitor Center

Crews are constructing contingency lines in the Hartland area.

Firefighters on the northern perimeter work to extend containment lines as they progress to the east with direct line construction.

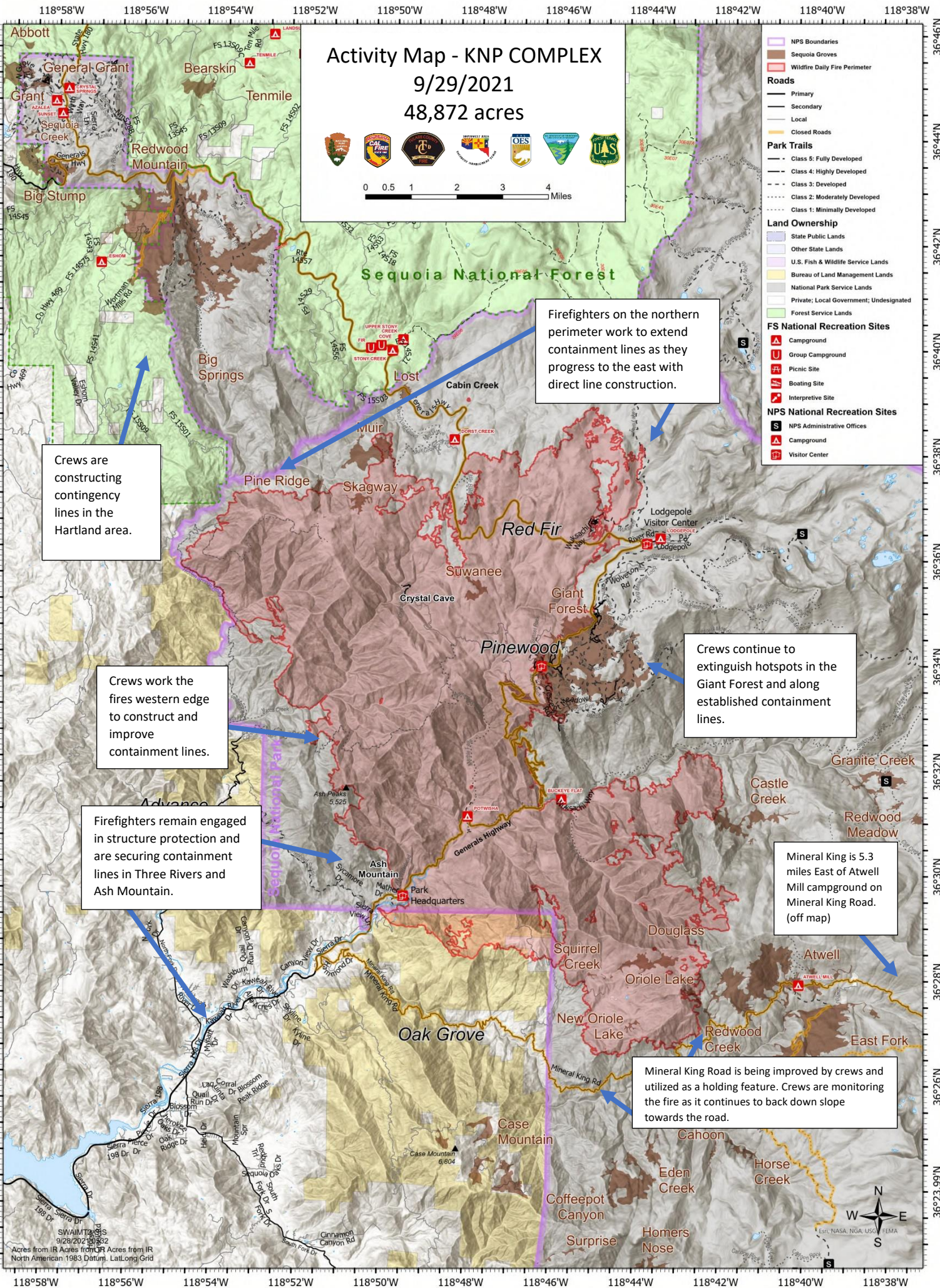
Crews work the fires western edge to construct and improve containment lines.

Crews continue to extinguish hotspots in the Giant Forest and along established containment lines.

Firefighters remain engaged in structure protection and are securing containment lines in Three Rivers and Ash Mountain.

Mineral King is 5.3 miles East of Atwell Mill campground on Mineral King Road. (off map)

Mineral King Road is being improved by crews and utilized as a holding feature. Crews are monitoring the fire as it continues to back down slope towards the road.



SWAINT GIS
9/28/2021 10:32
Acres from IR Acres from IR
North American 1983 Datum, Lat/Long Grid

