



Smoke Outlook for 9/24 - 9/25
Southern Sierra - Sequoia Windy Fire
 Issued at: 2021-09-24 08:01 PDT

Special Statement

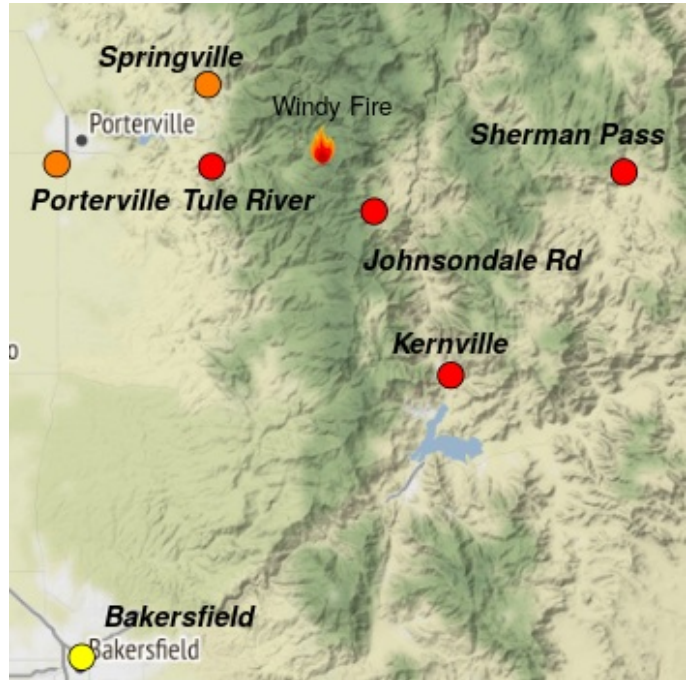
San Joaquin Valley Air Pollution Control District is extending an Air Quality Alert for San Joaquin, Stanislaus, Merced, Madera, Fresno, Tulare, and the Valley portion of Kern Counties through 11AM Monday, due to smoke impacts from ongoing wildfires.

Fire

The Windy Fire, last reported at 49,053 acres and 6% containment, continues to be active. Between 1am and 6am this morning, the fire moved aggressively towards California Hot Springs and Pine Flats. The fire remains fuel driven and continues to grow especially on the east, south, and western portions of the fire.

Smoke

Smoky conditions remain over the fire area and in locations surrounding it. Smoke over the fire area will keep fire activity minimal, but any clearings may provide the winds and heat needed for behavior that is more aggressive. The inversion is expected to dissipate late morning into the afternoon allowing for improved smoke dispersion. Light winds will keep smoke in the area and locations near the fire can expect conditions similar to yesterday with the heaviest concentrations through the morning and in the evening into overnight. Kernville, Tule River Reservation, Johnsondale, and Sherman Pass can all expect to see levels reaching V. Unhealthy and Hazardous. Any increase in fire activity may increase smoke production.



Daily AQI Forecast* for Sep 24, 2021

Station	Yesterday hourly	Thu 9/23	Forecast* Comment for Today -- Fri, Sep 24	Fri 9/24	Sat 9/25
Springville			Moderate to Unhealthy levels expected, improvements after noon expected		
Porterville			Moderate to Unhealthy levels expected, improvements after noon expected		
Tule River			Very Unhealthy and Hazardous levels possible in the morning and evening/overnight		
Sherman Pass			Very Unhealthy and Hazardous levels possible in the morning and evening/overnight		
Johnsondale Rd	No hourly data		Very Unhealthy and Hazardous levels possible in the morning and evening/overnight		
Bakersfield			May see peaks of Unhealthy, Good and Moderate otherwise		
Kernville			Very Unhealthy and Hazardous levels possible in the morning and evening/overnight		

Issued 2021-09-24 08:01 PDT by Carolyn Kelly, ARA - carolyn.kelly@dnr.wa.gov

Air Quality Index (AQI)	Actions to Protect Yourself
Good	None
Moderate	Unusually sensitive individuals should consider limiting prolonged or heavy exertion.
USG	People within Sensitive Groups* should reduce prolonged or heavy outdoor exertion.
Unhealthy	People within Sensitive Groups* should avoid all physical outdoor activity.
Very Unhealthy	Everyone should avoid prolonged or heavy exertion.
Hazardous	Everyone should avoid any outdoor activity.

***Disclaimer:** This forecast is based on fine particulates only; ozone is not included. Forecasts may be wrong; use at own risk. Use caution as conditions can change quickly. See your health professional as needed. Smoke sensitive groups should take appropriate precautions.

Additional Links

California Smoke Blog -- <http://californiasmokeinfo.blogspot.com/>
 Fire and Smoke Map -- <https://fire.airnow.gov/>

Inciweb - Windy Fire -- <https://inciweb.nwcg.gov/incident/7841/>



Issued by USFS Wildland Fire Air Quality Response Program -- www.wildlandfiresmoke.net
 Southern Sierra - Sequoia Current Outlook -- tools.airfire.org/outlooks/SouthernSierra-Sequoia
 *Smoke and Health Info -- www.airnow.gov/index.cfm?action=smoke.index