

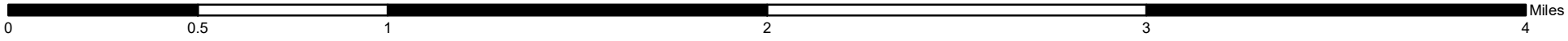
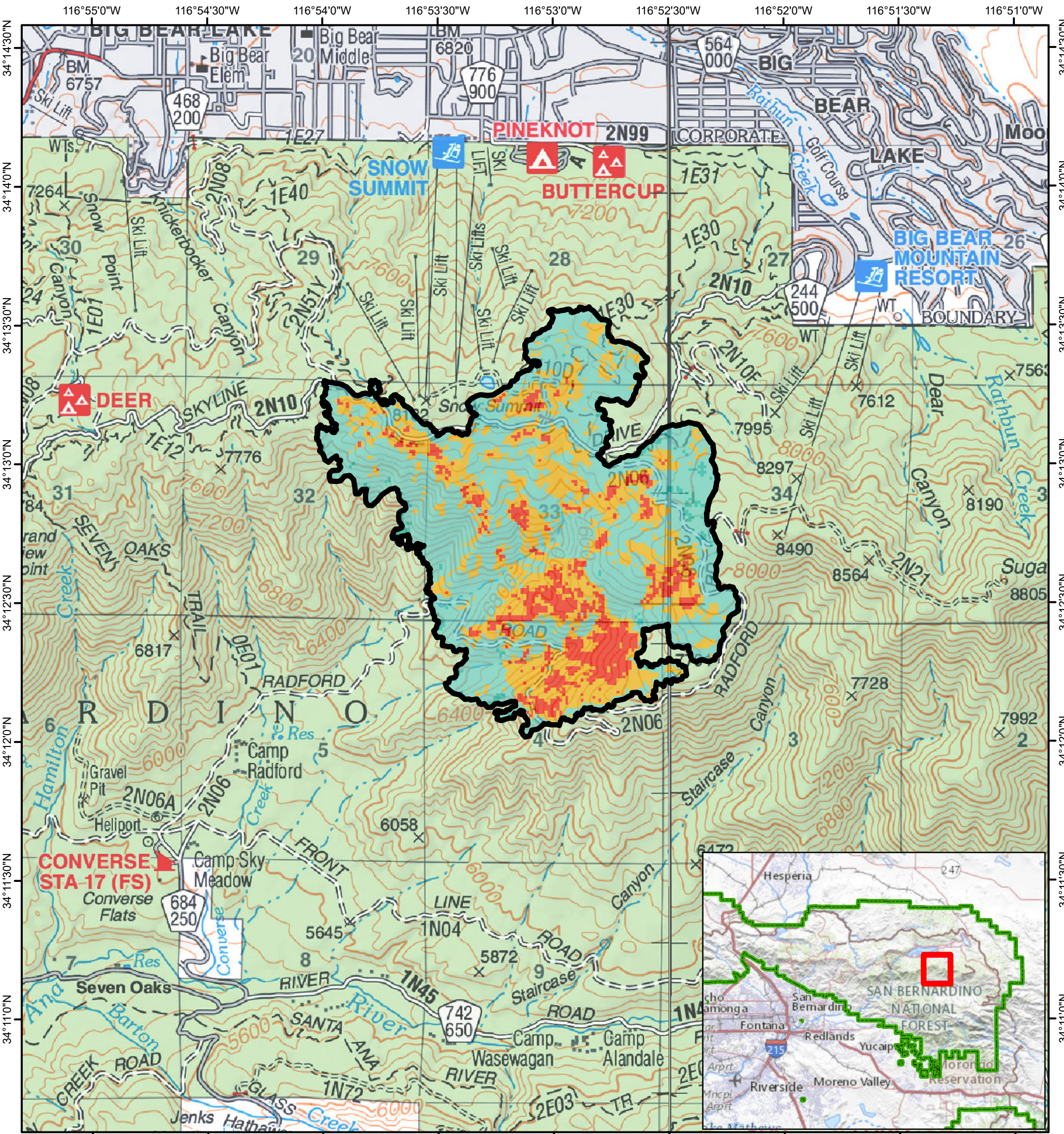


# SOIL BURN SEVERITY

## RADFORD FIRE BAER ASSESSMENT 2022



Radford 2022  
Burn  
Area  
Emergency  
Response



Soil Burn Severity	Acres	Percent
High	115	11%
Moderate	318	29%
Low	611	57%
Unburned	32	3%
<b>Grand Total</b>	<b>1,076</b>	<b>100%</b>

- Radford Fire Burn Boundary 9/13/2022
- Private Land
- National Forest Land



Map Date: 9/22/2022

Burned Acres 100% on National Forest Land

Mountaintop Ranger District, San Bernardino National Forest, Region 5

This map is a product of a Burned Area Emergency Response (BAER) Team rapid assessment. This product is reproduced from geospatial information prepared by the USDA Forest Service. Geospatial information and GIS product accuracy may vary. Using GIS products for purposes other than those for which they were created may yield inaccurate or misleading results. USDA Forest Service reserves the right to correct, update, modify or replace GIS products without notification. Radford Fire soil burn severity derived from 9/15/2022 Landsat 8 BARC256 and subsequent adjustments per field observations.