

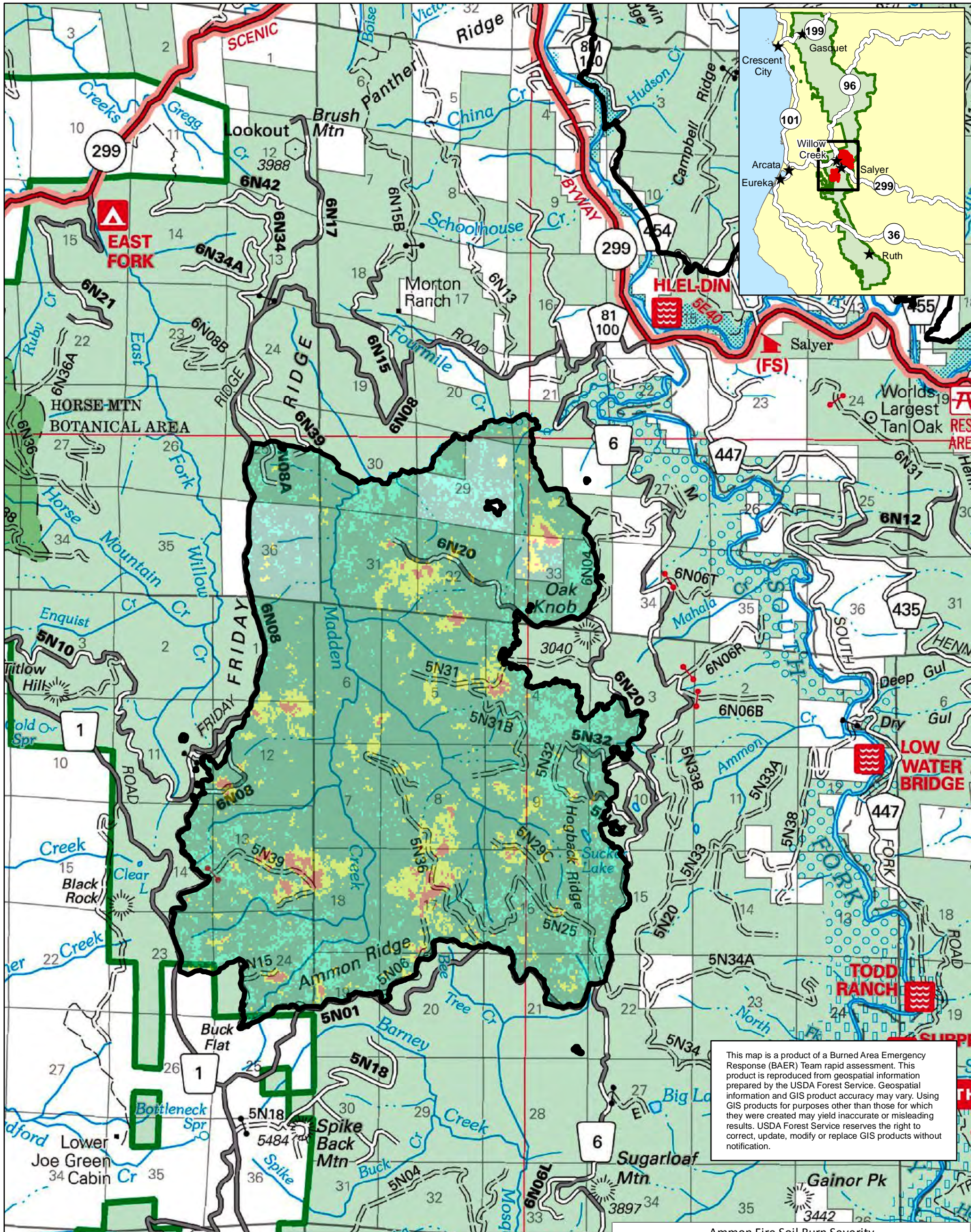


# Soil Burn Severity

## Lightning Complex BAER Assessment 2022 Ammon Fire

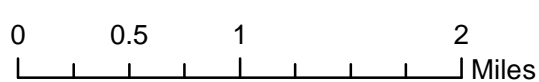


Burned Area  
Emergency  
Response



This map is a product of a Burned Area Emergency Response (BAER) Team rapid assessment. This product is reproduced from geospatial information prepared by the USDA Forest Service. Geospatial information and GIS product accuracy may vary. Using GIS products for purposes other than those for which they were created may yield inaccurate or misleading results. USDA Forest Service reserves the right to correct, update, modify or replace GIS products without notification.

- Soil Burn Severity**
- Low
  - Unburned/V.Low
  - Moderate
  - High
  - Lightning Complex Perimeter



Ammon Fire Soil Burn Severity				
Soil Burn Severity	Total Acres (Approx)	Acres of Soil Burn Severity by Land Ownership		
		Percent	USDA FOREST SERVICE	Private
High	197	2	189	7
Low	9093	79	8341	754
Moderate	963	8	917	46
Unburned/V.Low	1204	11	1069	135
<b>Total Acres</b>	<b>11457</b>		<b>10516</b>	<b>941</b>