



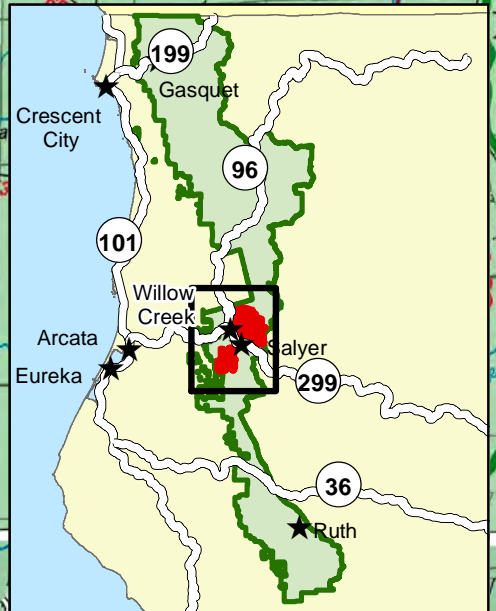
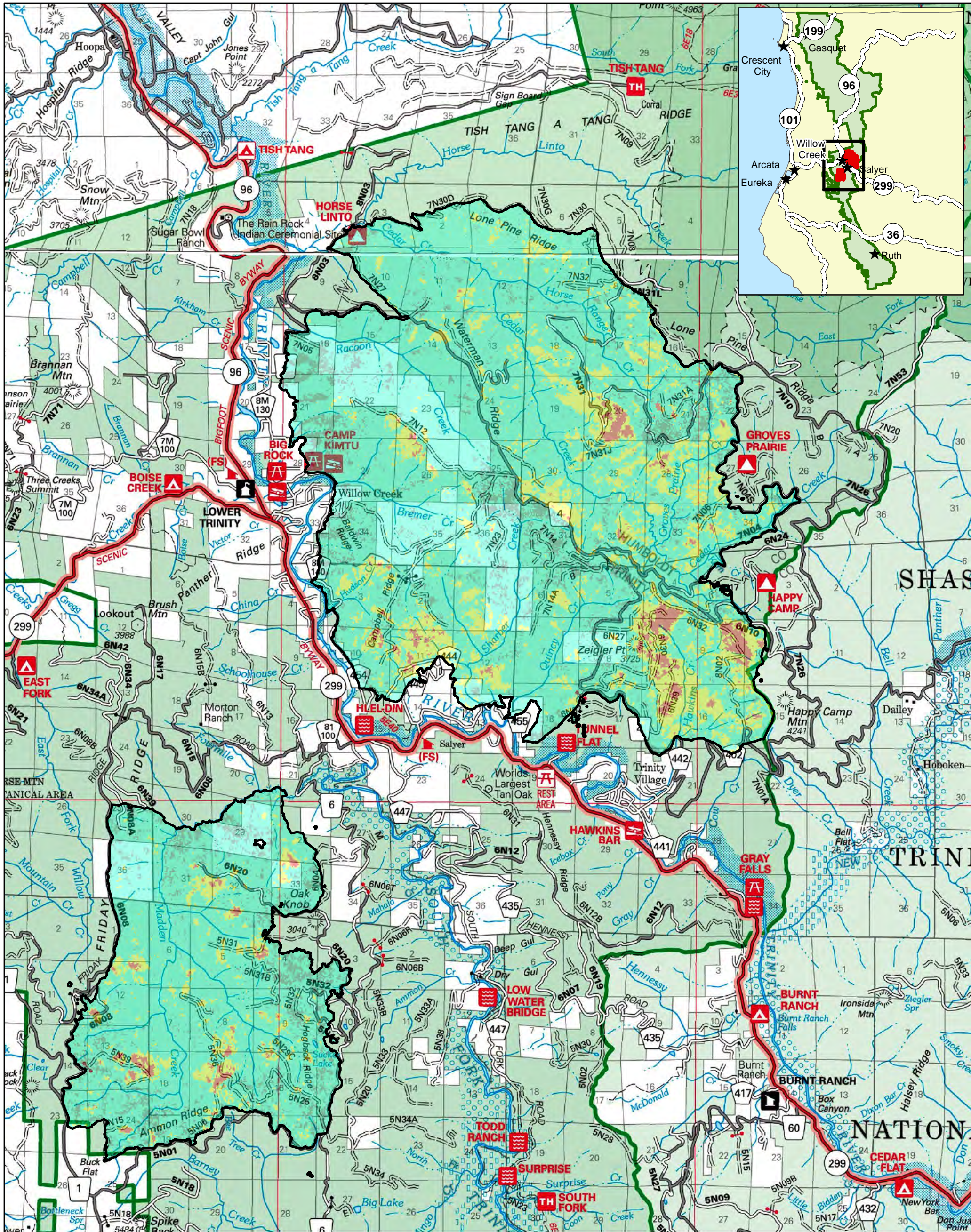
# Soil Burn Severity

## Lightning Complex BAER Assessment 2022

### Ammon and Campbell Fires



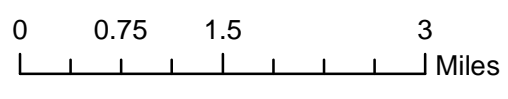
Burned Area  
Emergency  
Response



#### Soil Burn Severity

- Unburned/V.Low
- Low
- Moderate
- High

LightningComplex\_BAER\_Perimeter



This map is a product of a Burned Area Emergency Response (BAER) Team rapid assessment. This product is reproduced from geospatial information prepared by the USDA Forest Service. Geospatial information and GIS product accuracy may vary. Using GIS products for purposes other than those for which they were created may yield inaccurate or misleading results. USDA Forest Service reserves the right to correct, update, modify or replace GIS products without notification.