



Ursus Fire Trail Closure Forest Order: 01-15-01-22-17 Rocky Mountain Ranger District

Trail Closure

Trail Closures

MVUM Road Allow

— Non-automated post other

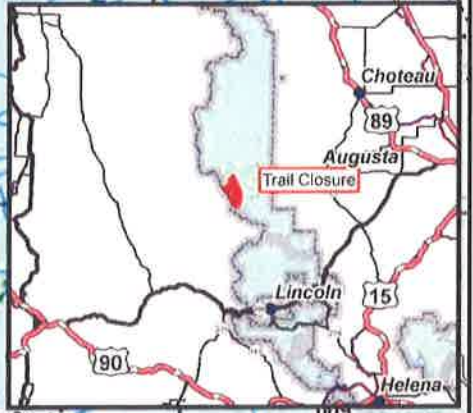
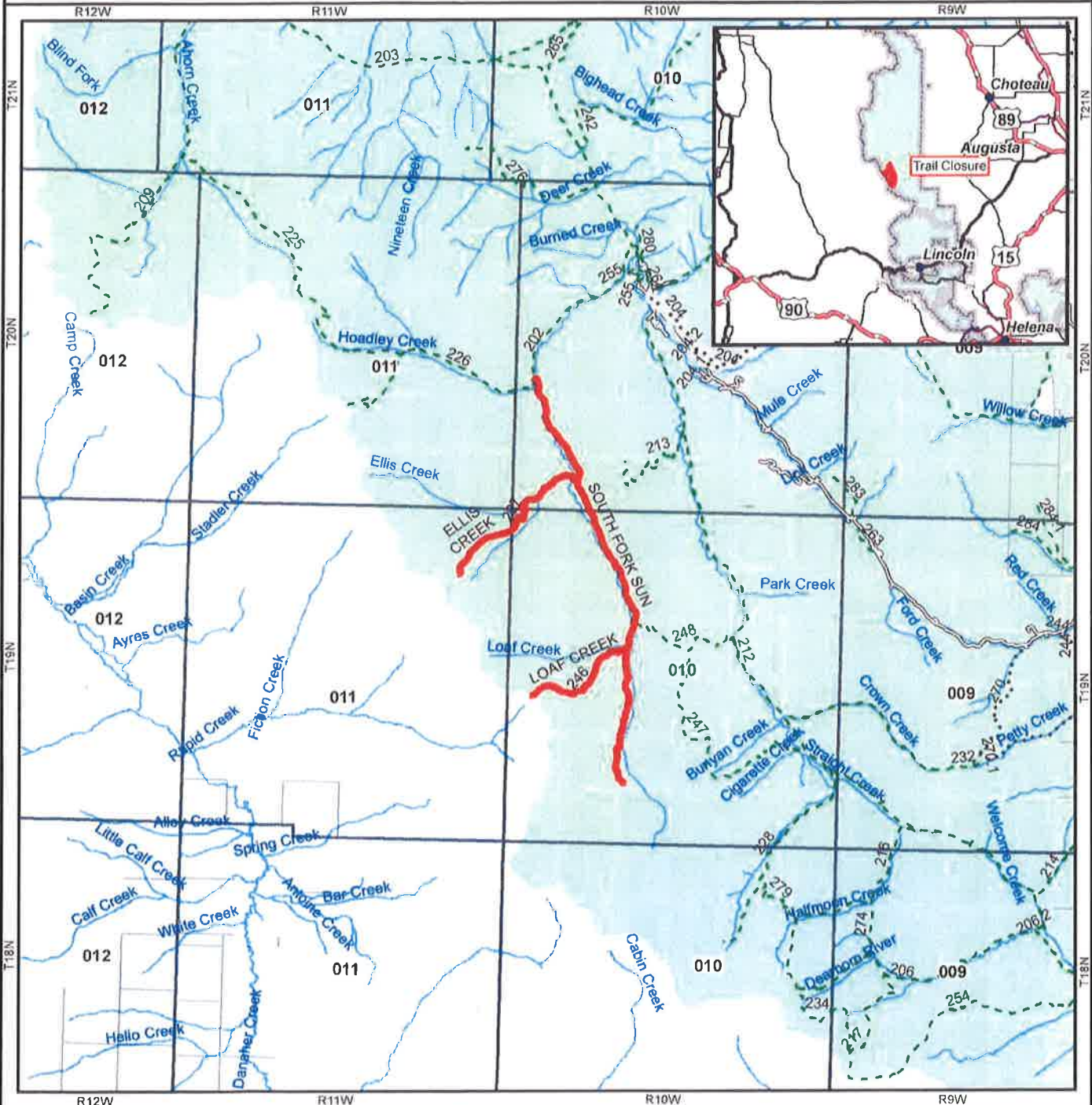
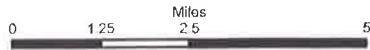
SYMBOL

- 9 Trail Open to Motorcycles Only, Yearlong
- 10 Trail Open to Motorcycles Only, Seasonal
- 17 Trail Open to Wheeled Vehicles 50' or Less in Width, Seasonal

MVUM Road Allow

SYMBOL

- Open to Highway Legal Vehicles Only, Yearlong
- Open to Highway Legal Vehicles Only, Seasonal



The Forest Service uses the most current and complete data available. GIS data and product accuracy may vary. They may be: developed from sources of differing accuracy, accurate only at certain scales, based on modeling or interpretation, incomplete while being created or revised, etc. Using GIS products for purposes other than those, for which they were created, may yield inaccurate or misleading results. The Forest Service reserves the right to correct, update, modify, or replace, GIS products without notification. For more information please contact:
Helena-Lewis and Clark National Forest, 2880 Skyway Drive, Helena, MT 59602, Phone (406) 449-5201
By: KeikiHowe, 9/7/2022
T:\FS\NFS\HelenaLewisClark\Program\6800InformationMgmt\GIS\Workspace\khowe\Projects\UrsusFire_Closure_972022.mxd\UrsusFire_Closure_972022