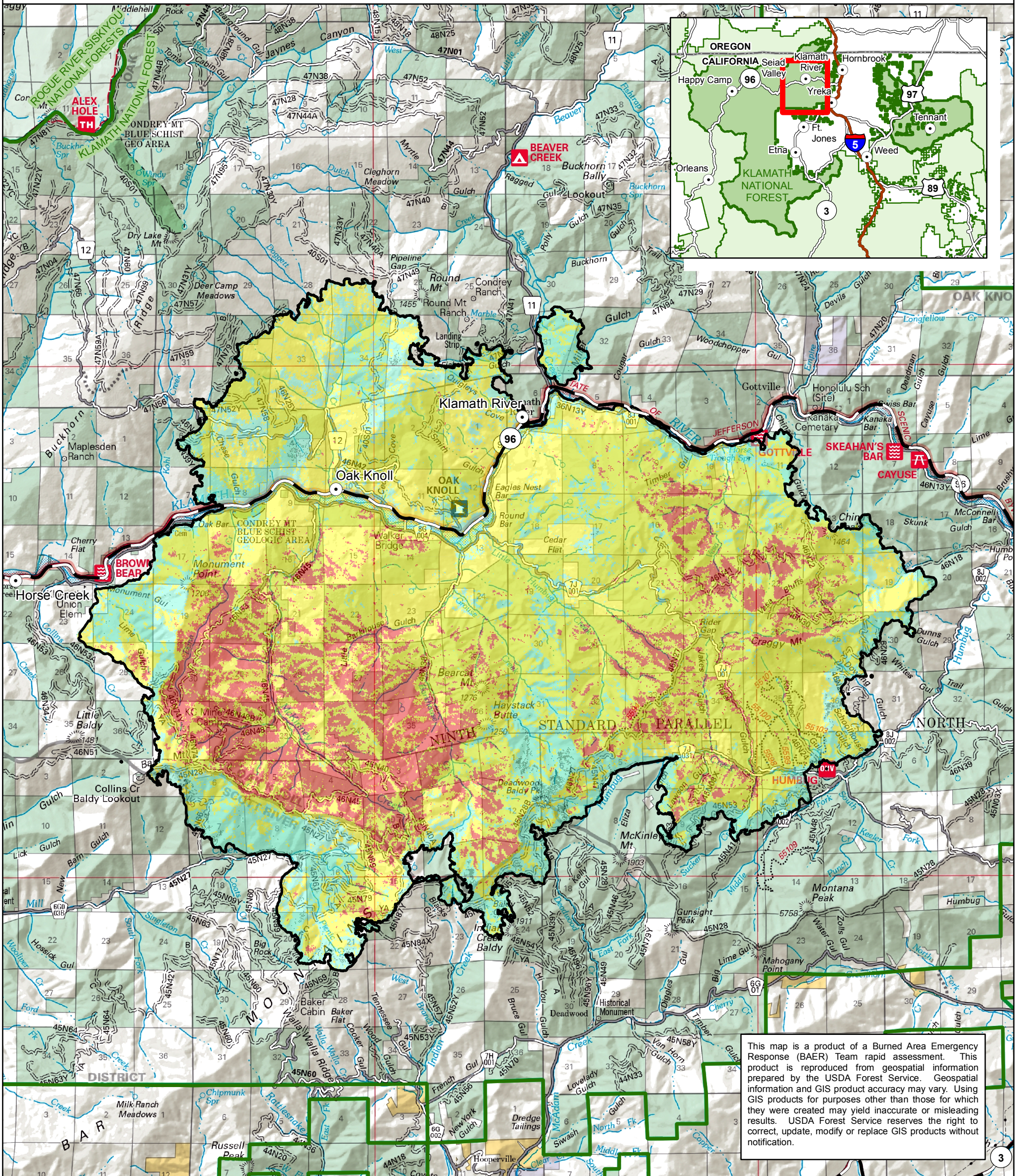




# Soil Burn Severity

## McKinney Fire BAER Assessment 2022



This map is a product of a Burned Area Emergency Response (BAER) Team rapid assessment. This product is reproduced from geospatial information prepared by the USDA Forest Service. Geospatial information and GIS product accuracy may vary. Using GIS products for purposes other than those for which they were created may yield inaccurate or misleading results. USDA Forest Service reserves the right to correct, update, modify or replace GIS products without notification.

### Soil Burn Severity

- High
- Moderate
- Low
- Unburned



McKinney Fire Perimeter  
8/18/2022

- National Forest Boundary
- National Forest Land
- Private Land

### McKinney Fire Soil Burn Severity:

Soil Burn Severity	%	Total Acres (Approx.)	Acres of Soil Burn Severity by Land Ownership	
			USDA Forest Service	Private
High	16	9,373.4	6,327.4	3,046.0
Moderate	63	37,860.9	24,420.4	13,440.5
Low	21	12,549.4	8,163.8	4,385.6
Unburned / Very Low	1	541.8	404.8	136.9
<b>Grand Total</b>	<b>100</b>	<b>60,325.4</b>	<b>39,316.3</b>	<b>21,009.1</b>

0 1 2 4 Miles

