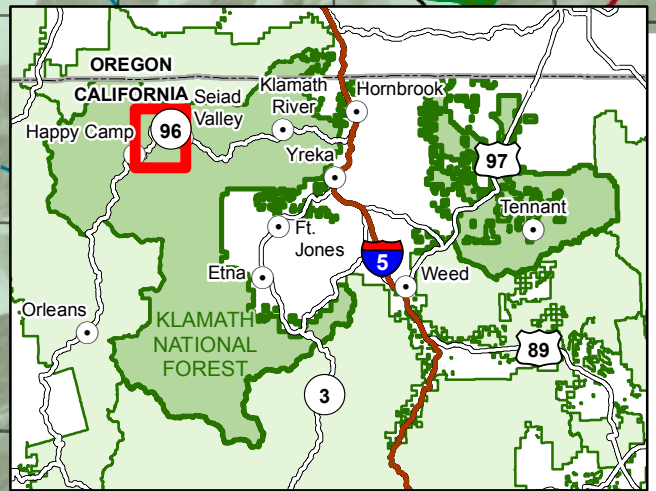
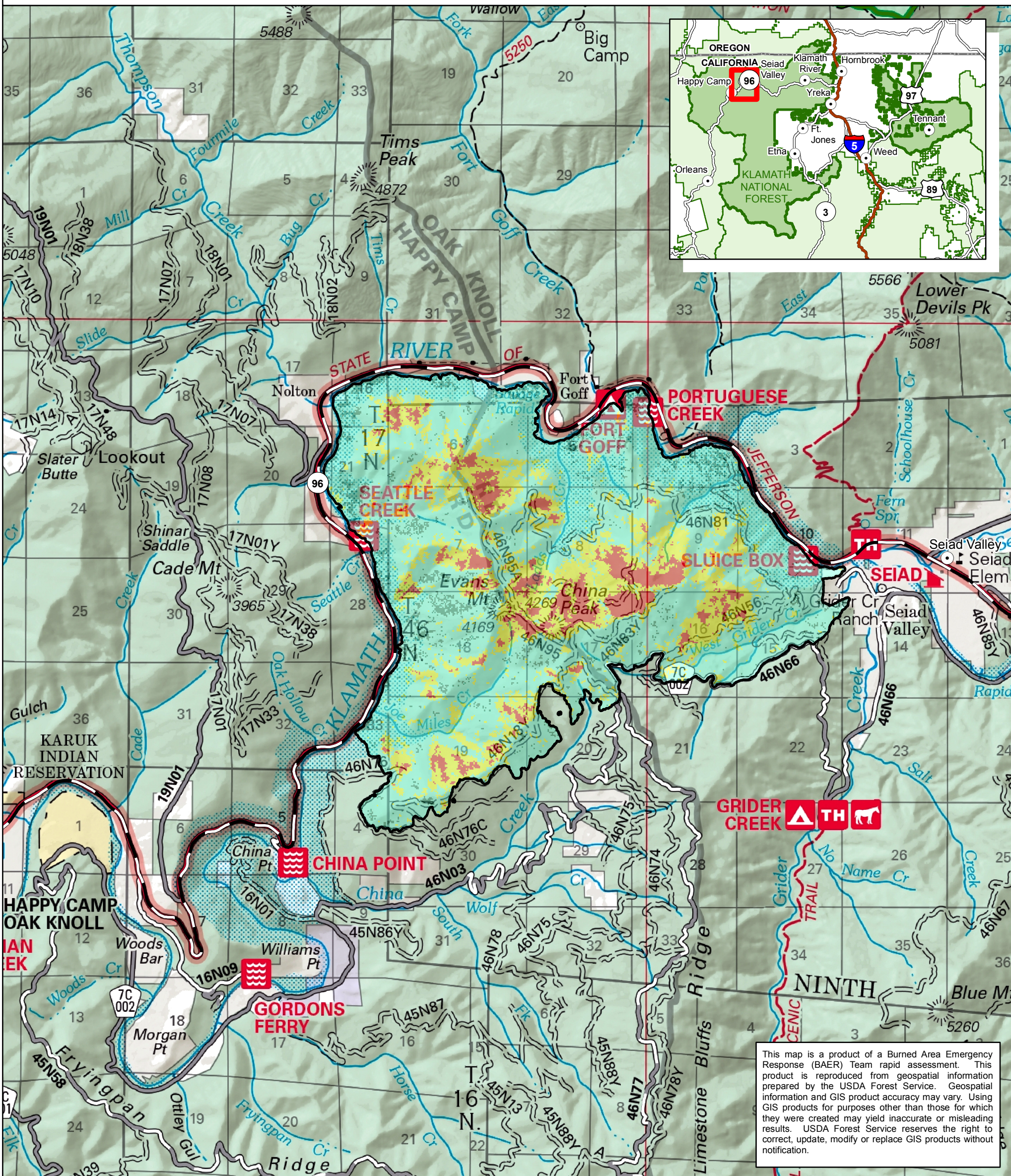


Soil Burn Severity

Yeti Fire BAER Assessment 2022



This map is a product of a Burned Area Emergency Response (BAER) Team rapid assessment. This product is reproduced from geospatial information prepared by the USDA Forest Service. Geospatial information and GIS product accuracy may vary. Using GIS products for purposes other than those for which they were created may yield inaccurate or misleading results. USDA Forest Service reserves the right to correct, update, modify or replace GIS products without notification.

- Soil Burn Severity**
- High
 - Moderate
 - Low
 - Unburned
- Other Symbols**
- Yeti Fire Perimeter 8/18/2022
 - National Forest Boundary
 - National Forest Land
 - Private Land

Yeti Fire Soil Burn Severity:

Soil Burn Severity	%	Total Acres (Approx.)	Acres of Soil Burn Severity by Land Ownership	
			USDA Forest Service	Private
High	7	572.4	572.4	0.0
Moderate	21	1,692.1	1,690.7	1.4
Low	65	5,160.5	5,109.1	51.5
Unburned / Very Low	6	454.1	435.2	18.9
Grand Total	100	7,879.1	7,807.3	71.8

