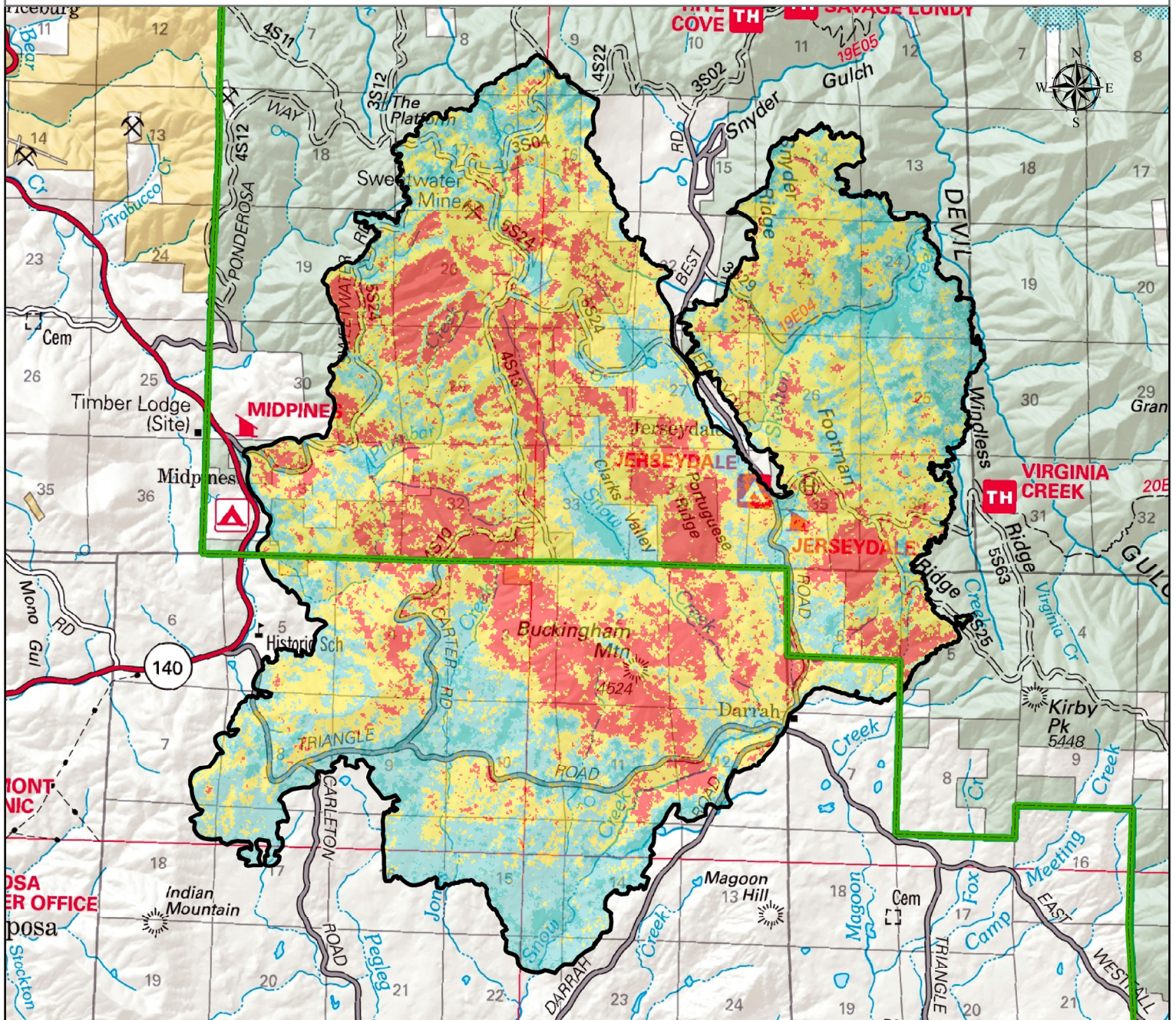




SOIL BURN SEVERITY

OAK FIRE BAER ASSESSMENT 2022



Oak Fire Soil Burn Severity :

Soil Burn Severity	%	Total Acres (Approx.)	Acres of Soil Burn Severity by Land Ownership		
			USDA Forest Service	Bureau of Land Management	Private
High	21	4,003.41	2,324.07	23.46	1,655.88
Moderate	45	8,800.17	4,569.92	17.05	4,213.19
Low	27	5,279.29	1,763.29	12.50	3,503.50
Unburned	7	1,397.42	546.97	1.83	848.62
Grand Total	100	*19,480.29	9,204.26	54.84	10,221.20

*Total size of fire is different than that reported by the Incident because the BAER assessment perimeter includes several unburned islands (totaling approx. 240 acres) within the perimeter of the fire.

Bass Lake Ranger District, Sierra National Forest, Region 5

- Oak Fire Perimeter 8/4/2022
- Sierra National Forest Boundary
- Bureau of Land Management Land
- Private Land
- National Forest Land

This map is a product of a Burned Area Emergency Response (BAER) Team rapid assessment. This product is reproduced from geospatial information prepared by the USDA Forest Service. Geospatial information and GIS product accuracy may vary. Using GIS products for purposes other than those for which they were created may yield inaccurate or misleading results. USDA Forest Service reserves the right to correct, update, modify or replace GIS products without notification. Oak Fire soil burn severity derived from 8/14/2022 Landsat 8