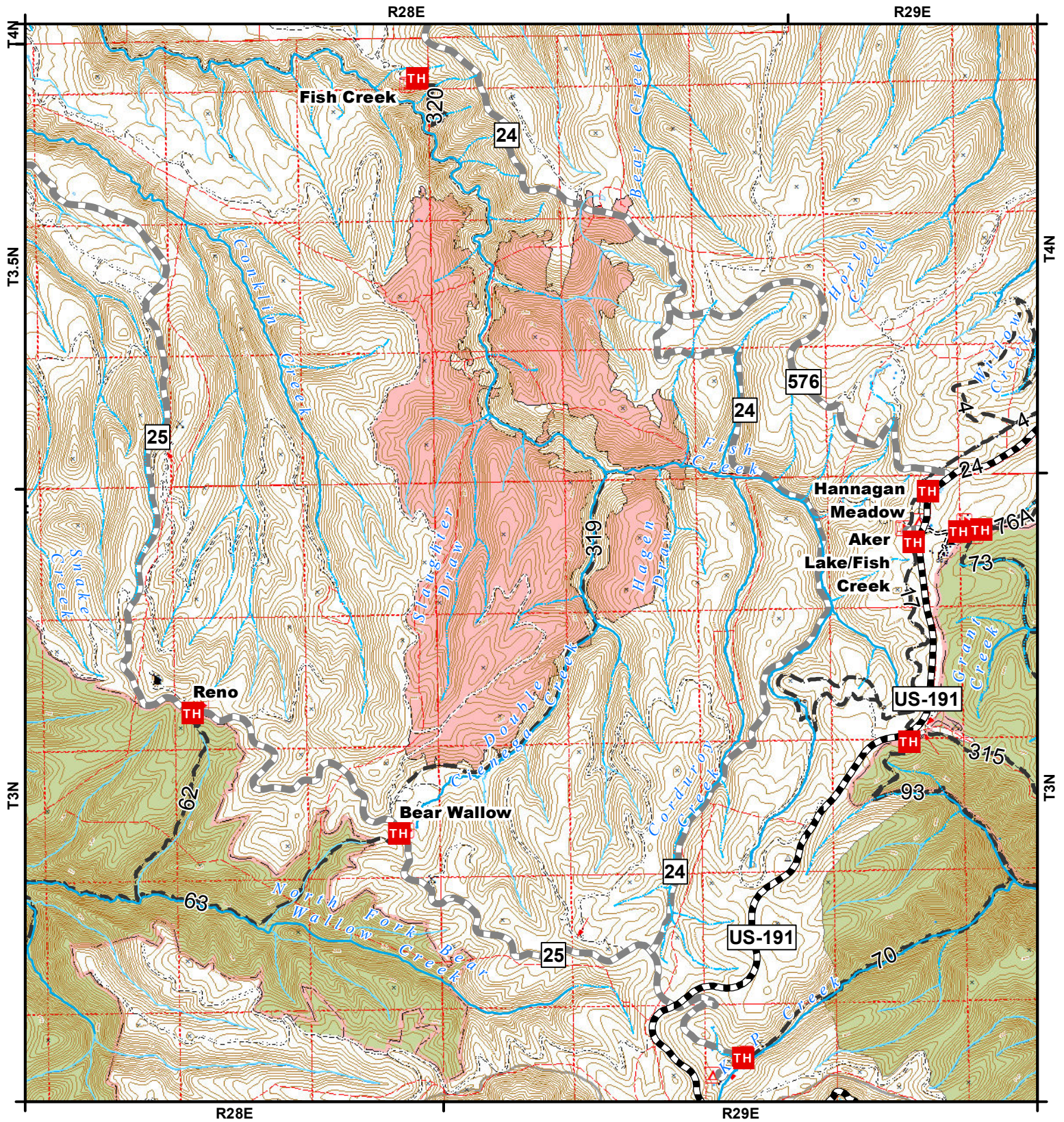




# Fish - 06/18/2022

## Apache-Sitgreaves National Forests - Alpine Ranger District



0.5 0.25 0 0.5  
Miles

### Disclaimer

The USDA Forest Service uses the most current and complete data available. GIS data and product accuracy may vary. Using GIS products for purposes other than those for which they were intended may yield inaccurate or misleading results. The USDA Forest Service reserves the right to correct, update, modify, or replace GIS products without notification. This map is not a legal land line or ownership document. Public lands are subject to change and leasing, and may have access restrictions; check with local offices. Obtain permission before entering private land.

### Recreation Site Point

- TH** Trailhead
- Fire Perimeter
- Wilderness/Primitive Area
- Trail

ARIZONA  
Apache County

