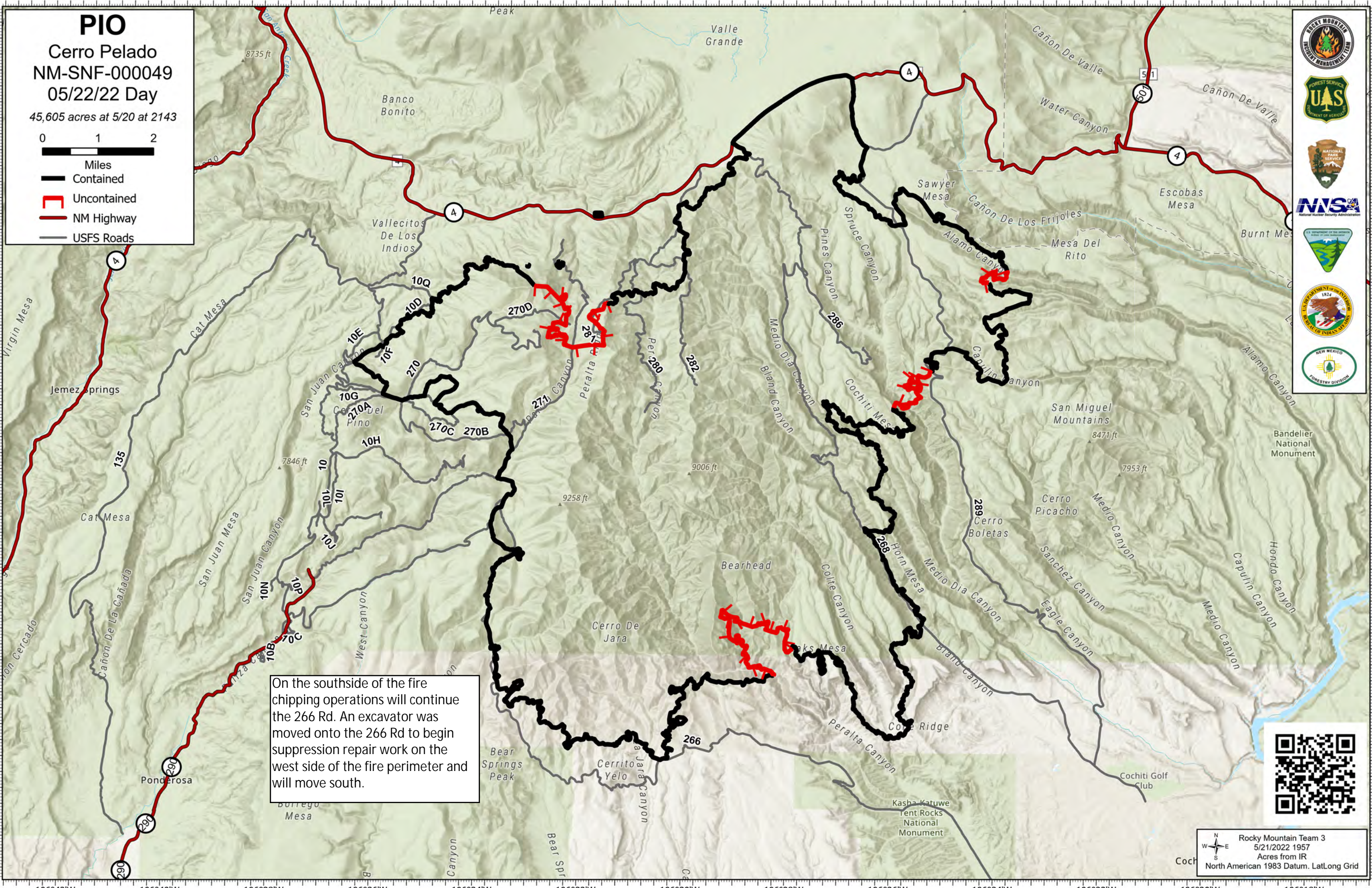


PIO
Cerro Pelado
 NM-SNF-000049
 05/22/22 Day
 45,605 acres at 5/20 at 2143

0 1 2
 Miles

— Contained
 — Uncontained
 — NM Highway
 — USFS Roads



On the southside of the fire chipping operations will continue the 266 Rd. An excavator was moved onto the 266 Rd to begin suppression repair work on the west side of the fire perimeter and will move south.



Rocky Mountain Team 3
 5/21/2022 1957
 Acres from IR
 North American 1983 Datum. Lat/Long Grid