

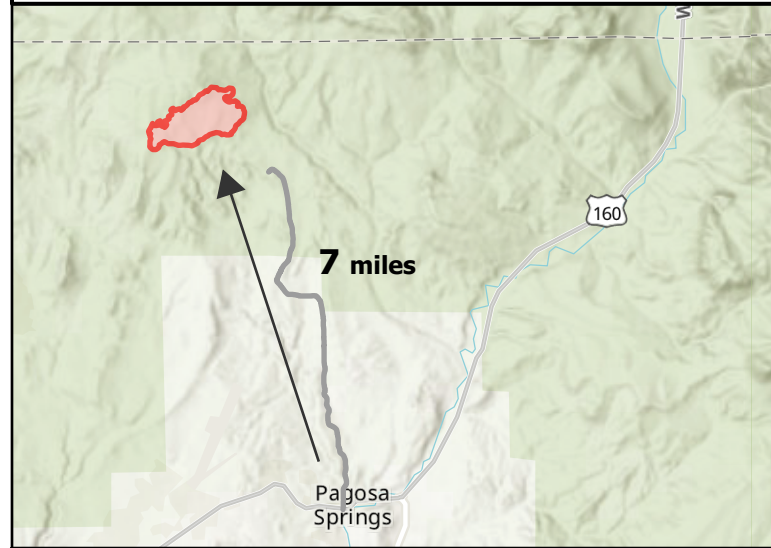
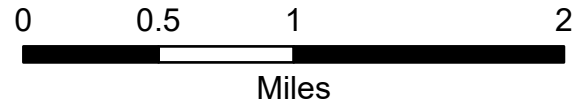
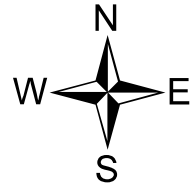
# Public Information

Plumtaw  
COSJF000203

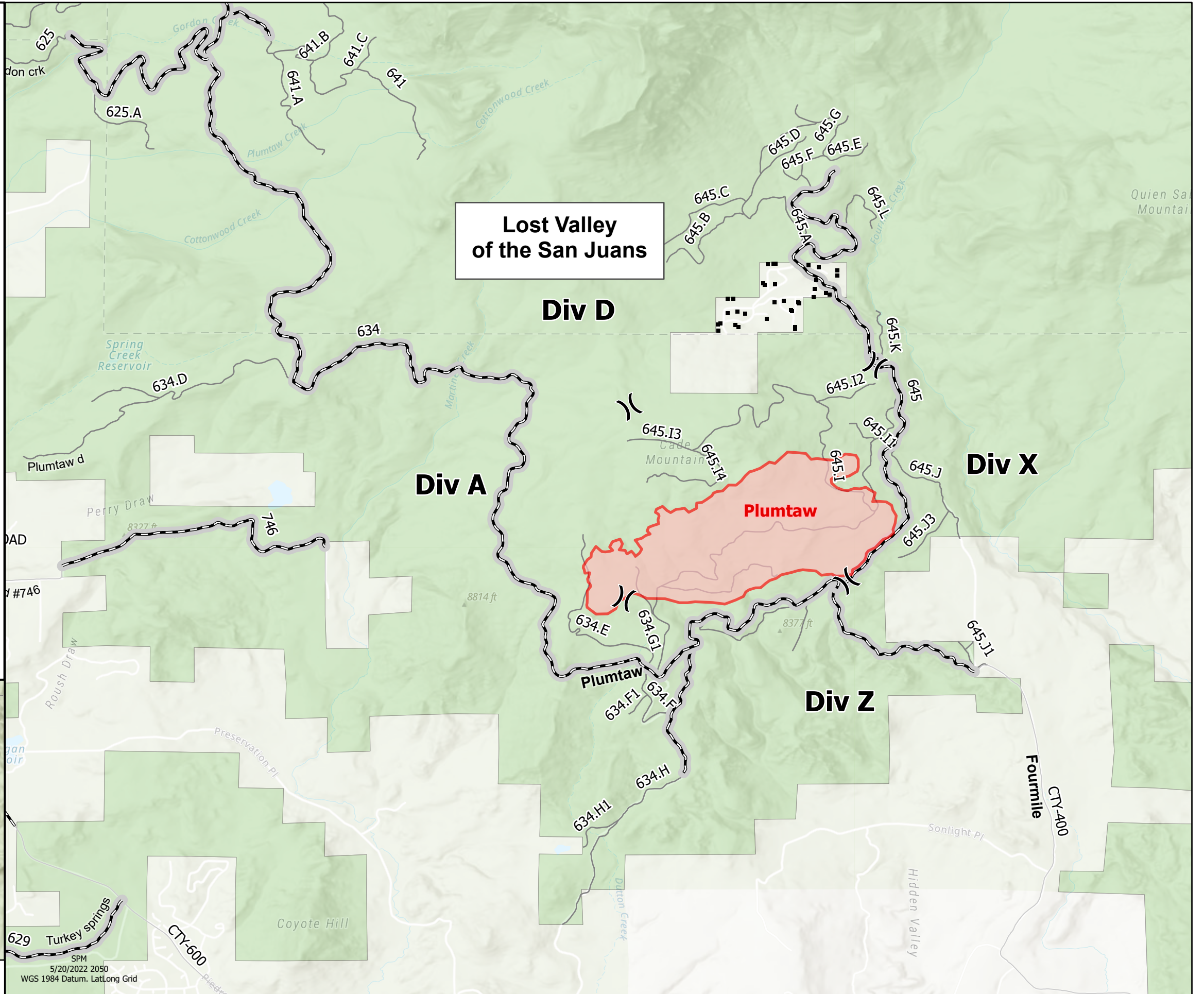
5/21/2022 Day

727 acres at 5/20/2022 @ 1615

- Structures
- Division Break
- Wildfire Daily Fire Perimeter
- Roads Open to All Vehicles, Yearlong
- Roads Open to All Vehicles, Seasonal
- Other Public Roads
- Non-Motorized Roads
- Private Lands
- National Forest



Proximity Map



SPM  
5/20/2022 2050  
WGS 1984 Datum, Lat/Long Grid