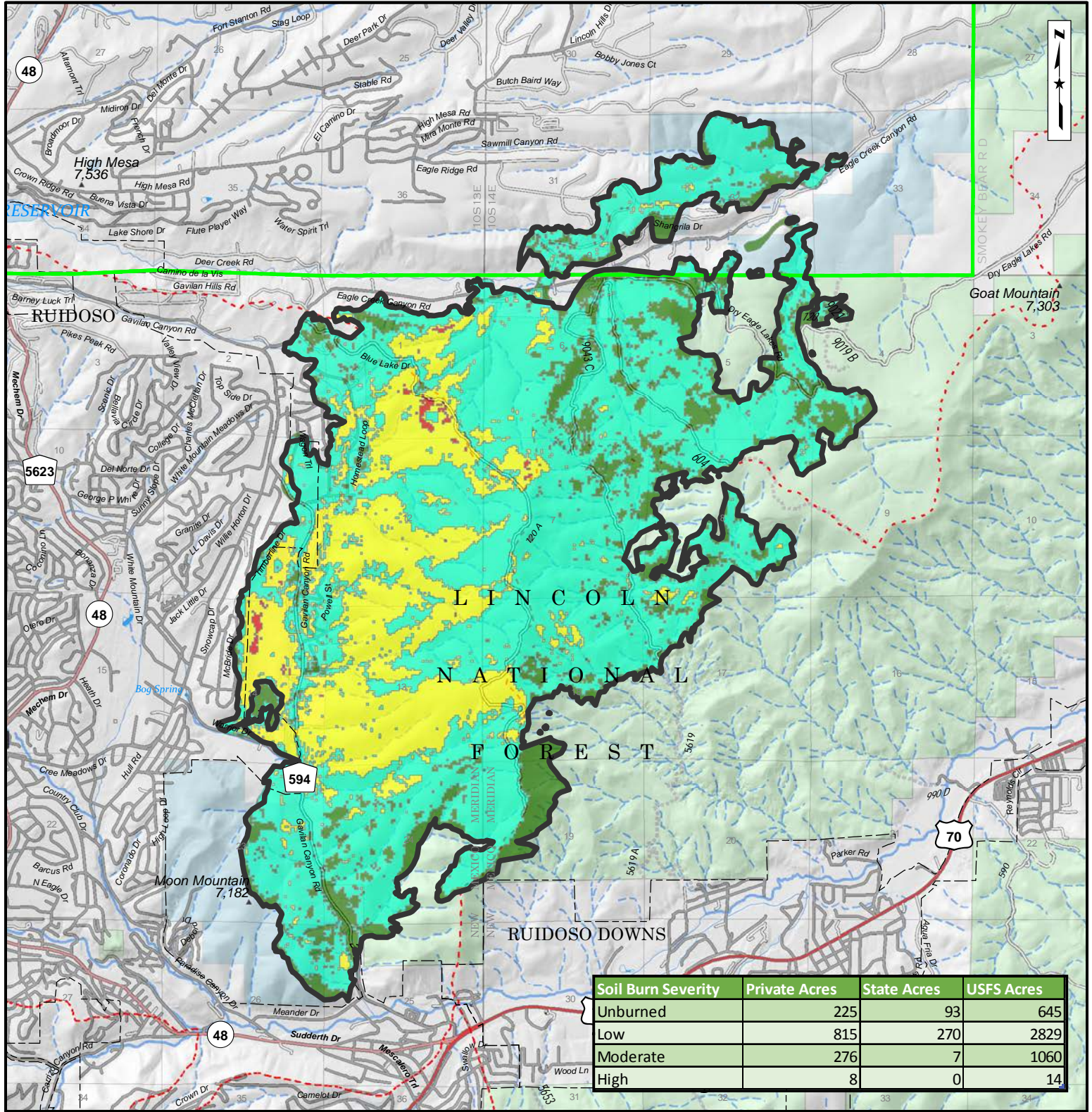


McBride Fire BAER Soil Burn Severity

McBride BAER - Lincoln National Forest



Soil Burn Severity	Private Acres	State Acres	USFS Acres
Unburned	225	93	645
Low	815	270	2829
Moderate	276	7	1060
High	8	0	14

0 0.5 1 2 Miles

Disclaimer

This product is a product of USFS BAER rapid assessment. Further information concerning the accuracy and appropriate uses of this data may be obtained from the various sources. The USDA Forest Service, makes no warranty, expressed or implied, including the warranties of merchantability and fitness for a particular purpose, nor assumes any legal liability or responsibility for the accuracy, reliability, completeness or utility of these geospatial data, or for the improper or incorrect use of these geospatial data. These geospatial data and related maps or graphics are not legal documents and are not intended to be used as such. The data and maps may not be used to determine title, ownership, legal descriptions, boundaries, legal jurisdiction, or restrictions that may be in place on either public or private land. Natural hazards may or may not be depicted on the data and maps, and land users should exercise due caution. The data is dynamic and may change over time. The user is responsible to verify the limitations of the geospatial data and to use the data accordingly.

Date: 4/28/2022

Legend

- Fire Perimeter 4/18/2022
- McBride Soil Burn Severity
 - Unburned
 - Low
 - Moderate
 - High
- Administrative FS Boundary
- Ranger District Boundary
- USDA Forest Service
- Private
- State

