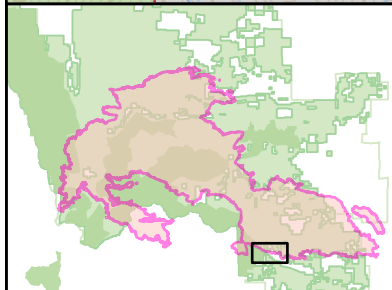
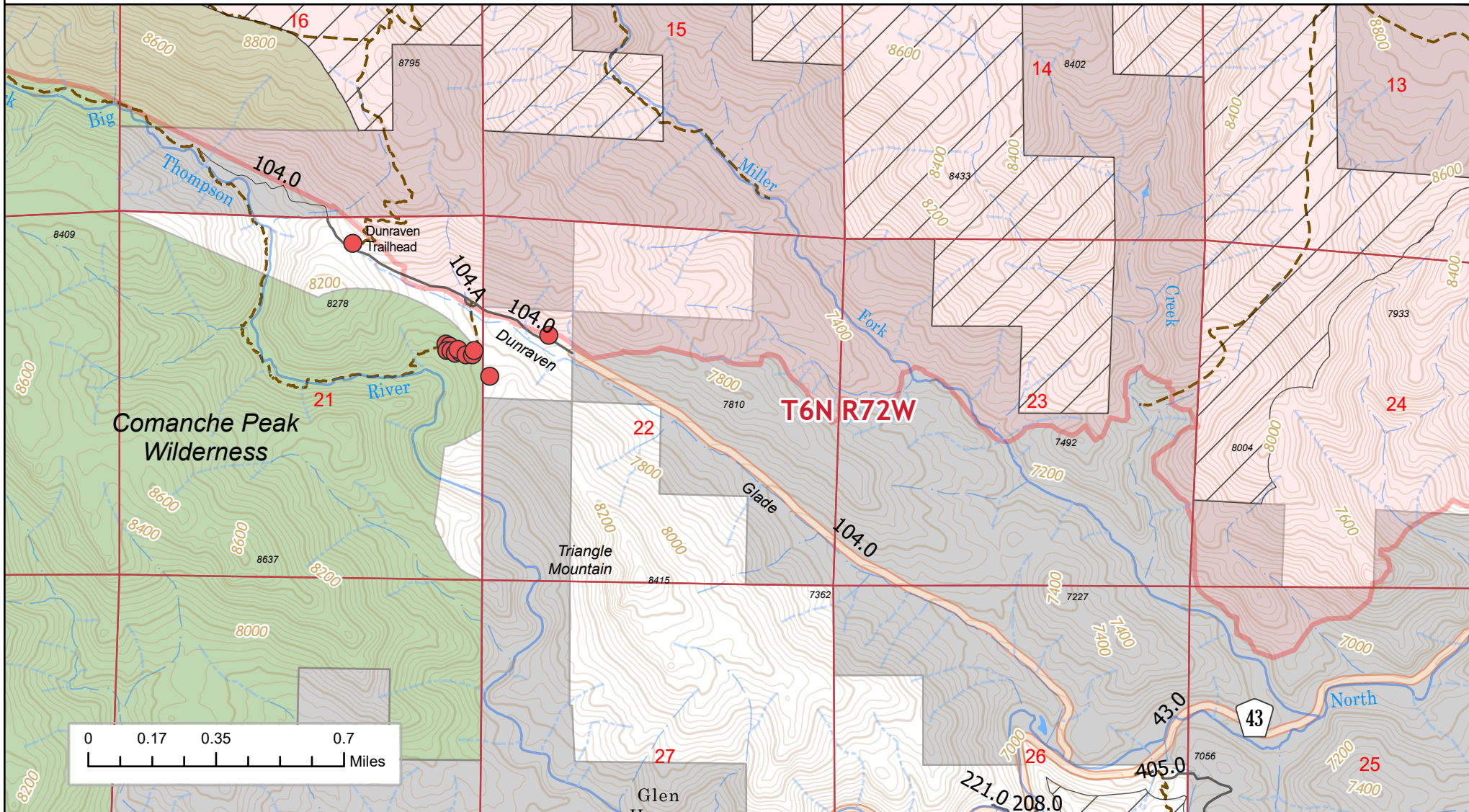


# Cameron Peak - Pile Burning and Log Decks



- |  |  |   |  |
|--|--|---|--|
| <span style="color: red;">●</span> Burn Pile               | <span style="color: yellow;">●</span> Completed    | <span style="color: grey;">●</span> Other   | <span style="border: 1px solid red; display: inline-block; width: 15px; height: 10px;"></span> Cameron Peak Perimeter        |
| <span style="color: blue;">●</span> Potential Burn Pile    | <span style="color: magenta;">●</span> Deck Moved  | <span style="border: 1px solid black; display: inline-block; width: 15px; height: 10px;"></span> Roadless Area        | <span style="border: 1px solid black; display: inline-block; width: 15px; height: 10px;"></span> National Forest System Land |
| <span style="color: green;">●</span> Unavailable Burn Pile | <span style="color: brown;">●</span> Firewood Pile | <span style="border-bottom: 1px solid orange; display: inline-block; width: 15px;"></span> County Road                | <span style="background-color: grey; display: inline-block; width: 15px; height: 10px;"></span> Non-Federal                  |
| <span style="color: purple;">●</span> Unknown              | <span style="color: teal;">●</span> Needs Work     | <span style="border-bottom: 1px solid black; display: inline-block; width: 15px;"></span> National Forest System Road | <span style="background-color: green; display: inline-block; width: 15px; height: 10px;"></span> Wilderness                  |
| <span style="color: orange;">●</span> Material Moved       | <span style="color: blue;">●</span> Needs checking | <span style="border-bottom: 1px solid black; display: inline-block; width: 15px;"></span> Other Roads                 |  |

