

Magic Sky 3 Contract Map

Arapaho Roosevelt National Forests (10)
Canyon Lakes Ranger District (05)
Larimer County (69), Colorado (8)

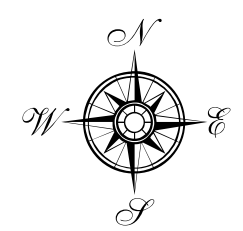
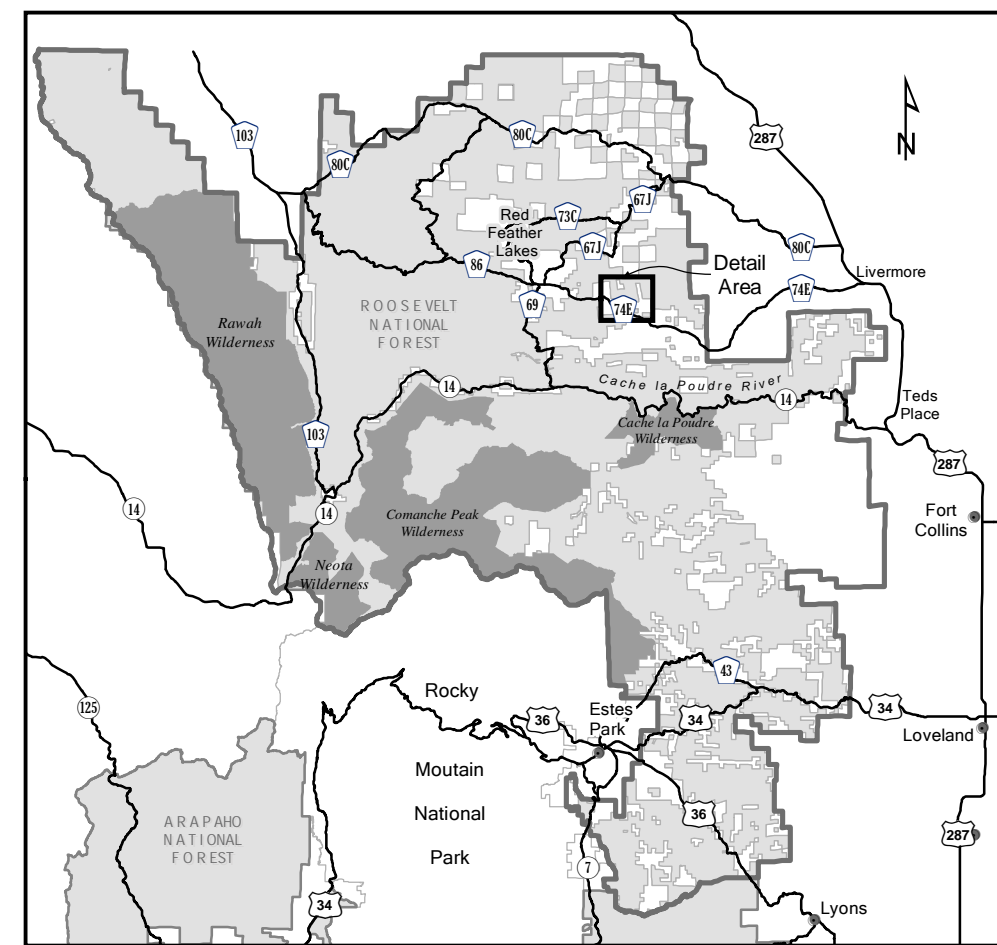
Legend

- Contract Area Boundary
- Treatment Unit Boundary Section C.4.1.5
- National Forest
- Non-Fed/Private
- Lake
- Existing Road C.4.5.5
- Private Road
- Access Road
- Streamcourse Protection C.4.5.2
- Powerline

① Cutting Unit Identification Number

Resource Protection - C.4.5

- Existing Road
- Private Road
- Gate
- Fence
- Culvert
- Monument
- Meadow Protection C.4.5.2



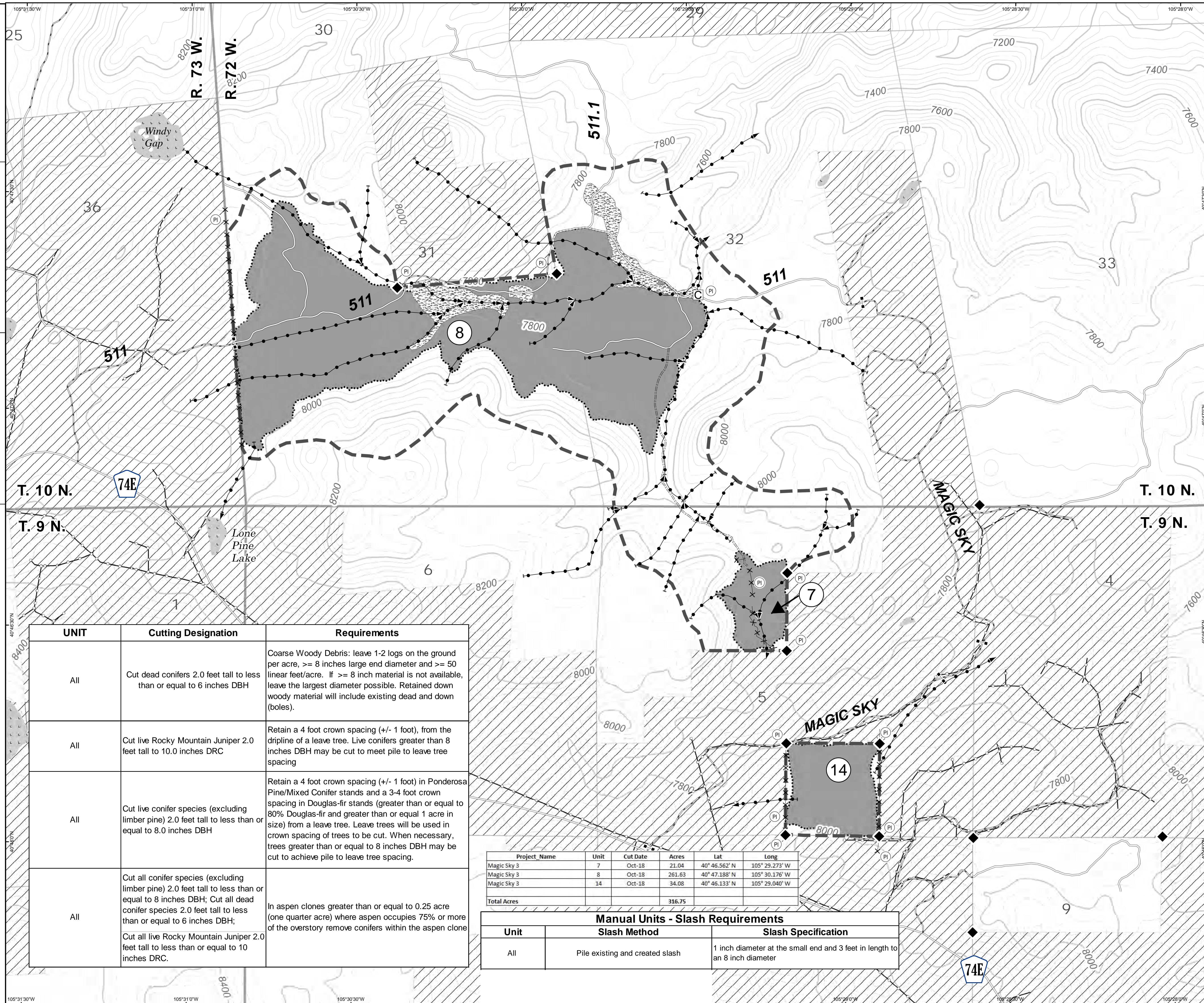
Scale 1:7,200

1 inch = 600 feet

Landlines are approximate
Township/Range based on 6th PM Colorado
Contour Interval is 40 feet



Original Version: 10/26/2018
Authors: jnoylor & sfrey
Document Path: T:\FS\NFS\ArapahoRoosevelt\Project\CLRD\51XX\Fuels\magic_sky\Implement\MagicSky3\WXD\MagicSky3_Contract.mxd
Coordinate System: NAD 1983 UTM Zone 13N
Projection: Transverse Mercator
Datum: North American 1983



UNIT	Cutting Designation	Requirements
All	Cut dead conifers 2.0 feet tall to less than or equal to 6 inches DBH	Coarse Woody Debris: leave 1-2 logs on the ground per acre, >= 8 inches large end diameter and >= 50 linear feet/acre. If >= 8 inch material is not available, leave the largest diameter possible. Retained down woody material will include existing dead and down (boles).
All	Cut live Rocky Mountain Juniper 2.0 feet tall to 10.0 inches DRC	Retain a 4 foot crown spacing (+/- 1 foot), from the dripline of a leave tree. Live conifers greater than 8 inches DBH may be cut to meet pile to leave tree spacing
All	Cut live conifer species (excluding limber pine) 2.0 feet tall to less than or equal to 8.0 inches DBH	Retain a 4 foot crown spacing (+/- 1 foot) in Ponderosa Pine/Mixed Conifer stands and a 3-4 foot crown spacing in Douglas-fir stands (greater than or equal to 80% Douglas-fir and greater than or equal 1 acre in size) from a leave tree. Leave trees will be used in crown spacing of trees to be cut. When necessary, trees greater than or equal to 8 inches DBH may be cut to achieve pile to leave tree spacing.
All	Cut all conifer species (excluding limber pine) 2.0 feet tall to less than or equal to 8 inches DBH; Cut all dead conifer species 2.0 feet tall to less than or equal to 6 inches DBH; Cut all live Rocky Mountain Juniper 2.0 feet tall to less than or equal to 10 inches DRC.	In aspen clones greater than or equal to 0.25 acre (one quarter acre) where aspen occupies 75% or more of the overstory remove conifers within the aspen clone

Project Name	Unit	Cut Date	Acres	Lat	Long
Magic Sky 3	7	Oct-18	21.04	40° 46.562' N	105° 29.273' W
Magic Sky 3	8	Oct-18	261.63	40° 47.188' N	105° 30.176' W
Magic Sky 3	14	Oct-18	34.08	40° 46.133' N	105° 29.040' W
Total Acres			316.75		

Manual Units - Slash Requirements		
Unit	Slash Method	Slash Specification
All	Pile existing and created slash	1 inch diameter at the small end and 3 feet in length to an 8 inch diameter