

Contract Area Map

Red Feather 4 Stewardship

Arapaho and Roosevelt National Forests (10)
Canyon Lakes Ranger District (05)
Larimer County (69), Colorado (8)



Legend

- Contract Area Boundary C.4
- Cutting Unit Boundary C.4
- Exclusion
- National Forest
- Non-Fed/Private
- Meadow Protection H.20
- Wetland Protection H.20
- Lake
- Existing Road B.1 (e)
- Hauling Prohibited H.7
- Hauling Restricted H.7
- Keep Road Open H.7
- Hiking Trail
- Closure to Use by Others RO-K-F.4.1#
- Protected Streamcourse H.19

- D x P Designation by Prescription WO-K-C.3.3.5 #
- D x SP Designation by Species and Diameter WO-K-C.3.5.2 #
- Cutting Unit Identification Number B.1
- Traffic Safety H.9
- Reserve Tree H.19

Protected Improvements

Appendix A - Section III, 3.1

- Road
- Trail
- Fence
- Wooden Fence
- Powerline
- Survey Monument H.11
- Cattle Guard
- Gate
- Trailhead
- Dispersed Campsite

Appendix A, Section II, 2.1

Table A - DBH and Spacing Criteria

Unit(s)	Cutting Designation	Requirements
10E, 10F, 11A, 11B, 11C, 11H, 11I, 11L, 11Y, 13	All dead/dying conifer species 2.0 feet tall to no maximum diameter	<ul style="list-style-type: none"> • Cut all dead/dying trees. • Wildlife Trees: Retain a minimum of 2 wildlife snags per acre, minimum of 10 inches DBH and 25 feet in height • Coarse Woody Debris: leave 1-2 logs on the ground per acre ≥ 10" large end diameter and ≥ 50 linear feet/ac. • 1-2 Trees per acre, meeting these requirements may be felled and left in place to ensure requirements are met.
10E, 10F, 11C, 11H, 11L, 11Y, 13	All live conifer species 2.0 feet tall to no maximum diameter	<ul style="list-style-type: none"> • Retain 5 foot to 7 foot crown spacing between leave trees and pink marked reserved trees/clumps • Where biomass size trees are not located under live non-sawtimber or sawtimber trees, cut biomass trees to a 10 ft. x 10 ft. (+/- 20%) bole spacing. • In ≥ 0.25 acre (one quarter acre) aspen clones and where aspen occupies 75% or more of the overstory, fell and remove conifers within the aspen clone.
11I	Remove all Live lodgepole pine ≥ 5.0' DBH to no maximum diameter	Measured Diameter is a minimum of 5.6 inches at stump height.
11A, 11B	All live conifer species, 2.0 feet tall to no maximum diameter	<ul style="list-style-type: none"> • Retain 4 foot to 6 foot crown spacing between leave trees. • Where biomass size trees are not located under live non-sawtimber or sawtimber trees, cut biomass trees to a 10 ft. x 10 ft. (+/- 20%) bole spacing. • In ≥ 0.25 acre (one quarter acre) aspen clones and where aspen occupies 75% or more of the overstory, fell and remove conifers within the aspen clone.

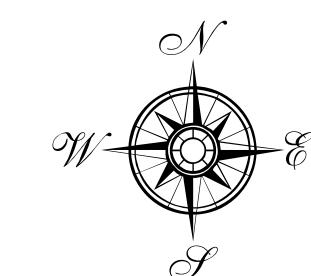
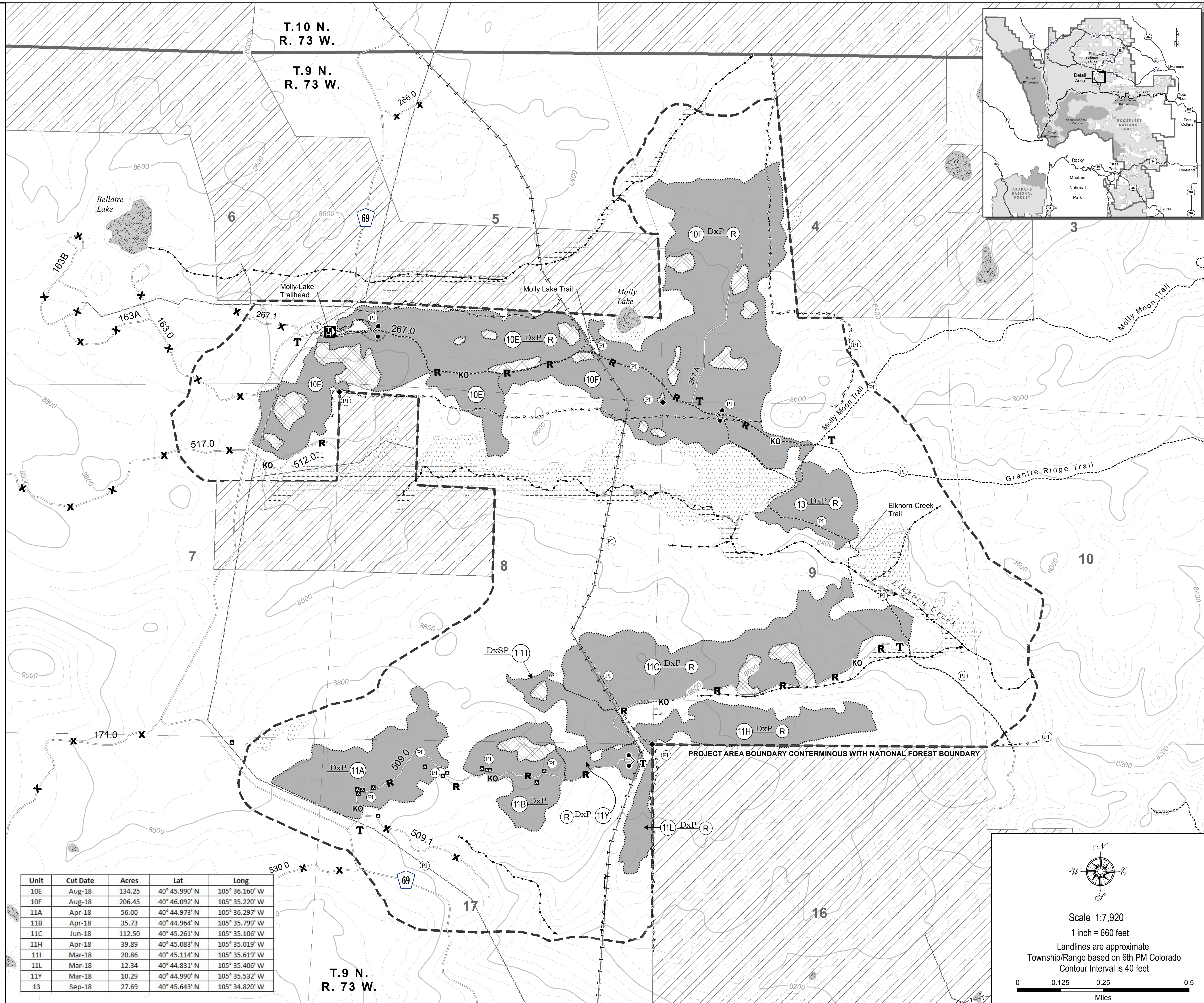
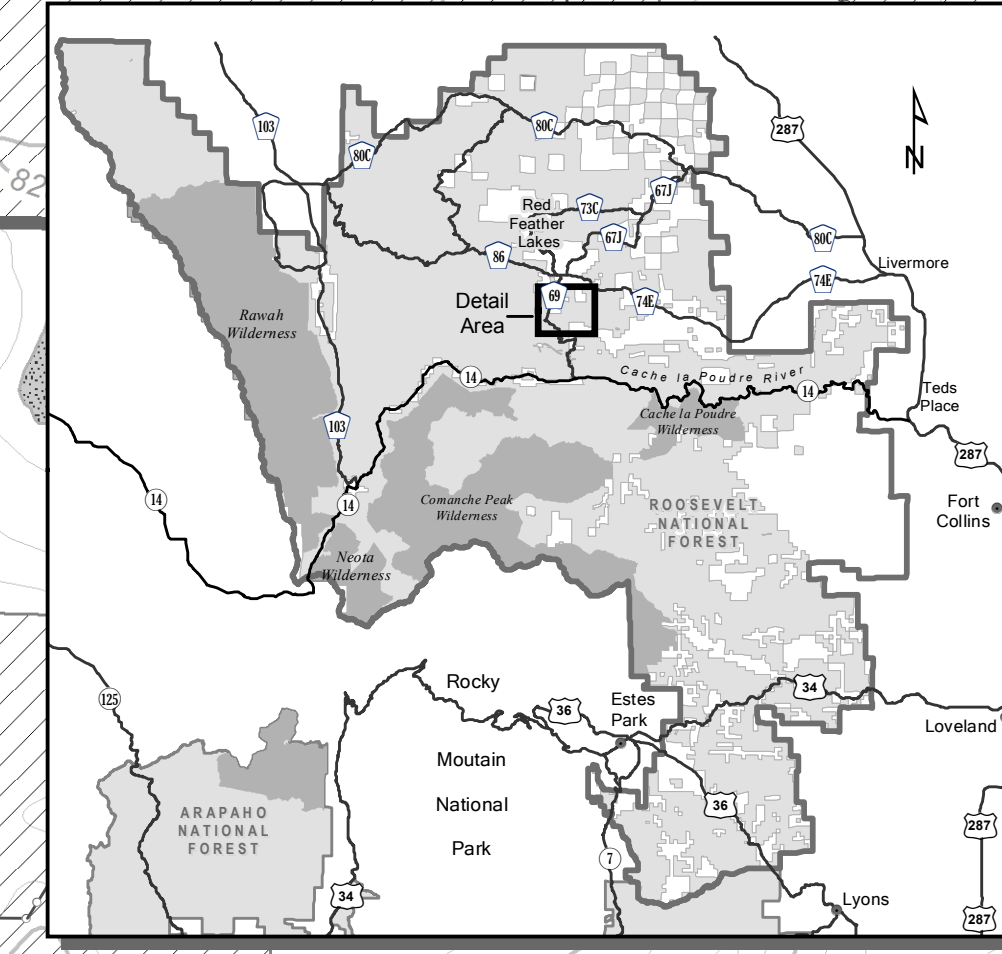
Table B - Treatment of Biomass

Units	Cutting Designation	Requirements
10E, 10F, 11A, 11B, 11C, 11H, 11L, 11Y, 13	Biomass trees; 2 feet tall to 4.9 inches DBH	*Bring to landing and pile.

Sawtimber and Non-Sawtimber - Appendix B, K-G-7#

Units	Type of Slash Disposal
10E, 10F, 11A, 11B, 11C, 11H, 11L, 11Y, 13	Landing Clean-up
10E, 10F, 11A, 11B, 11C, 11H, 11L, 11Y, 13	Limb and Top Removal
10E, 10F, 11A, 11B, 11C, 11H, 11L, 11Y, 13	A machine constructed fire line shall be constructed around each landing location
10E, 10F, 11A, 11B, 11C, 11H, 11L, 11Y, 13	Fall Leaners and Broken Tops
10E, 10F, 11A, 11B, 11C, 11H, 11L, 11Y, 13	Scatter

Unit	Cut Date	Acres	Lat	Long
10E	Aug-18	134.25	40° 45.990' N	105° 36.160' W
10F	Aug-18	206.45	40° 46.092' N	105° 35.220' W
11A	Apr-18	56.00	40° 44.973' N	105° 36.297' W
11B	Apr-18	35.73	40° 44.964' N	105° 35.799' W
11C	Jun-18	112.50	40° 45.261' N	105° 35.106' W
11H	Apr-18	39.89	40° 45.083' N	105° 35.019' W
11I	Mar-18	20.86	40° 45.114' N	105° 35.619' W
11L	Mar-18	12.34	40° 44.831' N	105° 35.406' W
11Y	Mar-18	10.29	40° 44.990' N	105° 35.532' W
13	Sep-18	27.69	40° 45.643' N	105° 34.820' W



Scale 1:7,920
1 inch = 660 feet

Landlines are approximate
Township/Range based on 6th PM Colorado
Contour Interval is 40 feet

